

# Efforts Till Excellence

AGS-TECH Inc.

Phone: +1-505-550-6501 and +1-505-565-5102

Fax: +1-505-814-5778

Email: [sales@agstech.net](mailto:sales@agstech.net)

Web: <http://www.agstech.net>







Robotic Metal Pouring Automation  
First time in India



International Casting award winner  
Best conversion 2015

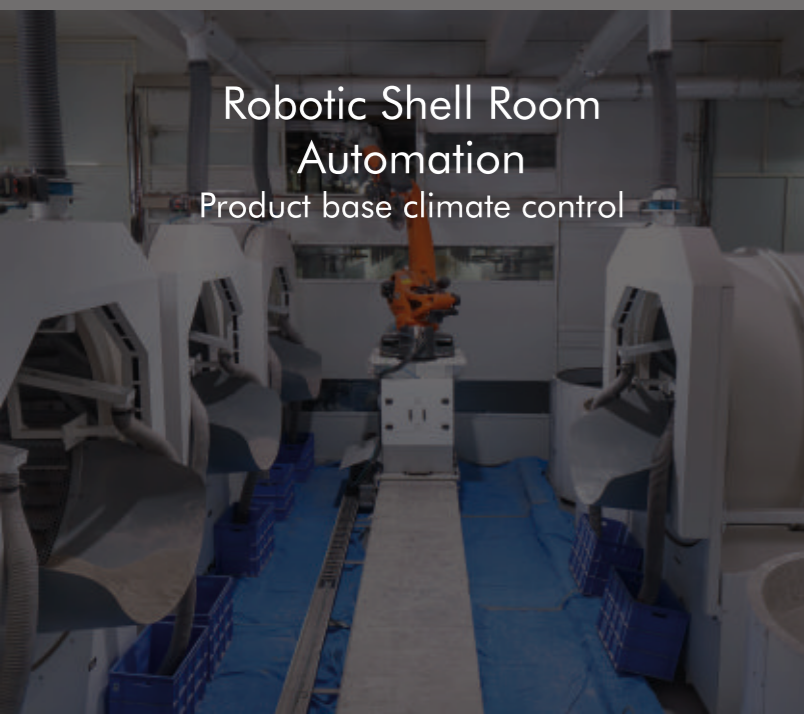
# Company



Unit 1 | 600 Metric Ton / Annum  
Handling small volume



Biggest Manufacturing Facility in India  
200000 Sq. Ft. Working Area



Robotic Shell Room Automation  
Product base climate control



Integration of Machine shop with Inspection system -  
Better Process Control



Unit 2 | 2400 Metric Ton / Annum  
Handling Medium to Large volume Inhouse Machining & Assembly







# Facilities & Process Control



Better Process Control  
is Always  
Better than Quality Control

COATING  
DE-WAXING  
SHELL BAKING  
METAL POURING  
WAX  
MACHINING  
STRAIGHTENING  
HEAT-TREATMENT  
ROLOVER FURNACE  
ALUMINIUM POURING





# Product



## Capabilities

- **Weight Range**  
From 0.05kg to 90kg as a single piece
- **Size**  
450mm x 450mm x 350mm
- **Dimensional Accuracy**  
According to ISO 8062, ISO 2768, VDG P690, IS11166.

- **Surface Finish**  
3 to 6 micron Ra
- **Materials Handled**  
Austenitic Stainless Steel, Carbon Steel, Low Alloy Steel, Super Alloy Steel, Martensitic Stainless Steel, Duplex steel, Precipitation Hardened Steel, Aluminium Alloy, Copper Alloy.



## Value Addition

- Special Heat Treatment
- Surface Treatment
- Assembly



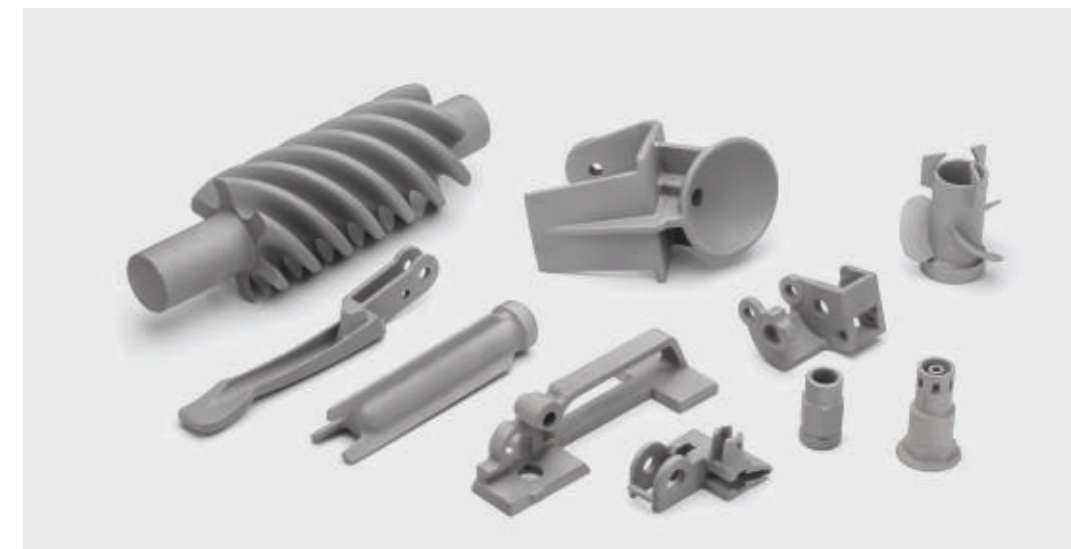
## Outsourcing

- Forging & Barstock:**
- Machining
  - Special Heat Treatment
  - Surface Treatment
  - Assembly

## Application

Automobile  
Earth Moving  
Valves  
Switch Gears  
Pumps  
Machine Tools

Food Processing  
Textile  
Power Plant  
Hardware Fittings  
Defense  
Surgical Implants





# Quality Control

## Measurement & Testing

### Casting

- Chemical Composition
- Mechanical Testing
- NDT
- Corrosion Test
- Microscopic Examination
- Borescope Inspection
- Surface Roughness
- Leak Test

### Machining

- CMM
- Contourcord
- Equator
- Surface Roughness

### Raw Material

- Sieve Analysis
- Radiation Measurement
- Loss on Ignition
- Wax Hardness
- Ash Content of Wax
- Drop Point
- Binder Gel Test
- % SiO<sub>2</sub> in Binder
- Chemical Analysis

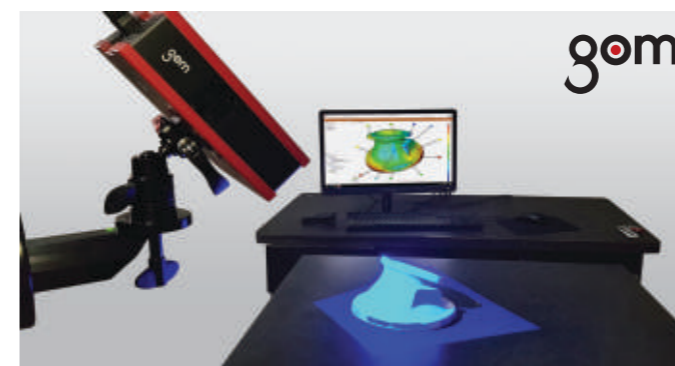
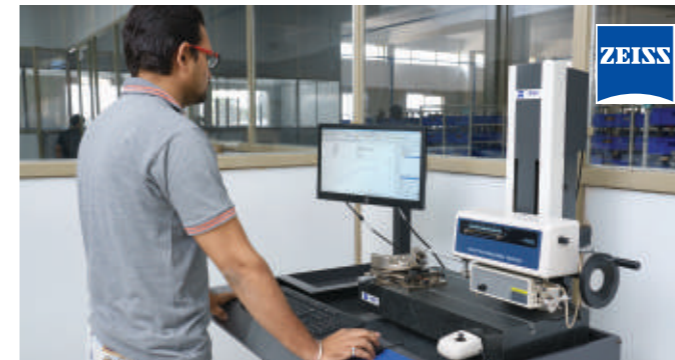
### In-Process Control At

- Wax:**
  - Drop melting point
  - Hardness
  - Ash Content
- Shelling:**
  - Viscosity
  - Slurry Gel Test
  - Sieve Analysis
  - Loss on Ignition
  - MOR
- Melting:**
  - Chemical Analysis
  - Gas Content (Density Index) for Al
  - Temperature of Melt
  - Temperature of Shell
- Machining:**
  - Dimensional Inspection
  - Custom Gauging & Inspection
  - Surface Roughness

### Certification

- IATF - 16949 : 2016
- EMS ISO - 14001 : 2015
- OH & SMS ISO - 45001 : 2018
- PED 2014/68/EU
- ISO 9001:2015

## Inspection



## Inspection



**Inspection Raw Material**







AGS-TECH Inc.

Phone: +1-505-550-6501 and +1-505-565-5102

Fax: +1-505-814-5778

Email: [sales@agstech.net](mailto:sales@agstech.net)

Web: <http://www.agstech.net>