



Company Profile



Founded in 2010, we Sinowon Innovation Metrology Manufacture Limited is National Authorized Hi-Tech Manufacturer (Certificate No.: GR201544000821), ISO9001:2015 Certified company, GuangDong Province Enterprise of Observing Contract and Valuing Credit, Shenzhen Qianhai Equity Trading Center(SEC Registration Number:666354).

So far as founded in 2010, Sinowon always consider customer as the starting point, manage corporation with motto "Satisfaction, Innovation, Norm, Obligation, Worth, Openness, Nimble". Constantly improve the management system, increase technology research and development, strengthen the company's ability to integrate production, dedicated to provide users with high-quality testing equipment and one-stop pre-sale, sale and after-sales service.

SINOWON is mainly produce, develop, integrate and sell measuring data software system, optical inspection instrument such as One Key Instant Vision Measuring System, Fully Auto Video Measuring System, Tool Microscope, Video Measuring Microscope and hardness tester such as Automatically Vickers Hardness Tester, Rockwell Hardness Tester, Brinell Hardness Tester, Micro Hardness Tester, Portable Ultrasonic Hardness Tester, Leeb Hardness Tester, etc and some other accessory products. And all of our products have passed The CE EU certification and widely used in metal, plastics, electronics, semiconductors, home appliances, telecommunications, automotive, aviation, aerospace and other industrial laboratories, production workshops, assembly line for quality control.

From the date of establishment, SINOWON is based on the Metrology industry, focused on customer and be a striver for committing to make measurement more accurate and uncomplicated and supply high cost-performance products and service for customers.

We warmly welcome you to visit our headquarter in Free Experience Center, and looking forward to further essence from you.

Sinowon is Committed to Make Measurement More Accurate and Uncomplicated!



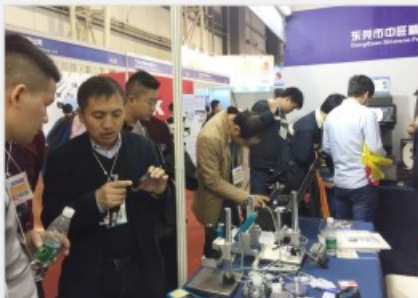
Intermach Metal Processing Machinery Fair



CCMT China CNC Machine Tool Fair



ASEAN International Machine Tool Fair



DMP Tooling and Machining Fair



SIMM Machinery Fair



Control Stuttgart Quality Control Fair

Part Exhibition

2.5D High Accuracy Manual Vision Measuring Machine

***iVision* Series**

Less Error

Within 2um

High Accuracy

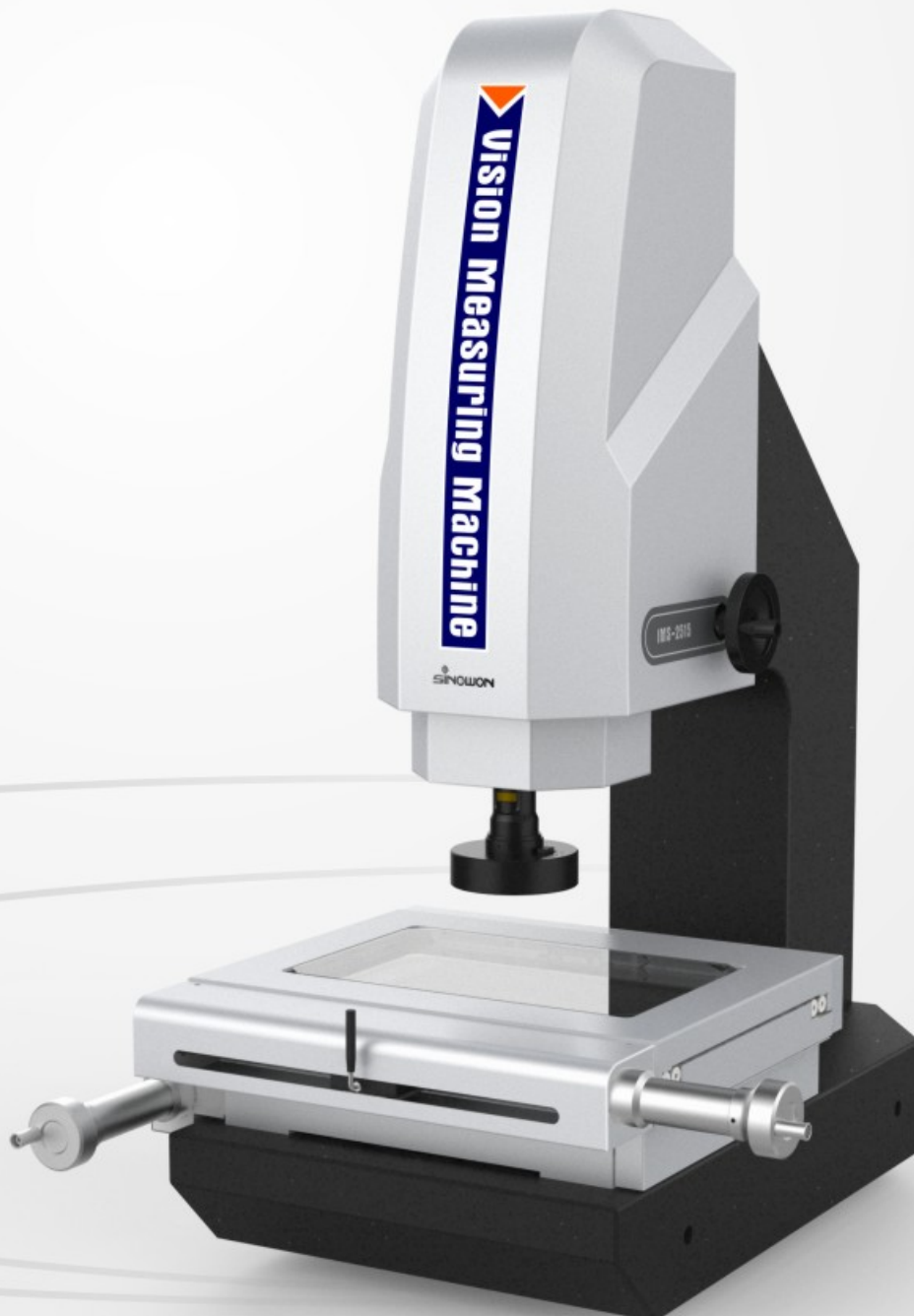
$\leq 3+L/200\mu\text{m}$

High Resolution

700TVL Color CCD

Measurement Software

iMeasuring 2.1



+ Characteristic

- High precision Jinan Qing marble base and pillar, to ensure high stability and accuracy;
- High precision light pole toothless and fast moving locking device, to ensure the error of return travel is within 2um;
- High accuracy A grade optical linear scale with precision working stage, to ensure the accuracy is within 2.5+L/200um;
- High definitive detented zoom lens and high resolution color digital camera, to ensure clear image without distortion;
- With programmable formula surface 4-ring 8-division LED Cold Illumination and contour LED parallel illumination and internal intelligent light adjustment, it can automatic control the brightness in the 4-ring 8-division;
- Powerful function iMeasuring2.1 measuring software highly enhance the quality control situation;
- Optional imported contact probe and 3D measuring software which can update it to 3D Measuring machine;
- Optional FexQMS Measuring Data Analysis and Real-time monitoring software which enhance program control and reduce material consumption.

■ Partial Display



+ Specifications

Mode	iMS-2010	iMS-2515	iMS-3020	iMS-4030	iMS-5040
Code#	521-140	521-150	521-160	521-170	521-180
Metal Table	408x308mm	408x308mm	458x358mm	608x470mm	708x470mm
Glass Table	306x198mm	306x198mm	356x248mm	456x348mm	556x348mm
X/Y-axis Travel	200x100mm	250x150mm	300x200mm	400x300mm	500x400mm
Dimension(WxDxH)	790x617x1000mm	790x617x1000mm	838x667x1000mm	1002x817x1043mm	1002x867x1043mm
Net Weight	175Kg	175Kg	185Kg	350Kg	380Kg
Z-axis Travel	High-precision linear guide , working travel 200mm				
X/Y/Z-axis Travel	0.0005mm				
X/Y-axis Accuracy*	≤2.5+L/200(um)				
Repeatability	2um				
Base and Pillar	High Accuracy Jinan Qing Marble				
Illumination System (Software Adjustment)	Surface: Stepless Adjustable 4-ring 8-division LED Cold Illumination				
	Contour: LED Parallel Illumination				
	LED Laser Navigation Lights				
CCD	High Resolution 700TV Color CCD Camera				
Zoom lens**	6.5X High Resolution Detented Zoom Lens				
	Magnification : 0.7X~4.5X : Video Magnification : 26X~172X				
Working Environment	Temperature:20°C±2°C, change range < 2°C/hr				
	Humidity:30~80%				
	Vibration<0.002g, <15Hz				
Measuring Software	iMeasuring 2.1				
Operation System	Support XP, WIN7, WIN8.1, WIN10,32/64 operating system				
Language	English, Simplified Chinese, Traditional Chinese, other language versions can be added				

* L is measuring length, unit is mm, the mechanical accuracy of Z-axis and focus accuracy is greatly related to the surface of the workpiece.
 **Magnification is approximate value, it is related to the dimension of monitor and resolution.
 Customers can choose 0.5X or 2X optional objective, and realize image magnification: 13X~86X or 52X~344X.

High Accuracy Semiautomatic Vision Measuring Machine

iFocus Series

Less Error

Within 2um

High Accuracy

$\leq 3+L/200\mu\text{m}$

High Stability

Auto Focus

High Resolution

700TVL Color CCD

Measurement Software

iMeasuring 2.2



+ Characteristic

- High precision Jinan Qing marble base and pillar, to ensure high stability and accuracy;
- High precision toothless rod and fast moving locking device, to ensure hysteresis error is within 2um;
- High accuracy A grade optical linear scale with precision working stage, to ensure the accuracy is within 2.5+L/200um;
- High definitive detented zoom lens and high resolution color digital camera, to ensure clear image without distortion;
- With programmable surface 4-ring 8-division LED Cold Illumination and contour LED parallel illumination and internal intelligent light adjustment, it can automatic control the brightness in the 4-ring 8-division;
- Z-axis equipped with high accuracy linear guide and servo motor control system, realize auto focus measurement, and eliminate the human focus error, enhance measurement accuracy and stability;
- Powerful function iMeasuring2.2 Measuring Software, highly enhance the quality control;
- Optional FexQMS Measuring Data Analysis and Real-time monitoring software which enhance program control and reduce material consumption.

Motorized Focus



Auto Focus



+ Specifications

Mode	iMS-2010F	iMS-2515F	iMS-3020F	iMS-4030F	iMS-5040F
Code#	521-140F	521-150F	521-160F	521-170F	521-180F
Metal Table	408x308mm	408x308mm	458x358mm	608x470mm	708x470mm
Glass Table	306x198mm	306x198mm	356x248mm	456x348mm	556x348mm
X/Y-axis Travel	200x100mm	250x150mm	300x200mm	400x300mm	500x400mm
Dimension(WxDxH)	790x617x1000mm	790x617x1000mm	838x667x1000mm	1002x817x1043mm	1002x867x1043mm
Net Weight	175Kg	175Kg	185Kg	350Kg	380Kg
Z-axis Travel	High-precision linear guide , working travel 200mm				
X/Y/Z-axis Travel	0.0005mm				
X/Y-axis Accuracy*	≤2.5+L/200(um)				
Repeatability	2um				
Base and Pillar	High Accuracy Jinan Qing Marble				
Illumination System (Software Adjustment)	Surface: Stepless Adjustable 4-ring 8-division LED Cold Illumination				
	Contour: LED Parallel Illumination				
	LED Laser Navigation Lights				
CCD	High Resolution 700TV Color CCD Camera				
Zoom lens**	6.5X High Resolution Detented Zoom Lens				
	Magnification : 0.7X~4.5X;Video Magnification : 26X~172X				
Working Environment	Temperature:20°C±2°C, change range < 2°C/hr				
	Humidity:30~80%				
	Vibration<0.002g , <15Hz				
Measuring Software	iMeasuring 2.2				
Operation System	Support XP , WIN7 , WIN8.1 , WIN10 , 32/64 operating system				
Language	English, Simplified Chinese, Traditional Chinese, other language versions can be added				

* L is measuring length, unit is mm, the mechanical accuracy of Z-axis and focus accuracy is greatly related to the surface of the workpiece.

**Magnification is approximate value, it is related to the dimension of monitor and resolution.

Customers can choose 0.5X or 2X optional objective, and realize image magnification: 13X~86X or 52X~344X.

3D High Accuracy Manual Vision Measuring Machine

***iTouch* Series**

Less Error

Within 2um

High Accuracy

$\leq 3+L/200\mu\text{m}$

Measurement

Imported
Touch Probe

High Resolution

700TVL Color CCD

**Measurement
Software**

iMeasuring 3.1



+ Characteristic

- High precision Jinan Qing marble base and pillar, to ensure high stability and accuracy;
- High precision toothless rod and fast moving locking device, to ensure hysteresis error is within 2um;
- High accuracy A grade optical linear scale with precision working stage, to ensure the accuracy is within $2.5+L/200\mu\text{m}$;
- High definitive detented zoom lens and high resolution color digital camera, to ensure clear image without distortion;
- With programmable surface 4-ring 8-division LED Cold Illumination and contour LED parallel illumination and built-in intelligent light adjustment, it can automatic control the brightness in the 4-ring 8-division;
- Imported contact probe and powerful function iMeasuring3.1 3D Measuring Software, highly enhance the quality control;
- Optional FexQMS Measuring Data Analysis and Real-time monitoring software which enhance program control and reduce material consumption.

■ Touch Probe



+ Specifications

Mode	iMS-2010P	iMS-2515P	iMS-3020P	iMS-4030P	iMS-5040P
Code#	521-140P	521-150P	521-160P	521-170P	521-180P
Metal Table	408x308mm	408x308mm	458x358mm	608x470mm	708x470mm
Glass Table	306x198mm	306x198mm	356x248mm	456x348mm	556x348mm
X/Y-axis Travel	200x100mm	250x150mm	300x200mm	400x300mm	500x400mm
Dimension(WxDxH)	790x617x1000mm	790x617x1000mm	838x667x1000mm	1002x817x1043mm	1002x867x1043mm
Net Weight	175Kg	175Kg	185Kg	350Kg	380Kg
Z-axis Travel	High-precision linear guide , working travel 200mm				
X/Y/Z-axis Travel	0.0005mm				
X/Y-axis Accuracy*	$\leq 2.5+L/200(\mu\text{m})$				
Repeatability	2um				
Base and Pillar	High Accuracy Jinan Qing Marble				
Illumination System (Software Adjustment)	Surface: Stepless Adjustable 4-ring 8-division LED Cold Illumination				
	Contour: LED Parallel Illumination				
	LED Laser Navigation Lights				
CCD	High Resolution 700TV Color CCD Camera				
Zoom lens**	6.5X High Resolution Detented Zoom Lens				
	Magnification : 0.7X~4.5X ; Video Magnification : 26X~172X				
Working Environment	Temperature: $20^{\circ}\text{C} \pm 2^{\circ}\text{C}$, change range $< 2^{\circ}\text{C}/\text{hr}$				
	Humidity: 30~80%				
	Vibration $< 0.002\text{g}$, $< 15\text{Hz}$				
Measuring Software	iMeasuring 3.1				
Operation System	Support XP , WIN7 , WIN8.1 , WIN10 , 32/64 operating system				
Language	English, Simplified Chinese, Traditional Chinese, other language versions can be added				

* L is measuring length, unit is mm, the mechanical accuracy of Z-axis and focus accuracy is greatly related to the surface of the workpiece.

**Magnification is approximate value, it is related to the dimension of monitor and resolution.

Customers can choose 0.5X or 2X optional objective, and realize image magnification: 13X~86X or 52X~344X.

2.5D Auto Vision Measuring Machine

MVS Series



Three-axis Motorized



Click Zoom Lens



Auto Focus



Auto Light



Auto Measurement



+ Introduction

MVS is an economic Fully Auto Vision Measuring Machine for basic measurement, three-axis motorized control, with click zoom lens, accurate manual zoom, high configuration, to meet with different application. It is widely used in Metal mold, electronic industry, medical equipment and flat panel display industry, as well as research institutes, colleges and universities, metrology institutions and dimension inspection on production line.

+ Characteristic

- High precision X/Y/Z-axis CNC fully auto control, high position accuracy;
- Marble base and pillar, stable and reliable;
- Precision linear guide, grinding ball screw and AC servo motor, ensure accuracy stability of system position;
- 0.5um high precision linear scale, ensure position and measurement accuracy;
- Imported high definition color industry digital camera, ensure clear observation and stable measurement requirement;
- 6.5X click zoom lens, precision manual zoom, only need to make pixel calibration once time;
- Programmable 5-ring 8-division LED surface illumination, contour parallel LED illumination, can realize 256 grade brightness adjustment intelligently;
- With proprietary powerful function fully auto measuring software iMeasuring 4.1;
- Can set auto measurement, and finish batch measurement with high efficient;
- Laser, probe, coaxial illumination and other parts are optional;
- Optional FexQMS Measuring Data Analysis and Real-time monitoring software which enhance program control and reduce material consumption.

+ Specifications

Product Name		2.5D Auto Vision Measuring Machine					
Model		MVS-3020			MVS-4030		
Code#		523-360			523-370		
X/Y-axis Travel		300x200mm			400x300mm		
Load Capacity		25Kg			25Kg		
Dimension		1132x720x1665mm			1280x840x1688mm		
Packing Dimension		1290x970x1920mm			1390x1060x1940mm		
Weight		380Kg			450Kg		
Z-axis Travel		200mm					
X/Y/Z 3-axis Linear Scale		High precision linear scale , resolution : 0.0005mm					
Guidance Mode		Precision linear guide, double-track double slider guide					
Operation Mode		Joystick controller, Mouse operation, automatic detection program					
Measurement Accuracy*		XY-axis : $\leq 2.2 + L/200(\mu\text{m})$ Z-axis : $\leq 5 + L/200(\mu\text{m})$					
Repeatability		$\pm 2\mu\text{m}$					
Video System**		High definition 1/3" Color CCD Camera 6.5X continue click zoom lens; optical magnification: 0.7X-4.5X; video magnification:26X~172X(21.5" monitor)					
Field of View(mm) (Diagonal* Horizontal*Vertical)	Lens Magnification	0.7X	1X	2.0X	3.0X	4X	4.5X
	1/3" CCD	8.57x6.86x5.14	6.00x4.80x3.60	3.00x2.40x1.80	2.00x1.60x1.20	1.50x1.20x0.90	1.33x1.07x0.80
Illumination	Contour	LED Parallel Contour Illumination					
	Surface	5-ring 8-division 0~255 grade continue adjustable					
Software System		iMeasuring 4.1 Fully Auto Measuring Software					
Working Environment		Temperature 20°C \pm 2°C, Humidity Range <2°C/hr, Humidity 30~80%, Vibration <0.002g, <15Hz					
Power		220V/50Hz/10A					

* L is measuring length, unit is mm, the mechanical accuracy of Z-axis and focus accuracy is greatly related to the surface of the workpiece.

**Magnification is approximate value, it is related to the dimension of monitor and resolution.

Customers can choose 0.5X or 2X optional objective, and realize image magnification: 13X~86X or 52X~344X.

3D Fully Auto Vision Measuring Machine

MVA Series



Four-axis Motorized



Auto Zoom



Auto Focus



Auto Light



Auto Measurement



MCP Probe



+ Introduction

MVA is a classical Fully Auto Vision Measuring Machine, it is equipped with four-axis motorized control and auto zoom lens and probe, powerful function, simple operation, widely application.

+ Characteristic

- Four-axis CNC fully auto close loop control, auto measurement;
- Marble base and pillar, stable and reliable;
- Precision linear guide, grinding ball screw and AC servo motor, ensure accuracy stability of system position;
- High precision linear scale, resolution is 0.5um, high accuracy, great stability;
- Imported high definition color industry digital camera, ensure clear observation and stable measurement requirement;
- 6.5X continue auto zoom lens, precision auto zoom, only need to make pixel calibration once time;
- Programmable 5-ring 8-division LED surface illumination, contour parallel LED illumination, can realize 256 grade brightness adjustment intelligently;
- With proprietary powerful function fully auto measuring software iMeasuring 4.2;
- With imported touch probe, realize 3D measurement;
- Can set auto measurement, and finish batch measurement with high efficient;
- Laser, coaxial illumination and other parts are optional;
- Optional FexQMS Measuring Data Analysis and Real-time monitoring software which enhance program control and reduce material consumption.

+ Specifications

Product Name		3D Fully Auto Vision Measuring Machine					
Model		MVA-3020P			MVA-4030P		
Code#		524-360			524-370		
X/Y-axis Travel		300x200mm			400x300mm		
Load Capacity		25Kg			25Kg		
Dimension		1132x720x1665mm			1280x840x1688mm		
Packing Dimension		1290x970x1920mm			1390x1060x1940mm		
Weight		380Kg			450Kg		
Z-axis Travel		200mm					
X/Y/Z 3-axis Linear Scale		High precision linear scale , resolution : 0.0005mm					
Guidance Mode		Precision linear guide, double-track double slider guide					
Operation Mode		Joystick controller, Mouse operation, automatic detection program					
Measurement Accuracy*		XY-axis : $\leq 2.2 + L/200(\mu\text{m})$ Z-axis : $\leq 5 + L/200(\mu\text{m})$					
Repeatability		$\pm 2\mu\text{m}$					
Video System**		High definition 1/3" Color CCD Camera 6.5X continue click zoom lens; optical magnification: 0.7X-4.5X; video magnification:26X~172X(21.5" monitor)					
Field of View(mm) (Diagonal*Horizontal*Vertical)	Lens Magnification	0.7X	1X	2.0X	3.0X	4X	4.5X
	1/3"CCD	8.57x6.86x5.14	6.00x4.80x3.60	3.00x2.40x1.80	2.00x1.60x1.20	1.50x1.20x0.90	1.33x1.07x0.80
Illumination	Contour	LED Parallel Contour Illumination					
	Surface	5-ring 8-division 0~255 grade continue adjustable					
Software System		iMeasuring 4.2 Fully Auto Measuring Software					
Working Environment		Temperature 20°C \pm 2°C, Humidity Range <2°C/hr, Humidity 30~80%, Vibration <0.002g, <15Hz					
Power		220V/50Hz/10A					

* L is measuring length, unit is mm, the mechanical accuracy of Z-axis and focus accuracy is greatly related to the surface of the workpiece.

**Magnification is approximate value, it is related to the dimension of monitor and resolution.

Customers can choose 0.5X or 2X optional objective, and realize image magnification: 13X~86X or 52X~344X.

2.5D Laser-Scanning Auto Vision Measuring Machine

MVL Series



Four-axis Motorized



Auto Zoom



Auto Focus



Auto Light



Auto Measurement



MCP Probe



+ Introduction

MVL is a Fully Auto Vision Measuring Machine for vision measurement with laser scanning function, it has four-axis auto motorized control, the standard coaxial motorized detent zoom lens and laser scanning probe is able to meet with different applications. It is widely used in Metal mold, electronic industry, medical equipment and flat panel display industry, as well as 3C research institutes, colleges and universities, metrology institutions and dimension inspection on production line.

+ Characteristic

- High precision X/Y/Z/Q-axis fully auto control, high position accuracy;
- Precision linear guide, grinding ball screw and AC servo motor, ensure accuracy the stability of system position;
- 0.5um high resolution linear scales ensure the precision of position and measurement accurately;
- 6.5X standard coaxial motorized detent zoom lens and high definition color digital camera, ensure sharp observation and stable measurement requirement;
- Programmable 5-ring 8-division LED surface illumination, contour parallel LED illumination, can realize 256 grade brightness adjustment intelligently;
- Laser scanning probe is as standard delivery special for the measurement of transparent glass, etc;
- High-powerful auto measuring software iMeasuring 4.3.

+ Specifications

Product Name		2.5D Laser Scanning Auto Vision Measuring Machine					
Model		MVL-3020			MVL-4030		
Code#		526-360			526-370		
X/Y-axis Travel		300x200mm			400x300mm		
Load Capacity		25Kg			25Kg		
Dimension		1132x720x1665mm			1290x970x1920mm		
Packing Dimension		1280x840x1688mm			1390x1060x1940mm		
Weight		380Kg			450Kg		
Z-axis Travel		200mm					
X/Y/Z 3-axis Linear Scale		USA High precision linear scale · Resolution : 0.0005mm					
Movement Structure		Precision linear guide · double-track double slider guide					
Operation Mode		Joystick controller, Mouse operation, automatic detection program					
Measurement Accuracy*		XY-axis : $\leq 2.2+L/200(\mu\text{m})$ Z-axis : $\leq 5+L/200(\mu\text{m})$					
Repeatability		$\pm 2\mu\text{m}$					
Video System**		High definition 1/3" Color CCD Camera 6.5X continue click zoom lens; optical magnification: 0.7X-4.5X; video magnification:26X~172X(21.5" monitor)					
Field of View(mm) (Diagonal* Horizontal*Vertical)	Lens Magnification	0.7X	1X	2.0X	3.0X	4X	4.5X
	1/3" CCD	8.57x6.86x5.14	6.00x4.80x3.60	3.00x2.40x1.80	2.00x1.60x1.20	1.50x1.20x0.90	1.33x1.07x0.80
Illumination	Contour	LED Parallel Contour Illumination					
	Surface	5-ring 8-division 0~255 grade continue adjustable					
Software System		iMeasuring 4.3 Fully Auto Measuring Software					
Working Environment		Temperature 20°C \pm 2°C, Humidity Range <2°C/hr, Humidity 30~80%, Vibration <0.002g, <15Hz					
Power		220V/50Hz/10A					

* L is measuring length, unit is mm, the mechanical accuracy of Z-axis and focus accuracy is greatly related to the surface of the workpiece.

**Magnification is approximate value, it is related to the dimension of monitor and resolution.

Customers can choose 0.5X or 2X optional objective, and realize image magnification: 13X~86X or 52X~344X.

2.5D Fully Auto Vision Measuring Machine

AutoVision Series



Auto Position



Auto Focus



Auto Zoom



Auto Light



Auto Measurement



+ Introduction

AutoVision is a Gantry Fully Auto Vision Measuring Machine, it is designed for high accuracy and large dimension measurement. Equipped with movable bridge structure, the workpiece is fixed, which can ensure measurement accuracy and stability. It is widely used in electronic industry, medical devices, LCD, aerospace and other industries measurement.

+ Characteristic

- Moving gantry structure, the workpiece is fixed;
- Four-axis CNC fully auto close loop control, auto measurement;
- Marble base and pillar, stable and reliable;
- Imported open type linear scale, resolution is 0.1um, high accuracy, great stability;
- Imported H grade linear guide, precision grinding ball screw and AC servo motor, ensure accuracy stability of system position;
- Imported high definition color industry camera, ensure clear observation and stable measurement requirement;
- 6.5X continue auto zoom lens, precision auto zoom, only need to make pixel calibration once time;
- Programmable 5-ring 8-division LED surface illumination, contour parallel LED illumination, can realize 256 grade brightness adjustment intelligently;
- With proprietary fully auto measuring software iMeasuring 4.1, powerful function, simple operation;
- Optional touch probe and laser probe, it can also be customized according to customer request;
- Optional FexQMS Measuring Data Analysis and Real-time monitoring software which enhance program control and reduce material consumption.

+ Specifications

Product Name		2.5D Fully Auto Vision Measuring Machine					
Model		AutoVision 432	AutoVision 542	AutoVision 652	AutoVision 862		
Code#		520-121	520-131	520-141	520-151		
X/Y-axis Travel		400x300mm	500x400mm	600x500mm	800x600mm		
Load Capacity		30Kg	30Kg	30Kg	30Kg		
Dimension		1160x800x1650mm	1450x950x1650mm	1600x1050x1650mm	2000x1200x1650mm		
Packing Dimension		1380x1170x1910mm	1690x1300x2000mm	1800x1400x2000mm	2300x1700x2000mm		
Weight		650Kg	780Kg	1380Kg	2000Kg		
Z-axis Travel		200mm					
X/Y/Z 3-axis Linear Scale		Imported Open Linear Scale, resolution : 0.0001mm					
Guidance Mode		Imported H grade Linear Guide, Double-Track Double Slider Guide					
Operation Mode		Joystick controller, Mouse operation, automatic detection program					
Measurement Accuracy*		XY-axis : $\leq 1.8+L/200(\mu\text{m})$ Z-axis : $\leq 5+L/200(\mu\text{m})$					
Repeatability		$\pm 2\mu\text{m}$					
Video System**		$\frac{1}{2}$ " Color CCD Camera 6.5X Automatic Zoom Lens; Optical Magnification: 0.7X~4.5X, Video Magnification: 20X~129X(21.5" monitor)					
Field of View(mm)	Lens Magnification	0.7X	1X	2.0X	3.0X	4X	4.5X
(Diagonal * Horizontal * Vertical)	1/2" CCD	11.43x9.14x6.86	8.00x6.40x4.80	4.00x3.20x2.40	2.67x2.13x1.60	2.00x1.60x1.20	1.78x1.42x1.07
Illumination	Contour	LED Parallel Contour Illumination					
	Surface	5-ring 8-division 0~255 grade continue adjustable					
Software System		iMeasuring 4.1 Fully Auto Measuring Software					
Working Environment		Temperature 20°C \pm 2°C, Humidity Range <2°C/hr, Humidity 30~80%, Vibration <0.002g, <15Hz					
Power		220V/50Hz/10A					

* L is measuring length, unit is mm, the mechanical accuracy of Z-axis and focus accuracy is greatly related to the surface of the workpiece.

**Magnification is approximate value, it is related to the dimension of monitor and resolution.

Customers can choose 0.5X or 2X optional objective, and realize image magnification: 10X~64.5X or 40X~258X.

3D High Accuracy Fully Auto Vision Measuring Machine

AutoTouch Series



Auto Position



Auto Zoom



Auto Focus



Auto Light



Auto Measurement



MCP Probe

+ Introduction

AutoTouch is equipped with Touch Probe to realize 3D Measurement. Four-axis is motorized control and measurement, it is very easy to operate and can meet with widely application for precision industry measurement.

+ Characteristic

- Moving gantry structure, measurement workpiece is fixed;
- Four-axis CNC fully auto close loop control, auto measurement;
- Marble base and pillar, stable and reliable;
- Imported open type linear scale, resolution is 0.1um, high accuracy, great stability;
- Imported P grade linear guide, precision grinding ball screw and AC servo motor, ensure accuracy stability of system position;
- Imported high definition color industry camera, ensure clear observation and stable measurement requirement;
- 6.5X continue auto zoom lens, precision auto zoom, only need to make pixel calibration once time;
- Programmable 5-ring 8-division LED surface illumination, contour parallel LED illumination, can realize 256 grade brightness adjustment intelligently;
- Equipped with imported touch probe, realize 3D measurement;
- With proprietary fully auto measuring software iMeasuring 4.2, powerful function, simple operation;
- Optional laser probe, it can also be customized according to customer request;
- Optional FexQMS Measuring Data Analysis and Real-time monitoring software which enhance program control and reduce material consumption.

■ Partial Display



+ Specifications

Product Name		3D High Accuracy Fully Auto Vision Measuring Machine					
		AutoTouch 432	AutoTouch 542	AutoTouch 652	AutoTouch 862		
Model		AutoTouch 432	AutoTouch 542	AutoTouch 652	AutoTouch 862		
Code#		521-121	521-131	521-141	521-151		
X/Y-axis Travel		400x300mm	500x400mm	600x500mm	800x600mm		
Load Capacity		30Kg	30Kg	30Kg	30Kg		
Dimension		1160x800x1650mm	1450x950x1650mm	1600x1050x1650mm	2000x1200x1650mm		
Packing Dimension		1380x1170x1910mm	1690x1300x2000mm	1800x1400x2000mm	2300x1700x2000mm		
Weight		650Kg	780Kg	1380Kg	2000Kg		
Z-axis Travel		200mm					
X/Y/Z 3-axis Linear Scale		Imported Open Linear Scale, resolution:0.0001mm					
Guidance Mode		Imported P grade Linear Guide,Double-Track Double Slider Guide					
Operation Mode		Joystick controller, Mouse operation, automatic detection program					
Measurement Accuracy*		XY-axis : $\leq 1.8+L/200(\mu\text{m})$ Z-axis : $\leq 5+L/200(\mu\text{m})$					
Repeatability		$\pm 2\mu\text{m}$					
Video System**		High definition 1/2" Color CCD Camera,Image navigation system 6.5X Automatic Zoom Lens; Optical Magnification: 0.7X~4.5X,Video Magnification: 20X~129X(21.5" monitor)					
Field of View(mm)	Lens Magnification	0.7X	1X	2.0X	3.0X	4X	4.5X
(Diagonal* Horizontal*Vertical)	1/2" CCD	11.43x9.14x6.86	8.00x6.40x4.80	4.00x3.20x2.40	2.67x2.13x1.60	2.00x1.60x1.20	1.78x1.42x1.07
Illumination	Contour	LED Parallel Contour Illumination					
	Surface	5-ring 8-division 0~255 grade continue adjustable					
Software System		iMeasuring 4.2 Fully Auto Measuring Software					
Working Environment		Temperature 20°C \pm 2°C, Humidity Range <2°C/hr, Humidity 30~80%, Vibration <0.002g, <15Hz					
Power		220V/50Hz/10A					

* L is measuring length, unit is mm, the mechanical accuracy of Z-axis and focus accuracy is greatly related to the surface of the workpiece.

**Magnification is approximate value, it is related to the dimension of monitor and resolution.

Customers can choose 0.5X or 2X optional objective, and realize image magnification: 10X~64.5X or 40X~258X.

Auto Laser Scan Vision Measuring Machine

AutoScan Series



Auto Position



Auto Zoom



Auto Focus



Auto Light



Auto Measurement



Laser Measurement

+ Introduction

AutoScan is equipped with non-contact laser sensor to realize 3D measurement. It is widely used in non-contact measurement, and able to realize thickness, flatness and scan measurement.

+ Characteristic

- Moving gantry structure, measurement workpiece is fixed;
- Four-axis CNC fully auto close loop control, auto measurement;
- Marble base and pillar, stable and reliable;
- Imported open type linear scale, resolution is 0.1um, high accuracy, great stability;
- Imported P grade linear guide,, precision grinding ball screw and AC servo motor, ensure accuracy stability of system position;
- Imported high definition color industry camera, ensure clear observation and stable measurement requirement;
- 6.5X continue auto zoom lens, precision auto zoom, only need to make pixel calibration once time;
- Programmable 5-ring 8-division LED surface illumination, contour parallel LED illumination, can realize 256 grade brightness adjustment intelligently;
- With imported non-contact laser sensor, realize thickness and flatness and other measurement;
- With proprietary fully auto measuring software iMeasuring 5.0, powerful function, simple operation;
- Optional touch probe, coaxial illumination and other accessory, it can also be customized according to customer request;
- Optional FexQMS Measuring Data Analysis and Real-time monitoring software which enhance program control and reduce material consumption.

Partial Display



+ Specifications

Product Name		Auto Laser Scan Vision Measuring Machine					
		AutoScan 432	AutoScan 542	AutoScan 652	AutoScan 862		
Model		AutoScan 432	AutoScan 542	AutoScan 652	AutoScan 862		
Code#		522-121	522-131	522-141	522-151		
X/Y-axis Travel		400x300mm	500x400mm	600x500mm	800x600mm		
Load Capacity		30Kg	30Kg	30Kg	30Kg		
Dimension		1160x800x1650mm	1450x950x1650mm	1600x1050x1650mm	2000x1200x1650mm		
Packing Dimension		1380x1170x1910mm	1690x1300x2000mm	1800x1400x2000mm	2300x1700x2000mm		
Weight		650Kg	780Kg	1380Kg	2000Kg		
Z-axis Travel		200mm					
X/Y/Z 3-axis Linear Scale		Imported Open Linear Scale, resolution:0.0001mm					
Guidance Mode		Imported P grade Linear Guide,Double-Track Double Slider Guide					
Operation Mode		Joystick controller, Mouse operation, automatic detection program					
Measurement Accuracy*		XY-axis : $\leq 1.8+L/200(\mu\text{m})$ Z-axis : $\leq 5+L/200(\mu\text{m})$					
Repeatability		$\pm 2\mu\text{m}$					
Video System**		High definition 1/2" Color CCD Camera 6.5X Automatic Zoom Lens; Optical Magnification: 0.7X~4.5X,Video Magnification: 20X~129X(21.5" monitor)					
Field of View(mm)	Lens Magnification	0.7X	1X	2.0X	3.0X	4X	4.5X
(Diagonal * Horizontal*Vertical)	1/2" CCD	11.43x9.14x6.86	8.00x6.40x4.80	4.00x3.20x2.40	2.67x2.13x1.60	2.00x1.60x1.20	1.78x1.42x1.07
Illumination	Contour	LED Parallel Contour Illumination					
	Surface	5-ring 8-division 0~255 grade continue adjustable					
Software System		iMeasuring 5.0 Fully Auto Measuring Software					
Working Environment		Temperature $20^{\circ}\text{C} \pm 2^{\circ}\text{C}$, Humidity Range $< 2^{\circ}\text{C/hr}$, Humidity 30~80%, Vibration $< 0.002\text{g}$, $< 15\text{Hz}$					
Power		220V/50Hz/10A					

* L is measuring length, unit is mm, the mechanical accuracy of Z-axis and focus accuracy is greatly related to the surface of the workpiece.

**Magnification is approximate value, it is related to the dimension of monitor and resolution.

Customers can choose 0.5X or 2X optional objective, and realize image magnification: 10X~64.5X or 40X~258X.

Super Large Travel Automatic Vision Measuring Machine

MaxVision Series



Auto Position



Auto Zoom



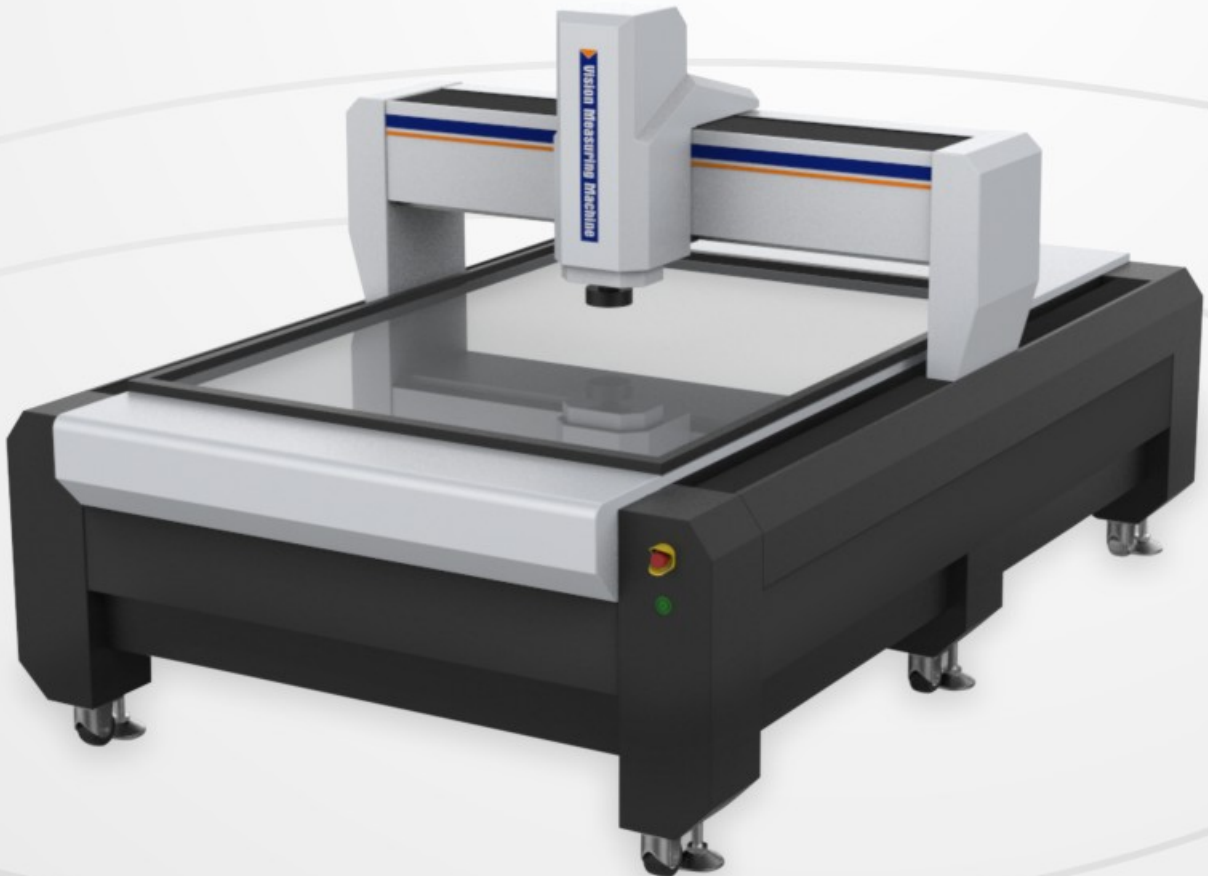
Auto Focus



Auto Light



Auto Measurement



+ Characteristic

- Moving gantry structure, measurement workpiece is fixed;
- Four-axis CNC fully auto close loop control, auto measurement;
- "00" grade "JINANQING" marble base and pillar, stable and reliable;
- Imported open type linear scale, resolution is 0.0001mm, high accuracy, great stability;
- Imported P grade linear guide, precision grinding ball screw and AC servo motor, ensure accuracy stability of system position;
- Imported high definition color industry camera, ensure clear observation and stable measurement requirement;
- 6.5X continue auto zoom lens, precision auto zoom, only need to make pixel calibration once time;
- Programmable 5-ring 8-division LED surface illumination, contour parallel LED illumination, can realize 256 grade brightness adjustment intelligently;
- With proprietary fully auto measuring software iMeasuring 4.1, powerful function, simple operation;
- Optional laser probe, it can also be customized according to customer request;
- Optional FexQMS Measuring Data Analysis and Real-time monitoring software which enhance program control and reduce material consumption.

Partial Display



+ Specifications

Product Name		Super Large Travel Automatic Vision Measuring Machine					
Model		MaxVision 1008	MaxVision 1210	MaxVision 1512	MaxVision 1712		
Code#		526-210	526-220	526-230	526-240		
X/Y-axis Travel		1000x800mm	1200x1000mm	1500x1200mm	1700x1200mm		
Load Capacity		50Kg					
Z-axis Travel		200mm					
X/Y/Z 3-axis Linear Scale		Imported Open Linear Scale, Resolution : 0.0001mm					
Guidance Mode		Imported P grade linear guide					
Operation Mode		Joystick controller, Mouse operation, automatic detection program					
Measurement Accuracy*		XY-axis : $\leq 4+L/200(\mu\text{m})$ Z-axis : $\leq 5+L/200(\mu\text{m})$					
Repeatability		5 μm					
Video System**		High definition 1/2" Color CCD Camera 6.5X Automatic Zoom Lens; Optical Magnification: 0.7X~4.5X, Video Magnification: 20X~129X(21.5" monitor)					
Field of View(mm)	Lens Magnification	0.7X	1X	2.0X	3.0X	4X	4.5X
(Diagonal * Horizontal*Vertical)	1/2" CCD	11.43x9.14x6.86	8.00x6.40x4.80	4.00x3.20x2.40	2.67x2.13x1.60	2.00x1.60x1.20	1.78x1.42x1.07
Illumination	Contour	LED Parallel Contour Illumination					
	Surface	5-ring 8-division 0~255 grade continue adjustable					
Software System		iMeasuring 4.1 Fully Auto Measuring Software					
Working Environment		Temperature 20°C \pm 2°C, Humidity Range <2°C/hr, Humidity 30~80%, Vibration <0.002g, <15Hz					
Power		220V/50Hz/10A					

* L is measuring length, unit is mm, the mechanical accuracy of Z-axis and focus accuracy is greatly related to the surface of the workpiece.

**Magnification is approximate value, it is related to the dimension of monitor and resolution.

Customers can choose 0.5X or 2X optional objective, and realize image magnification: 10X~64.5X or 40X~258X.

Vertical Video Projector

VP Series



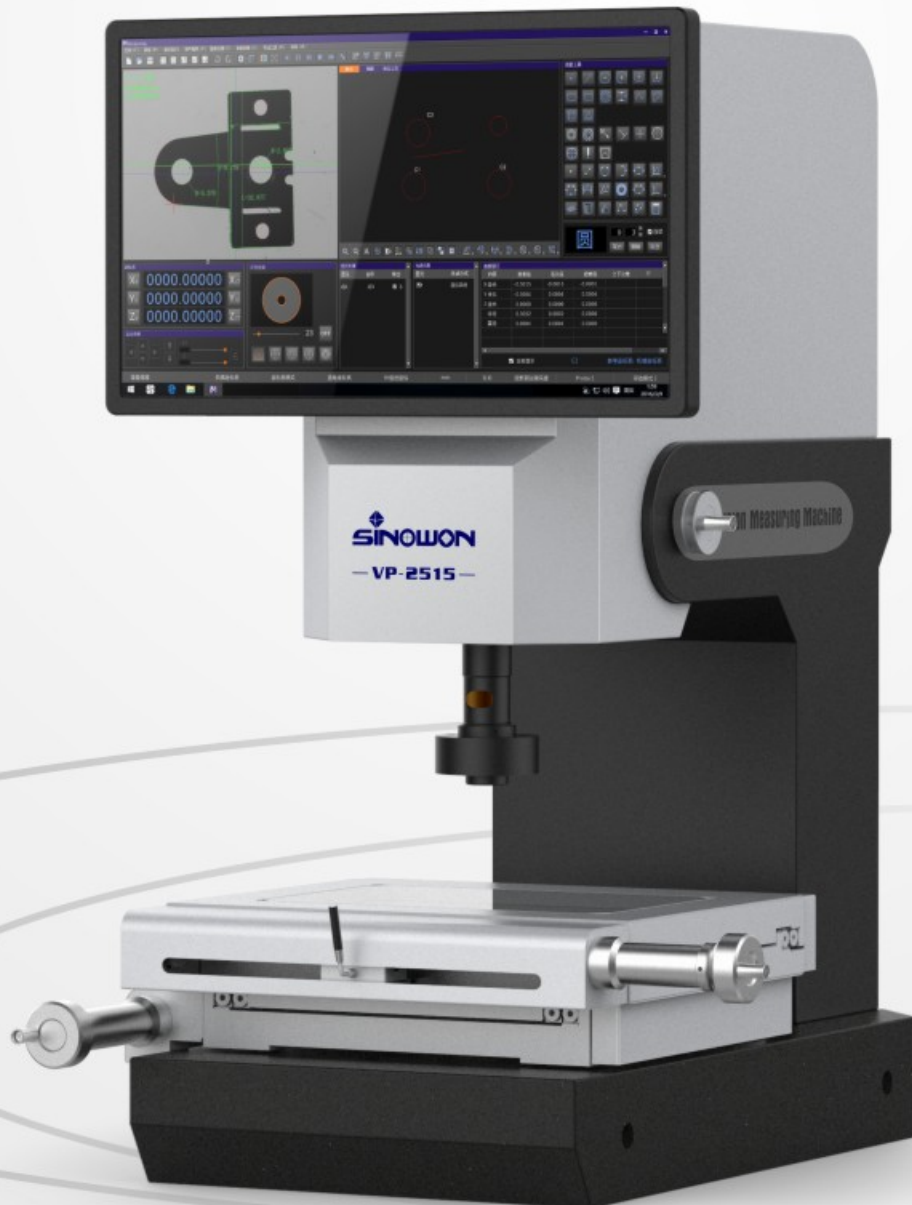
High Accuracy



Excellent Quality



Long Using Life



+ Characteristic

- The lifting system adopts linear guide rail and precision screw drive, which makes the lift drive more comfortable and stable;
- With precision toothless rod and fast movement locking device, ensure return error is within 2um;
- High accuracy A optical scale and precision working stage, ensure machine accuracy is within $3+L/200$ mm;
- HD zoom lens and HD color digital camera, ensure clear image without distortion;
- With programmable surface 4-ring 8-division LED cold light and contour LED parallel illumination, it can control the brightness of the 4-ring 8-division independently;
- With powerful iMeasuring2.1 software system , to enhance the control quality;
- Optional imported contact probes and 3D measuring software, it can help upgrade the machine to be coordinate measuring machine;
- Optional FexQMS measurement data analysis and real-time monitor software, enhance process control, reduce material consumption.

Partial Display



+ Specifications

Product Name		Vertical Video Projector					
Model		VP-2010	VP-2515	VP-3020			
Code#		541-200	541-210	541-220			
Working Stage Travel		200x100mm	200x150mm	300x200mm			
Focusing Travel		150mm					
Measurement Accuracy*		$\leq 3+L/200(\mu\text{m})$					
Resolution		0.0005mm					
Loading Weight		10Kg					
CCD		HD700 TVL Color CCD					
Zoom Objective Lens **		HD 6.5X Detented Zoom Lens Optical Magnification:0.7X-4.5X; Video Magnification:26X~172X(21.5" LCD)					
Field of View(mm)	Lens Magnification	0.7X	1X	2.0X	3.0X	4X	4.5X
(Diagonal* Horizontal*Vertical)	1/3" CCD	8.57x6.86x5.14	6.00x4.80x3.60	3.00x2.40x1.80	2.00x1.60x1.20	1.50x1.20x0.90	1.33x1.07x0.80
illuminating System (Software Control)		Surface: Adjustable 4-ring 8-division 0~255-grade LED Cold Illumination Contour: LED Parallel illumination LED Laser navigation illumination					
Working Environment		Temperature $20^{\circ}\text{C}\pm 2^{\circ}\text{C}$, Humidity Range $< 2^{\circ}\text{C/hr}$, Humidity 30~80%, Vibration $< 0.002\text{g}$, $< 15\text{Hz}$					
Software System		iMeasuring 2.1					
System		Support XP, WIN7, WIN8, WIN10 32/64 Bit					
Power		AC110V/60Hz; 220V/50Hz, 600W					
Dimension(L×W×H)		1460 x 1120 x 580mm	1725 x 675 x 620mm	1725 x 675 x 760mm			
Weight		280kg	330kg	380kg			

* L is measuring length, unit is mm, the mechanical accuracy of Z-axis and focus accuracy is greatly related to the surface of the workpiece.

** Magnification is approximate value, it is related to the dimension of monitor and resolution.

Customers can choose 0.5X or 2X optional objective, and realize image magnification: 13X~86X or 52X~344X.

Horizontal Video Projector
PH-3015



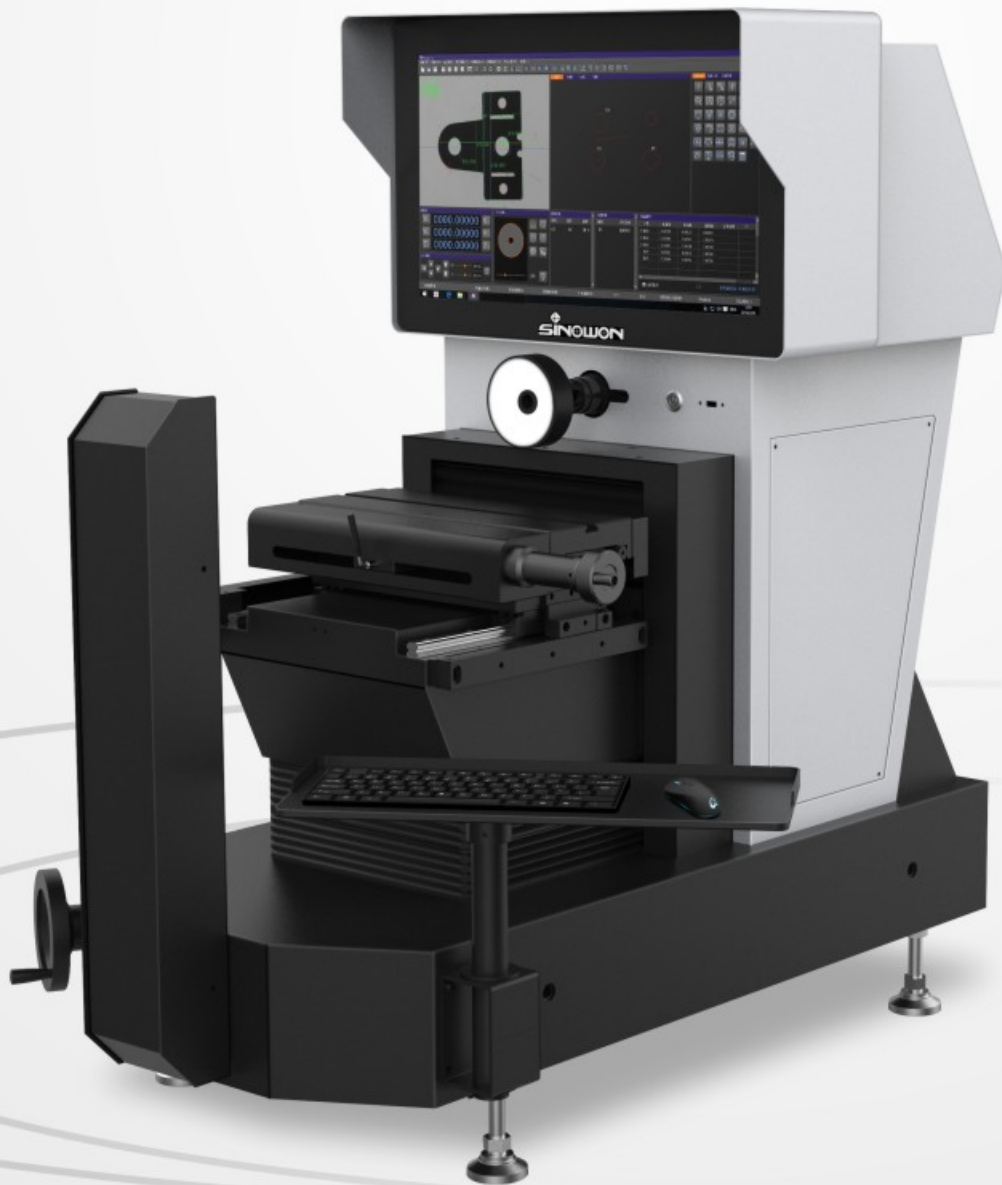
High Accuracy



Excellent Quality



Long Using Life



+ Characteristic

- The lifting system adopts linear guide rail and precision screw drive, which makes the lift drive more comfortable and stable;
- With precision toothless rod and fast movement locking device, ensure return error is within 2um;
- High accuracy A optical scale and precision working stage, ensure machine accuracy is within 3+L/200mm;
- HD zoom lens and HD color digital camera, ensure clear image without distortion;
- With programmable surface 4-ring 8-division LED cold light and contour LED parallel illumination, it can control the brightness of the 4-ring 8-division independently;
- With powerful iMeasuring software system , to enhance the control quality;
- Optional FexQMS measurement data analysis and real-time monitor software, enhance process control, reduce material consumption.

Partial Display



+ Specifications

Product Name		Horizontal Video Projector					
Model		PH-3015					
Code#		542-310					
Working Stage Travel		355X125mm					
X/Y-axis Travel		200X120mm					
Z axis		110mm					
Measurement Accuracy*		≤3+L/200um					
Resolution		0.0005mm					
CCD		HD700 TVL Color CCD					
Zoom Objective Lens **		HD 6.5X Detented Zoom Lens Optical Magnification:0.7X-4.5X; Video Magnification:23X~158X					
Field of View(mm)	Lens Magnification	0.7X	1X	2.0X	3.0X	4X	4.5X
(Diagonal*Horizontal*Vertical)	1/3" CCD	8.57x6.86x5.14	6.00x4.80x3.60	3.00x2.40x1.80	2.00x1.60x1.20	1.50x1.20x0.90	1.33x1.07x0.80
Illuminating System (Software Control)		Surface: Adjustable 4-ring 8-division 0~255-grade LED Cold Illumination Contour: LED Parallel illumination					
Working Environment		Temperature 20°C±2°C, Humidity Range <2°C/hr, Humidity 30~80%, Vibration <0.002g, <15Hz					
Software System		iMeasuring					
System		Support XP, WIN7, WIN8, WIN10 32/64 Bit					
Power		AC110V/60Hz; 220V/50Hz, 600W					
Dimension(L×W×H)		1120X720X1100mm					
Weight		165kg					

* L is measuring length. unit is mm, the mechanical accuracy of Z-axis and focus accuracy is greatly related to the surface of the workpiece.

** Magnification is approximate value, it is related to the dimension of monitor and resolution.

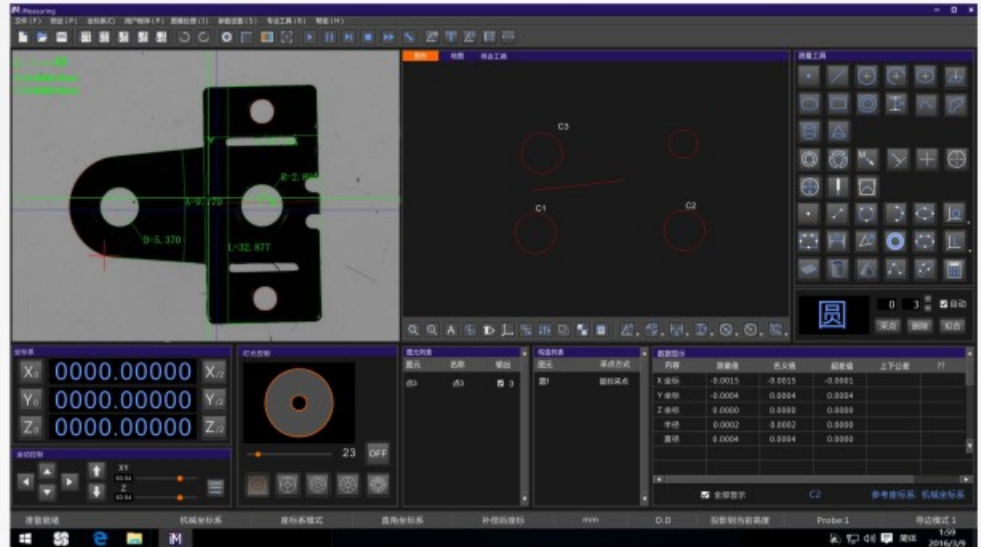
Customers can choose 0.5X or 2X optional objective, and realize image magnification: 13X~86X or 52X~344X.

Vision Measuring Software

iMeasuring

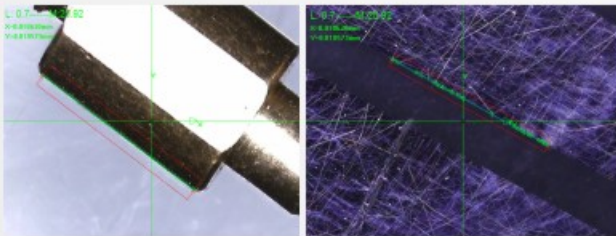
Introduction

iMeasuring software is a professional multisensor measuring software which combined with the developers tenyears experience in the measuring and software research industry. The design principle is friendly operation, powerful function, high accuracy and stability, simple maintenance.



Product Introduction

- Excellent software architecture design and fully objectoriented, to ensure the software is stable and reliable.
- Professional SPC statistical analysis software connected to measuring software, to realize that the data could automatically export to SPC database without manual operation.
- With powerful edge finder algorithm, which can help to get the edge of the shadow or dark image and ensure highly accuracy.



- It is based on different elements and supplies multiple element construction function such as Translation, rotation, extraction, combinations, parallel, vertical, mirroring, symmetry, intersection, tangent, etc.

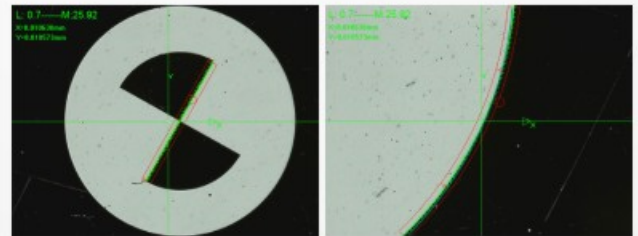


- The measuring data can auto export to TXT, WORD, EXCEL and SPC software database without the third party software conversion and manual operation.

序号	元素	内容	1	2	3	4	5
1	1-CIR1	圆心	0.292	0.292	0.292	0.292	0.292
2	2-CIR2	圆心	0.292	0.292	0.292	0.292	0.292
3	3-CIR3	圆心	0.292	0.292	0.292	0.292	0.292
4	4-CIR4	圆心	0.292	0.292	0.292	0.292	0.292
5	5-CIR5	圆心	0.292	0.292	0.292	0.292	0.292
6	6-CIR6	圆心	0.292	0.292	0.292	0.292	0.292
7	7-CIR7	圆心	0.292	0.292	0.292	0.292	0.292
8	8-CIR8	圆心	0.292	0.292	0.292	0.292	0.292
9	9-CIR9	圆心	0.292	0.292	0.292	0.292	0.292
10	10-CIR10	圆心	0.292	0.292	0.292	0.292	0.292
11	11-CIR11	圆心	0.292	0.292	0.292	0.292	0.292
12	12-CIR12	圆心	0.292	0.292	0.292	0.292	0.292

- The software can import "cancel" and "Recover" to make it easier and faster to operate.

- Support with multiple language, no need to install language pack and change the software which is convenient to local customers.
- The same model of software will be permanent free to update, it can help to reduce other trouble to customer.
- The software could automatically recognize and measure line, circle, arc and other elements.



- The software can show you different intelligent processing functions such as: ultra-limit red alert, ultra-limit pause, failure measuring pause, manual measurement, skip running, forced running, etc.

CIR1			
内容	测量值	名义值	上公差
X坐标	-1.6449	-1.6449	0.0100
Y坐标	0.2627	0.2627	0.0100
半径	1.2695	1.2895	0.0100
直径	2.5391	2.5790	0.0100

- The software has breakpoint setting function, it can be intelligent switched between manual measurement and auto measurement.



- It can easily measure flatness quickly with powerful laser measuring function, and test the small bumps, pits, V-angle and high-precision surface scanning while video and probe cannot test it.

- The software can supply auxiliary light-dimmer indicated function to avoid measuring error caused by light intensity problem and improve measuring accuracy and efficiency.

- The software can supply many function such as accurate focus, quick focus, image height measurement, and the repeatability can reach to 3um(above 2x magnification).

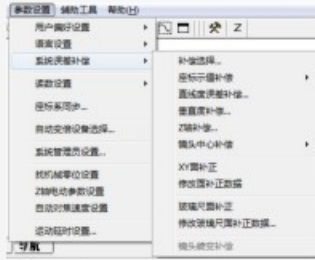


- The software supply multiple running control mode, which make it faster and convenient to position. 1. Operate handle; 2. Click middle key in the image window, long-press right key; 3. Click middle key in the drawing window;

4. Move element list window to the primitive; 5. Click the mouse in the running control window; 6. Click middle key in the scan window; 7. Click middle key in the map window; 8. Input coordinate value.



- The software supply multiple system error correction function, such as: Linear compensation, sector compensation, vertical error compensation, Z axis linear error compensation, lens center offset error compensation, to ensure accuracy can reach to 0.002 mm any place in the XY area.



- The software can support to add simple probe based on the video measurement, to realize 3D measurement.

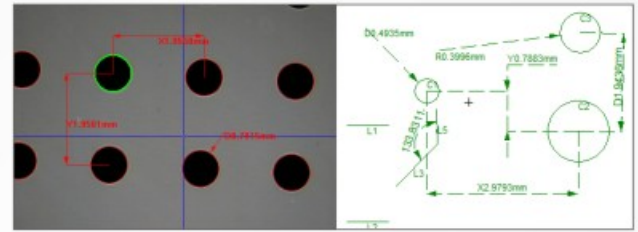


- The software can input viewport navigation, to be convenient to position and get a test place by clicking middle key.

- The software can easily and quickly import and export DXF file and set up coordinate system for auto measurement.



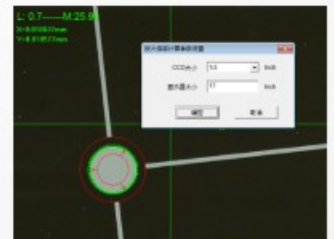
- The image window and drawing window can display the measured elements and marking 2D dimension, which get the result directly.



- The software can photograph mosaic the workpiece to get a large map, then make a large map and mark it.



- The software can auto calculate and mark the present magnification and video magnification, and display the pixel measurement value.



Sinowon Vision Measuring Machine Software Version Number

Version	Video Measurement	Linear Scale Signal	Illumination Control	Manual Probe Measurement	Auto Focus	Auto Stage	Auto Zoom	Auto Probe	Probe Auto Conversion	Laser Measurement	Suitable Models
IM1.0	√	X	X	X	X	X	X	X	X	X	VM100
IM1.5	X	√	X	X	X	X	X	X	X	X	VP300,VP400, PH400, PH600
IM2.0	√	√	X	X	X	X	X	X	X	X	VMM
IM2.1	√	√	√	X	X	X	X	X	X	X	IVISION/VP/PH
IM2.2	√	√	√	X	√	X	X	X	X	X	IFOUCS
IM3.1	√	√	√	√	X	X	X	X	X	X	ITOUCH
IM4.1	√	√	√	X	√	√	√	X	X	X	MVS/AutoVision
IM4.2	√	√	√	√	√	√	√	√	X	X	MVA/MVH/AutoTouch
IM5.0	√	X	√	X	X	X	X	X	X	√	AutoScan
IM6.0	√	X	√	X	X	X	X	X	X	X	IVS-30/60/80/160/240

Contact us for brand new, refurbished or used SINOWON Equipment



AGS-TECH Inc.

Phone: +1-505-550-6501 and +1-505-565-5102 Fax: +1-505-814-5778

Email: sales@agstech.net

Web: <http://www.agstech.net>