

Best solution  
Better integration

# BIPV PARKING

## PV Parkings

### MATERIALS

- 3.2 mm tempered glass  
high-transparency
- 0.76 mm PVB layer
- 0.21 mm PhotoVoltaic cells
- 0.76 mm PVB layer
- 3.2 mm tempered glass

### Composition:



### 60 CELLS PV PANEL

#### SI-ESF-M-BIPV-CT-M156-60

Size: 1700 x 1000 mm

Weight: 30 kg

Matrix: 10 x 6

Transparency: 13.3 %

Power: 315 Wp

Connectors: Type 3

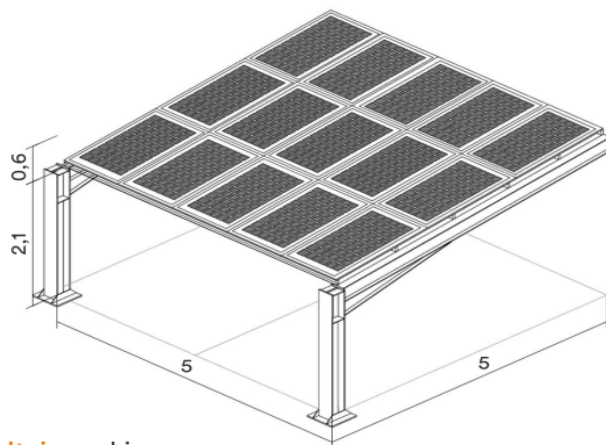
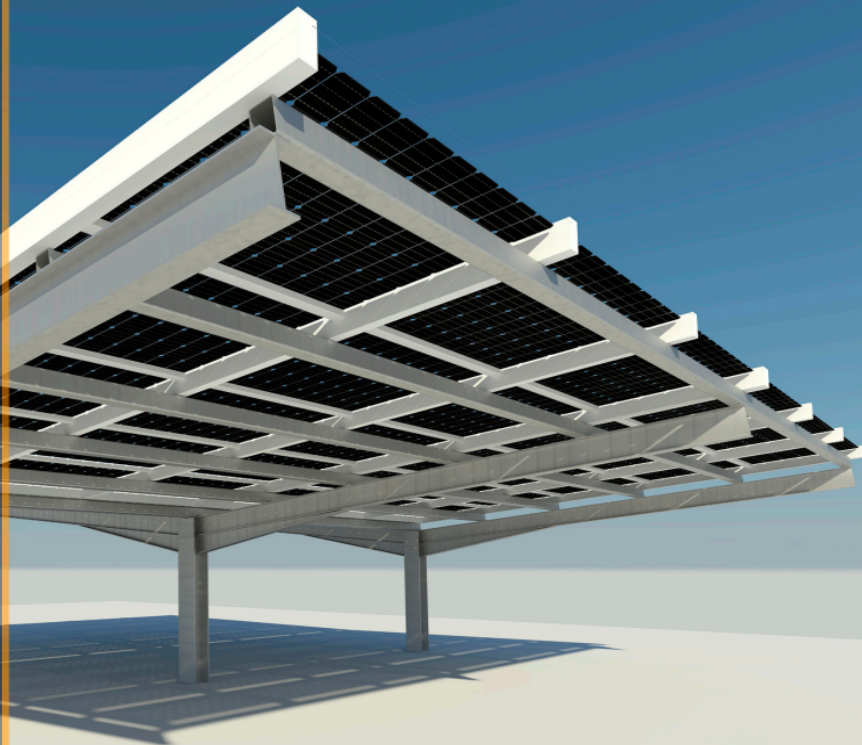
### CONFIGURATIONS

	Simple	Double
Parking places	2	4
N° Modules	15	30
Width (m)	5	10
Long (m)	5	5
Area (m²)	25	50
Max Power (Wp)	4725	9450

### HEIGHT:

Top: 2.7 m

Lower: 2.1 m



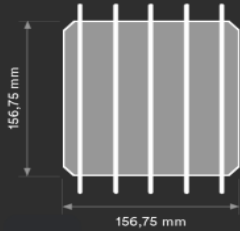
**T**he **photovoltaic** parkings are an alternative form to replace the materials which traditionally are only used in the construction to generate **shades**.

AGS-TECH, Inc., Ph: +1 (505) 550-6501, Fx:+1 (505) 814-5778, Em: sales@agstech.net,

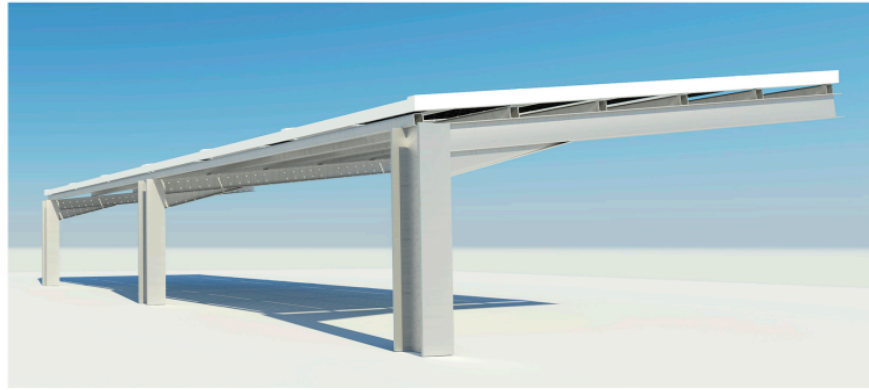
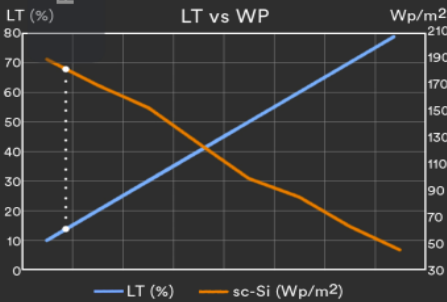
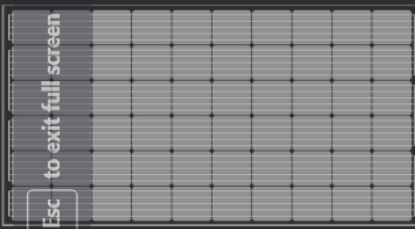
Web: <http://www.agstech.net>

# BIPV

One of the great advantages of Solar architectural integration **photovoltaic** glasses is that they act as a filter for ultraviolet and infrared radiation, both harmful to health, in addition to generating clean and **free energy** thanks to the sun.



Monocrystalline  
 • sc-Si PV  
 • 5bb connection  
 • high efficiency



Integrated **Photovoltaic**



+ Energy + Saving - Outlay - CO2

**CE** 2014/35/EU  
EN 50583-1

**ISO** ISO 9001  
ISO 14001  
ISO 45001

**IEC** IEC/EN 61215  
IEC/EN 61730  
IEC/EN 63092

**nZEB** Nearly  
Zero Energy  
Buildings

**ISO 1064**  
Protocolo GHG

**WEEE**  
2002/96/CE

**Fast Return Of  
Investment**  
material

**12/25 years**  
guarantee

**Photovoltaic  
Architecture**

**High  
satisfaction**

**High  
resistance**

**Low  
deterioration**



AGS-TECH, Inc., Ph: +1 (505) 550-6501, Fx:+1 (505) 814-5778, Em: sales@agstech.net,

Web: <http://www.agstech.net>