

Best solution
Better integration

BIPV WINDOW

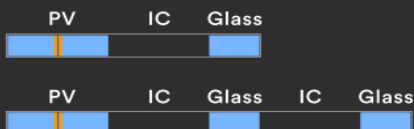
PV Panel

MATERIALS

- 4 mm tempered glass
high-transparency
- 0.76 mm PVB layer
- 0.21 mm PhotoVoltaic cells
- 0.76 mm PVB layer
- 4 mm tempered glass
- 6 - 15 mm insulation chamber
- 4 mm tempered glass
- 0.76 mm PVB layer
- 4 mm tempered glass

Insulation Chamber/s:

- 6/9/12/15 mm (air/argon)



Size:

600 x 1200 mm

Junction Box:

Border

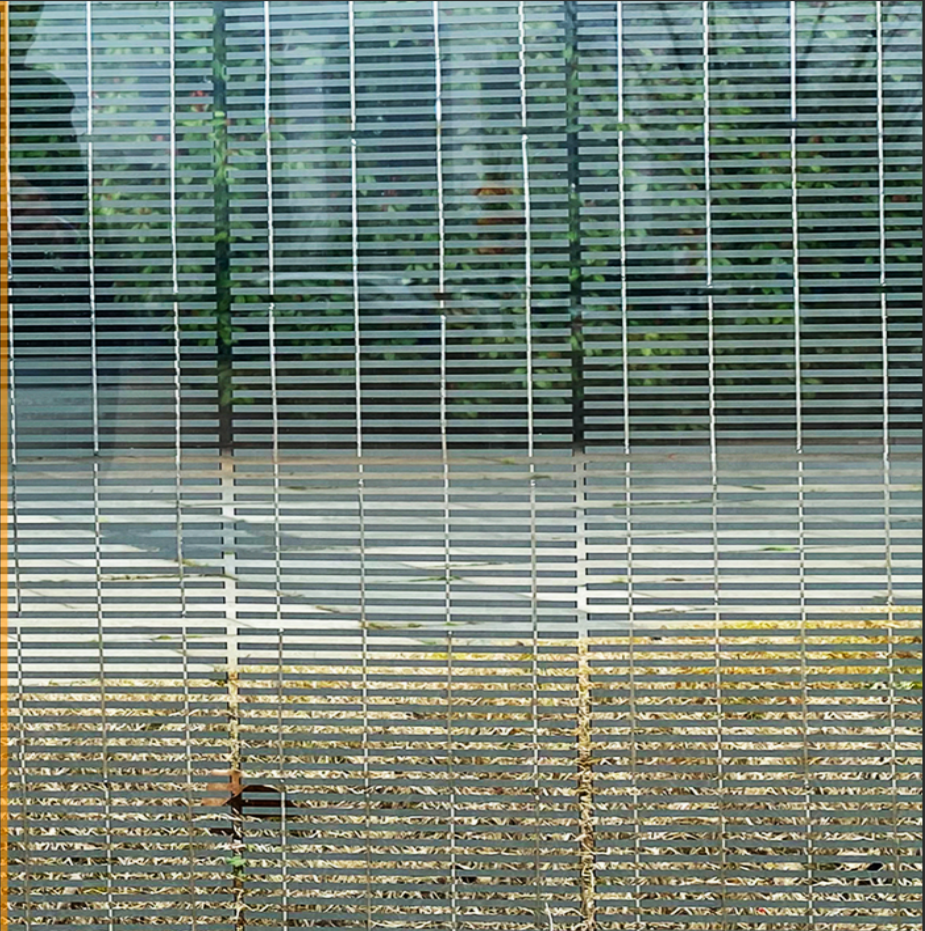
Cable:

4 mm²

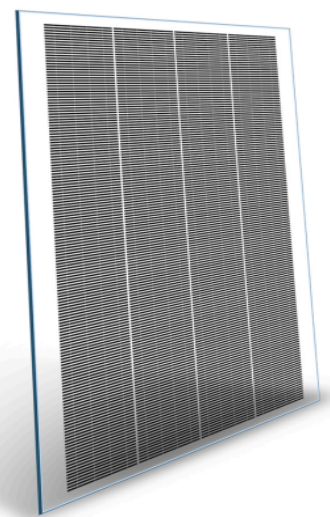


Connectors:

Type 3



Solar Innova **photovoltaic windows** are a perfect solution as they constitute a range of active technological glass capable to generate electrical energy, which can be used in **new construction** and **renovation buildings**, allowing electrical autonomy and energy savings.



AGS-TECH, Inc., Ph: +1 (505) 550-6501, Fx:+1 (505) 814-5778, Em: sales@agstech.net,

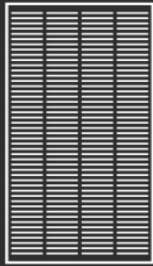
Web: <http://www.agstech.net>

BIPV

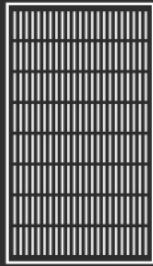
The architectural **integration** of photovoltaic solar panels in construction makes it possible to create glazed surfaces that, in addition to being an **esthetic and functional** novelty, generate electrical energy.



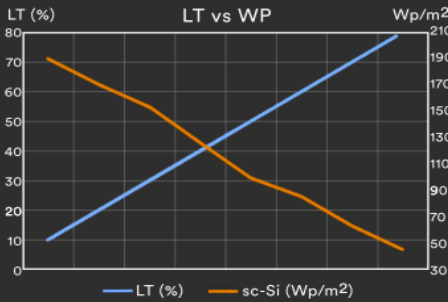
- Monocrystalline
- sc-Si PV
 - 5bb connection
 - high efficiency



Horizontal



Vertical



SOLAR RADIATION REDUCTION



+ Energy + Saving - Outlay - CO₂



2014/35/EU
EN 50583-1



ISO 9001
ISO 14001
ISO 45001



IEC/EN 61215
IEC/EN 61730



nZEB Nearly
Zero Energy
Buildings



ISO 1064
GHG Protocol



WEEE
2002/96/CE



Fast Return Of
Investment
material



12/25 years
guarantee



Photovoltaic
Architecture



High
satisfaction



High
resistance



Low
deterioration



AGS-TECH, Inc., Ph: +1 (505) 550-6501, Fx: +1 (505) 814-5778, Em: sales@agstech.net,

Web: <http://www.agstech.net>