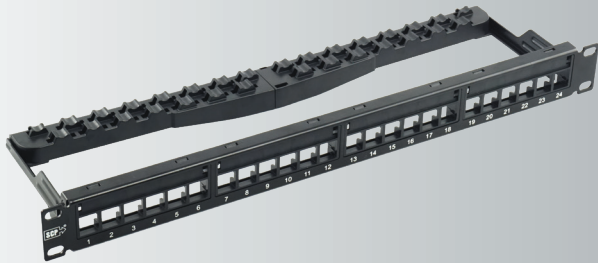


Get your private label program started today!
1-505-550-6501



www.agstech.net



Serving the Custom Installation, AV, DataCom, Electrical, CATV and Security markets for over 20 years.



 **USA WAREHOUSE**



BULK CABLE ACCESSORY PRODUCT LINES



Phone: +1-505-550-6501

Email: sales@agstech.net

Web: www.agstech.net

PRODUCT LINES

USA / NORTH AMERICA

OUR COMPANY

Manufacturing plant is a leading manufacturer and global supplier of low voltage cables and infrastructure accessories. Serving the Custom Installation, AV, DataCom, Electrical, CATV, and Security markets for over 20 years. Please find in this brochure a listing of our core products and product line solutions for our USA warehouse.

For our EU warehouses, please refer to our Europe brochure.



CELEBRATING 20 YEARS IN BUSINESS



For over 20 Years manufacturer has been a trusted brand in the low voltage cable industry. Manufacturer has grown into a global industry leader with sales and distribution in over 80 countries and over 1400 inventory items.

We recognize our growth and success could not have been done without the support of our domestic/international distribution partners along with a dedicated team of people. We want to thank all of you for your support!

PRODUCTION PLANT DELIVERS LOW VOLTAGE SOLUTIONS FOR THE 21ST CENTURY



AV and ProAV



Commercial



Residential



Buying Groups



Multi-Dwelling Units



Houses of Worship



LAN/Networking



Education



Hospitality

WE LISTEN

When we get asked why a company should do business with us, the most concise reply: **WE LISTEN.** We listen to you. We listen to your challenges, your needs, your ideas and your suggestions. We then use this knowledge to develop better products, better solutions, better service, and a better company.

Our value proposition is built on four principles: **Quality, Selection, Service & Value.**

Quality

- Uncompromising commitment to consistently deliver high quality products
- Industry innovation and leadership. Not just another brand on a box
- 3rd Party Certifications: UL, cUL, ETL, CPR EuroClasses Eca to B2ca
- Our popular tangle-free & lightweight pull boxes, now even better
- Lifetime Warranty bulk cables
- Growing list of TAA compliant products

Selection

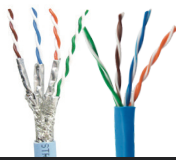
- Wide product range focused on end-to-end solutions
- Over 1400 total sku's and over 250 million feet of cable in stock
- Products sold in over 80 countries worldwide
- Ongoing product development to meet your needs today and tomorrow

Service

- Knowledgeable team of people that are easy to do business with
- Training support to our value-added distributors
- Fast same day shipping from USA warehouses
- Convenient distribution centers –
USA: Florida & Texas; Europe: The Netherlands
- Private label, OEM, and Factory Direct for our international customers

Value

- Affordable solutions without compromising on quality
- Best combination of quality, selection, service & pricing in the industry



Category/LAN Cables

The plant is a leading manufacturer and global supplier of low voltage cables and connectivity accessories. Category/LAN cables provide the highest quality, performance and value on the market today. Manufacturer offers a wide variety of Category/LAN solutions to accommodate almost any installation need. We feature our HDBaseT Enhanced Category/LAN cables. Plant was the first cable manufacturer to have their cables HDBaseT Recommended. Our Category/LAN cables come in a variety of constructions, CPR ratings, jacket colors, and packaging options. Most of our Category/LAN cables come in our installer friendly "tangle free" Reelx II boxes. All of our Category/LAN cables come with 25 Year System Performance Warranty.

CAT7A - Class Fa

Features		Compliance				Applications		
1200MHz tested 10GBaseT; Descending FT and Zone/Outlet Jkt Markings; Easy Strip Jacket. Limited Lifetime Warranty		ANSI/TIA 568.2-D; ISO/IEC 11801 Class Fa; PoE: IEEE 802.3bt; UL CMR c(UL) FT4; UL 444, UL 1666; RoHS				High performance IT, LAN & Ethernet installations. Suitable for use in all Class Fa structured wiring systems. PoE/PoH Compliant		
Part Number	Construction	Conductors/Insulation	Nom. OD	Jacket / Color	Installation Rating	Packaged Length	Weight	
Cat7a S/FTP Non-Plenum Construction:								
CAT7A-BL · CAT7A-WT	4pr S/FTP	23AWG SOL BC / SFPE	7.5mm/0.295"	PVC - Blue, White	UL CMR/FT4	305m/1000ft Spool	20.8kgs/46lbs	
Cat7a S/FTP Low Smoke Zero Halogen Construction:								
CAT7A-LSZH-BL	4pr S/FTP	23AWG SOL BC / SFPE	7.5mm/0.295"	LSZH - Blue	IEC 60332-1-2	305m/1000ft Spool	20.8kgs/46lbs	
HNCPROPLUS-7A-LSZH	4pr S/FTP	23AWG SOL BC / SFPE	7.5mm/0.295"	PVC - White	IEC 60332-1-2	305m/1000ft Spool	20.8kgs/46lbs	

CAT6A - Class Ea

Features		Compliance				Applications		
600MHz tested 10GBaseT; UL Listed; HDBaseT Enhanced; Descending FT and Zone/Outlet Jkt Markings; Limited Lifetime Warranty		ANSI/TIA 568.2-D; ISO/IEC 11801 Class Ea; IEC 60332-1-2; PoE: IEEE 802.3bt; HDBaseT; UL CMR c(UL) FT4; ETL CMP FT6, CMR FT4; UL 444, UL 1666; RoHS				High performance IT, LAN & Ethernet installations. Suitable for use in all Class Ea structured wiring systems. HDBaseT Recommended; PoE/PoH Compliant		
Cat6a Shielded								
Part Number	Construction	Conductors/Insulation	Nom. OD	Jacket / Color	Installation Rating	Packaged Length	Weight	
Cat6a U/FTP Plenum Construction:								
CAT6A-SHP-BL	4pr U/FTP	23AWG SOL BC / F-FEP	7.3mm/0.287"	LS-PVC - Blue	ETL CMP/CL3P	305m/1000ft Spool	18.6kgs/41lbs	
Cat6a U/FTP Low Smoke Zero Halogen Construction:								
CAT6A-U/FTP-LSZH-BL	4pr U/FTP	23AWG SOL BC / SFPE	7.3mm/0.287"	LSZH - Blue	IEC 60332-1-2	305m/1000ft Spool	18.6kgs/41lbs	
HNCPROPLUS-6A-LSZH	4pr U/FTP	23AWG SOL BC / SFPE	7.4mm/0.291"	LSZH - Blue	IEC 60332-1-2	305m/1000ft Spool	18.6kgs/41lbs	
Cat6a U/FTP Non-Plenum Construction:								
CAT6A-U/FTP-BL · CAT6A-U/FTP-WT	4pr U/FTP	23AWG SOL BC / SFPE	7.3mm/0.287"	PVC - Blue, White	UL CMR/FT4	305m/1000ft Spool	18.6kgs/41lbs	
CAT6A-U/FTP-BL-ETL · CAT6A-U/FTP-WT-ETL	4pr U/FTP	23AWG SOL BC / SFPE	7.3mm/0.287"	PVC - Blue, White	ETL CMR/FT4	305m/1000ft Spool	18.6kgs/41lbs	
Cat6a F/FTP Non-Plenum Construction:								
CAT6A-F/FTP-BL · CAT6A-F/FTP-WT	4pr F/FTP	23AWG SOL BC / SFPE	7.2mm/0.283"	PVC - Blue, White	UL CMR/FT4	305m/1000ft Spool	19.6kgs/43lbs	
CAT6A-F/FTP-BL-ETL · CAT6A-F/FTP-WT-ETL	4pr F/FTP	23AWG SOL BC / SFPE	7.2mm/0.283"	PVC - Blue, White	ETL CMR/FT4	305m/1000ft Spool	19.6kgs/43lbs	
Cat6a U/FTP Direct Burial/Outdoor Rated:								
CAT6A-SH-DB	4pr U/FTP	23AWG SOL BC / SFPE	7.3mm/0.287"	LLDPE - Black	Direct Burial/Outdoor	305m/1000ft Spool	18.2kgs/40lbs	
Cat6a Unshielded								
Part Number	Construction	Conductors/Insulation	Nom. OD	Jacket / Color	Installation Rating	Packaged Length	Weight	
Cat6a UTP Plenum Construction:								
CAT6A-P-XX	4pr U/UTP	23AWG SOL BC / FEP	6.1mm/0.24"	LS-PVC - Black, Blue, White	UL CMP/CL3P	305m/1000ft Spool	18kgs/40lbs	
Cat6a UTP Low Smoke Zero Halogen Construction:								
HNCPROPLUS-6A-UTP-LSZH-BL	4pr U/UTP	23AWG SOL BC / FEP	6.8mm/0.267"	LSZH - Blue	IEC 60332-1-2	305m/1000ft Spool	18.5kgs/41lbs	
Cat6a UTP Non-Plenum Construction:								
CAT6A · CAT6A-BK · CAT6A-GN CAT6A-OR · CAT6A-WT · CAT6A-YL	4pr U/UTP	23AWG SOL BC / HDPE	6.8mm/0.267"	PVC - Blue, Black, Green, Orange, White, Yellow	UL CMR/FT4	305m/1000ft Spool	17kgs/38lbs	
HNCPROPLUS-6A-UTP-XX-BX	4pr U/UTP	23AWG SOL BC / HDPE	7.3mm/0.287"	PVC - Black, Blue, Green, White	UL CMR/FT4	305m/1000ft Reel in Box	19.1kgs/42lbs	
HNCPROPLUS-6A-UTP-XX	4pr U/UTP	23AWG SOL BC / HDPE	7.3mm/0.287"	PVC - Black, Blue, Green, Orange, Red, White	UL CMR/FT4	305m/1000ft Spool	18.5kgs/41lbs	

CAT6 - Class E

Features		Compliance				Applications		
550MHz tested 1000BaseT Gigabit; HDBaseT Enhanced; UL Plenum/Riser; UV Sun Resistant; Descending FT and Zone/Outlet Jkt Markings; Packaging: Spool, Reel-in-Box, Tangle-Free Reelx II Boxes; Limited Lifetime Warranty		ANSI/TIA 568.2-D; ISO/IEC 11801 Class E; IEC 60332-1-2; PoE: IEEE 802.3bt; HDBaseT Recommended; UL CMP c(UL) FT6; UL CMR c(UL) FT4; ETL CMP FT6, CMR FT4; UL 444, UL 1666; RoHS				High performance IT, LAN & Ethernet installations. Suitable for use in all Class E structured wiring systems. PoE/PoH Compliant		
Cat6 Shielded								
Part Number	Construction	Conductors/Insulation	Nom. OD	Jacket / Color	Installation Rating	Packaged Length	Weight	
Cat6 F/UTP Plenum Construction:								
CAT6SHP-BL · CAT6SHP-GY · CAT6SHP-WT	4pr F/UTP	23AWG SOL BC / FEP	7.5mm/0.295"	LS-PVC - Blue, Gray, White	ETL CMP/FT6	305m/1000ft Spool	21kgs/46lbs	
Cat6 F/UTP Non-Plenum Construction:								
CAT6SH-BK · CAT6SH-BL · CAT6SH-GY · CAT6SH-WT	4pr F/UTP	23AWG SOL BC / HDPE	7.5mm/0.295"	PVC - Black, Blue, Gray, White	UL CMR/FT4	305m/1000ft Spool	21kgs/46lbs	
HNCPROPLUS-SH-PK	4pr F/UTP	23AWG SOL BC / HDPE	7.5mm/0.295"	UV Sun Res PVC - Pink	UL CMR/FT4	305m/1000ft Box	21kgs/46lbs	
CAT6SH-WT-LSZH	4pr F/UTP	23AWG SOL BC / HDPE	7.5mm/0.295"	LSZH - White	IEC 60332-1-2	305m/1000ft Spool	20.5kgs/45lbs	
Cat6 Shielded F/UTP Direct Burial and Outdoor Rated:								
CAT6SH-DB	4pr F/UTP	23AWG SOL BC / HDPE	7.5mm/0.295"	LLDPE - Black	Direct Burial/UV Outdoor	305m/1000ft Spool	16kgs/35lbs	
CAT6SH-OUT	4pr F/UTP	23AWG SOL BC / HDPE	7.5mm/0.295"	UV Sun Res PE - Black	UV Outdoor	305m/1000ft Spool	19kgs/42lbs	
Cat6 Unshielded								
Part Number	Construction	Conductors/Insulation	Nom. OD	Jacket / Color	Installation Rating	Packaged Length	Weight	
Cat6 UTP Plenum Construction:								
CAT6-P-BK · CAT6-P-BL · CAT6-P-GN · CAT6-P-GY CAT6-P-PUR · CAT6-P-WT · CAT6-P-YL	4pr U/UTP	23AWG SOL BC / FEP	5.6mm/0.22"	LS-PVC - Black, Blue, Green, Gray, Purple, White, Yellow	UL CMP/FT6	305m/1000ft Reel-In-Box	16.4kgs/36lbs	
CAT6-P-BK-ETL · CAT6-P-BL-ETL · CAT6-P-GN-ETL CAT6-P-WT-ETL · CAT6-P-YL-ETL	4pr U/UTP	23AWG SOL BC / FEP	5.6mm/0.22"	LS-PVC - Black, Blue, Green, White, Yellow	ETL CMP/FT6	305m/1000ft Reel-In-Box	16.4kgs/36lbs	
Cat6 UTP Low Smoke Zero Halogen Construction:								
CAT6-WT-LSZH	4pr U/UTP	23AWG SOL BC / HDPE	6.2mm/0.244"	LSZH - White	IEC 60332-1-2	305m/1000ft Box	14.5kgs/32lbs	

Cat6 Unshielded								
Part Number	Construction	Conductors/Insulation	Nom. OD	Jacket / Color	Installation Rating	Packaged Length	Weight	
<i>Cat6 UTP Non-Plenum Construction:</i>								
CAT6-BK · CAT6-BLUE · CAT6-GN · CAT6-GY CAT6-OR · CAT6-PUR · CAT6-RD · CAT6-WT · CAT6-YL	4pr U/UTP	23AWG SOL BC / HDPE	6.20mm/0.244"	PVC - Black, Blue, Green, Gray, Orange, Purple, Red, White, Yellow	UL CMR/FT4	305m/1000ft Box	14.2kgs/31lbs	
CAT6-BK-ETL · CAT6-BLUE-ETL · CAT6-GN-ETL CAT6-GY-ETL · CAT6-OR-ETL · CAT6-PUR-ETL CAT6-RD-ETL · CAT6-WT-ETL · CAT6-YL-ETL	4pr U/UTP	23AWG SOL BC / HDPE	6.20mm/0.244"	PVC - Black, Blue, Green, Gray, Orange, Purple, Red, White, Yellow	ETL CMR/FT4	305m/1000ft Box	14.2kgs/31lbs	
CAT6-BL-ETL-SPL	4pr U/UTP	23AWG SOL BC / HDPE	6.20mm/0.244"	PVC - Blue	ETL CMR/FT4	305m/1000ft Spool	13.5gs/30lbs	
CAT6-BK-HDBX · CAT6-BL-HDBX CAT6-GY-HDBX · CAT6-WT-HDBX	4pr U/UTP	23AWG SOL BC / HDPE	6.20mm/0.244"	PVC - Black, Blue, Gray, White	UL CMR/FT4	1000ft Heavy Duty Box	14.5kgs/31.5lbs	
<i>Cat6 UTP HDBaseT Enhanced Indoor/Outdoor Rated:</i>								
HNCPROPLUS-BK · HNCPROPLUS-BL · HNCPROPLUS-GN HNCPROPLUS-GY · HNCPROPLUS-OR · HNCPROPLUS-RD HNCPROPLUS-WT · HNCPROPLUS-YL	4pr U/UTP	23AWG SOL BC / HDPE	6.20mm/0.244"	UV Sun Res PVC - Black, Blue, Green, Gray, Orange, Red, White, Yellow	In/Out UL CMR/FT4	305m/1000ft Box	14.2kgs/31lbs	
<i>Cat6 Siamese (Side x Side) Unshielded:</i>								
CAT6-S-BL · CAT6-S-WT	2x 4pr U/UTP	23AWG SOL BC / HDPE	12.5mm/0.492"	PVC - Blue, White	UL CMR/FT4	1000ft Spool	31.2kgs/69lbs	
HNCPROPLUS-S-BL	2x 4pr U/UTP	23AWG SOL BC / HDPE	12.5mm/0.492"	UV Sun Res PVC - Blue	UL CMR/FT4	1000ft Spool	31.2kgs/69lbs	
<i>Cat6 UTP Direct Burial Outdoor:</i>								
CAT6-DB	4pr U/UTP	23AWG SOL BC / HDPE	7.0mm/0.275"	LLDPE - Black	Direct Burial/UV Outdoor	305m/1000ft Spool	16kgs/35lbs	

CAT5E - Class D

Features	Compliance	Applications
350MHz tested Gigabit Ethernet; HDBaseT Enhanced; UL Plenum/Riser Rated; UV Sun Resistant; Descending FT and Zone/Outlet Jkt Markings; Tangle-Free Reellex II Boxes; Limited Lifetime Warranty	ANSI/TIA 568.2-D; ISO/IEC 11801 Class D; IEC 60332-1-2; PoE, PoH. IEEE 802.3bt; HDBaseT Recommended; UL CMP C(UL) FT6; UL CMR c(UL) FT4; ETL CMP FT6, CMR FT4; UL 444, UL 1666; RoHS	High performance IT, LAN & Ethernet installations. Suitable for use in all Class D structured wiring systems. PoE/PoH Compliant

Cat5e Shielded

Part Number	Construction	Conductors/Insulation	Nom. OD	Jacket / Color	Installation Rating	Packaged Length	Weight	
<i>Cat5e F/UTP Plenum Construction:</i>								
CAT5E-SHP-BL · CAT5E-SHP-WT	4pr F/UTP	24AWG SOL BC / FEP	5.9mm/0.232"	LS-PVC - Blue, White	ETL CMP/FT6	305m/1000ft Box	14.5kgs/32lbs	
<i>Cat5e F/UTP Non-Plenum Construction:</i>								
CAT5E-SH-BK · CAT5E-SH-BL · CAT5E-SH-GY · CAT5E-SH-WT	4pr F/UTP	24AWG SOL BC / HDPE	6.0mm/0.236"	PVC - Black, Blue, Gray, White	UL CMR/FT4	305m/1000ft Box	13.2kgs/29lbs	
<i>Cat5e Shielded HDBaseT Enhanced Indoor/Outdoor Rated:</i>								
HNCPRO-SH-PK	4pr F/UTP	24AWG SOL BC / HDPE	6.0mm/0.236"	UV Sun Res PVC - Pink	UL CMR/FT4	305m/1000ft Box	14kgs/31lbs	
<i>Cat5e F/UTP Direct Burial and Outdoor Rated:</i>								
CAT5E-SH-DB	4pr F/UTP	24AWG SOL BC / HDPE	6.5mm/0.256"	LLDPE - Black	Direct Burial/UV Outdoor	305m/1000ft Spool	15.8kgs/35lbs	
CAT5E-AER	4pr F/UTP w/Mess	24AWG SOL BC / HDPE	6.5mm/0.256"	LLDPE - Black	UV Outdoor	305m/1000ft Spool	17kgs/37lbs	

Cat5e Unshielded

Part Number	Construction	Conductors/Insulation	Nom. OD	Jacket / Color	Installation Rating	Packaged Length	Weight	
<i>Cat5e UTP Plenum:</i>								
CAT5E-P-BK · CAT5E-P-BL · CAT5E-P-GN CAT5E-P-GY · CAT5E-P-WT · CAT5E-P-YL	4pr U/UTP	24AWG SOL BC / FEP	4.4mm/0.173"	Plenum - Black, Blue, Green, Gray, White, Yellow	UL CMP/FT6	305m/1000ft Box	9.4kgs/21lbs	
CAT5E-P-BL-ETL · CAT5E-P-WT-ETL	4pr U/UTP	24AWG SOL BC / FEP	4.4mm/0.173"	Plenum - Blue, White	ETL CMP/FT6	305m/1000ft Box	9.4kgs/21lbs	
<i>Cat5e UTP HDBaseT Enhanced Indoor/Outdoor Rated:</i>								
HNCPRO-BL · HNCPRO-GN · HNCPRO-WT · HNCPRO-YL	4pr U/UTP	24AWG SOL BC / HDPE	5.1mm/0.20"	UV Sun Res PVC - Blue, Green, White	UL CMR/FT4	305m/1000ft Box	9.75kgs/21.5lbs	
<i>Cat5e PVC Unshielded:</i>								
CAT5E-BK · CAT5E-BLUE · CAT5E-GN · CAT5E-GRAY · CAT5E-OR CAT5E-PUR · CAT5E-RD · CAT5E-WT · CAT5E-YL	4pr U/UTP	24AWG SOL BC / HDPE	5.1mm/0.20"	PVC - Black, Blue, Green, Gray, Orange, Purple, Red, White, Yellow	UL CMR/FT4	305m/1000ft Box	9.7kgs/21lbs	
CAT5E-BLUE-5 · CAT5E-GN-5 · CAT5E-WT-5 · CAT5E-YL-5	4pr U/UTP	24AWG SOL BC / HDPE	5.1mm/0.20"	PVC - Blue, Green, White, Yellow	UL CMR/FT4	152m/500ft Box	5.4kgs/12lbs	
CAT5E-BK-HDBX · CAT5E-OR-HDBX · CAT5E-YL-HDBX	4pr U/UTP	24AWG SOL BC / HDPE	5.1mm/0.20"	PVC - Black, Orange, Yellow	UL CMR/FT4	1000ft Heavy Duty Box	9.8kgs/21lbs	
CAT5E-BK-ETL · CAT5E-BLUE-ETL · CAT5E-GN-ETL CAT5E-GRAY-ETL · CAT5E-OR-ETL · CAT5E-PUR-ETL CAT5E-RD-ETL · CAT5E-WT-ETL · CAT5E-YL-ETL	4pr U/UTP	24AWG SOL BC / HDPE	5.1mm/0.20"	PVC - Black, Blue, Green, Gray, Orange, Purple, Red, White, Yellow	ETL CMR/FT4	305m/1000ft Box	9.2kgs/20lbs	
CAT5E-BLUE-5-ETL · CAT5E-GN-5-ETL · CAT5E-PK-5-ETL CAT5E-WT-5-ETL · CAT5E-YL-5-ETL	4pr U/UTP	24AWG SOL BC / HDPE	5.1mm/0.20"	PVC - Blue, Green, Pink, White, Yellow	ETL CMR/FT4	152m/500ft Box	5.4kgs/12lbs	
<i>Cat5e Unshielded Direct Burial and Outdoor Rated:</i>								
CAT5E-DB	4pr U/UTP	24AWG SOL BC / HDPE	5.3mm/0.208"	LLDPE - Black	Direct Burial/UV Outdoor	305m/1000ft Spool	10kgs/22lbs	
CAT5E-DB-500	4pr U/UTP	24AWG SOL BC / HDPE	5.3mm/0.208"	LLDPE - Black	Direct Burial/UV Outdoor	152m/500ft Spool	5.3kgs/12lbs	
CAT5E-IN/OUT · CAT5E-IN/OUT-WT	4pr U/UTP	24AWG SOL BC / HDPE	5.1mm/0.20"	UV Sun Res PVC - Black, White	In/Out UL CMR/FT4	305m/1000ft Box	9.7kgs/21lbs	
<i>Cat5e Siamese (Side x Side) UTP Non-Plenum:</i>								
CAT5E-S-BL	2x 4pr U/UTP	24AWG SOL BC / HDPE	10.3mm/0.405"	PVC - Blue	UL CMR/FT4	305m/1000ft Box	20kgs/44lbs	
<i>Cat5e 25-Pair UTP:</i>								
CAT5E-25PR	25pr U/UTP	24AWG SOL BC / HDPE	12.0mm/0.472"	PVC - Blue	UL CMR/FT4	305m/1000ft Spool	61.4kgs/135lbs	
CAT5E-25PR-DB	25pr U/UTP Gel	24AWG SOL BC / HDPE	12.0mm/0.472"	LLDPE - Black	Direct Burial/UV Outdoor	305m/1000ft Spool	66.7kgs/147lbs	

CAT3 - Class C

Features	Compliance	Applications
10BaseT Ethernet horizontal premise cable. Suitable for use in all Class C structured wiring systems. Descending FT and Zone/Outlet Jkt Markings. Limited Lifetime Warranty.	ANSI/TIA 568.2-D Cat3; ISO/IEC 11801 Class C; UL CMR c(UL) FT4; UL 444 UL 1666; RoHS	Telephone, Data & Communications, Telephone Closet Wiring

Part Number	Construction	Conductors/Insulation	Nom. OD	Jacket / Color	Installation Rating	Packaged Length	Weight	
CAT3-25PR	25PR U/UTP	24AWG SOL BC / HDPE	12.0mm/0.472"	PVC - Blue	UL CMR/FT4	305m/1000ft Spool	61.4kgs/135lbs	
CAT3-3PR-GY	3pr U/UTP	24AWG SOL BC / HDPE	4.5mm/0.177"	PVC - Gray	UL CMR/FT4	305m/1000ft Box	6.6kgs/14.5lbs	
CAT3-2PR-GY	2pr U/UTP	24AWG SOL BC / HDPE	4.0mm/0.157"	PVC - Gray	UL CMR/FT4	305m/1000ft Box	5.35kgs/12lbs	



EasyFiber

Manufacturing plant is a leading manufacturer and global supplier of low voltage cables and connectivity accessories. Factory® cables provide the highest quality, performance and value on the market today. Manufacturer offers a wide variety of cables and accessories for most commercial/residential installations. This Line Card contains our standard stock items for Fiber cables available at our EU warehouse (The Netherlands). We have many other bulk cables that may be available through our USA warehouses, Custom Order, or through our Factory Direct Program. All of the cables on this line card are CPR rated..

EasyFiber OM3 Multimode Fiber

Features				Compliance			
Exclusive Ultra-Bendable Cables for Multimode and Single Mode. Featuring Corning® ClearCurve® and SMF-28 Ultra® bend insensitive optical glass. Provides substantially less signal loss and superior installation performance. Easier to Install.				10G Multimode OM4 50/125, LSZH, EN50575, IEC 60332-1-2, RoHS. Corning® Clearcurve® and Corning® SMF-28® Ultra. Indoor/Outdoor Rated UV Sun Res			
Part Number	Construction	Nom. OD	Jacket	Installation Rated	Packaged Length	Weight	
EasyFiber Multimode OM3 50/125, 10G - UL Riser OFNR							
EF-OM3R-DUP-AQ	Duplex Zip 10G Multimode OM3 50/125, 2.0mm	2.00mm	LS-PVC - Aqua	UL	1000ft/305m Reel-in-Box		
EF-OM3R-4DIST-AQ	4 Strand Tight Buffered Distribution, 10G Multimode OM3 50/125, 2.0mm	4.00mm	LS-PVC - Aqua	UL	1000ft/305m Reel-in-Box		
EF-OM3R-6DIST-AQ	6 Strand Tight Buffered Distribution, 10G Multimode OM3 50/125, 2.0mm	5.10mm	LS-PVC - Aqua	UL	1000ft/305m Reel-in-Box	9.1kg/20lbs	
EF-OM3R-6DIST-AQ500	6 Strand Tight Buffered Distribution, 10G Multimode OM3 50/125, 2.0mm,	5.10mm	LS-PVC - Aqua	UL	500ft/152m Reel-in-Box		
EF-OM3R-12DIST-AQ500	12 Strand Tight Buffered Distribution, 10G Multimode OM3 50/125, 2.0mm	6.20mm	LS-PVC - Aqua	UL	1000ft/305m Reel-in-Box	12.5kg/27.6lbs	
EasyFiber Multimode OM3 50/125, 10G - UL Plenum OFNP - Indoor/Outdoor Rated							
EF-OM3P-2DIST-BK	2 Strand Tight Buffered Distribution, 10G Multimode OM3 50/125, 2.0mm	4.00mm	LS-PVC - Black	In/Out UV	1000ft/305m Reel-in-Box		
EF-OM3P-2DIST-BK500	2 Strand Tight Buffered Distribution, 10G Multimode OM3 50/125, 2.0mm	4.00mm	LS-PVC - Black	In/Out UV	500ft/152m Reel-in-Box		
EF-OM3P-4DIST-BK	4 Strand Tight Buffered Distribution, 10G Multimode OM3 50/125, 2.0mm	4.00mm	LS-PVC - Black	In/Out UV	1000ft/305m Reel-in-Box		
EF-OM3P-6DIST-BK	4 Strand Tight Buffered Distribution, 10G Multimode OM3 50/125, 2.0mm,	5.10mm	LS-PVC - Black	In/Out UV	1000ft/305m Reel-in-Box		
EF-OM3P-6DIST-BK500	6 Strand Tight Buffered Distribution, 10G Multimode OM3 50/125, 2.0mm	5.10mm	LS-PVC - Black	In/Out UV	500ft/152m Reel-in-Box		
EF-OM3P-12DIST-BK	12 Strand Tight Buffered Distribution, 10G Multimode OM3 50/125, 2.0mm		LS-PVC - Black	In/Out UV	1000ft/305m Reel-in-Box		
EF-OM3P-12DIST-BK500	12 Strand Tight Buffered Distribution, 10G Multimode OM3 50/125, 2.0mm		LS-PVC - Black	In/Out UV	500ft/152m Reel-in-Box		

EasyFiber OS2 Single Mode Fiber

Features				Applications			
Exclusive Ultra-Bendable Cables for Multimode and Single Mode. Featuring Corning® ClearCurve® and SMF-28 Ultra® bend insensitive optical glass. Provides substantially less signal loss and superior installation performance. Easier to Install.				10G Single Mode OS2 9/125, LSZH, EN50575, IEC 60332-1-2, RoHS. Corning® Clearcurve® and Corning® SMF-28® Ultra. Indoor/Outdoor Rated UV Sun Res			
Part Number	Construction	Nom. OD	Jacket	Installation Rated	Packaged Length	Weight	
EasyFiber Single Mode OS2 Cables - OS2 9/125, UL Riser OFNR							
EF-OS2R-SIM-WT	Simplex Drop Single Mode OS2 9/125	4.80mm	LS-PVC - White	UL	2000ft/610m Reel-in-Box		
EF-OS2R-DUP-YL	Duplex Zip Single Mode OS2 9/125, 2.0mm	2.00mm	LS-PVC - Yellow	UL	2000ft/610m Reel-in-Box		
EF-OS2R-6DIST-YL1000	6 Strand Tight Buffered Distribution, Single Mode OS2 9/125, 2.0mm	5.10mm	LS-PVC - Yellow	UL	1000ft/305m Reel-in-Box		
EF-OS2R-12DIST-YL1000	12 Strand Tight Buffered Distribution, Single Mode OS2 9/125, 2.0mm	6.20mm	LS-PVC - Yellow	UL	1000ft/305m Reel-in-Box		
EasyFiber Single Mode OS2 Cables - OS2 9/125, UL Plenum OFNP - Indoor/Outdoor Rated							
EF-OS2P-2DIST-BK	2 Strand Tight Buffered Distribution, Single Mode OS2 9/125, 2.0mm	4.00mm	LS-PVC - Black	In/Out UV	2000ft/610m Reel-in-Box		
EF-OS2P-2DIST-BK1000	2 Strand Tight Buffered Distribution, Single Mode OS2 9/125, 2.0mm	4.00mm	LS-PVC - Black	In/Out UV	1000ft/305m Reel-in-Box		
EF-OS2P-6DIST-BK	6 Strand Tight Buffered Distribution, Single Mode OS2 9/125, 2.0mm	5.10mm	LS-PVC - Black	In/Out UV	2000ft/610m Reel-in-Box		
EF-OS2P-6DIST-BK1000	6 Strand Tight Buffered Distribution, Single Mode OS2 9/125, 2.0mm	5.10mm	LS-PVC - Black	In/Out UV	1000ft/305m Reel-in-Box		
EF-OS2P-12DIST-BK1000	12 Strand Tight Buffered Distribution, Single Mode OS2 9/125, 2.0mm		LS-PVC - Black	In/Out UV	1000ft/305m Reel-in-Box		

EasyFiber Composite & Hybrid Cables

Part Number	Construction	Nom. OD	Jacket	Installation Rated	Packaged Length	Weight
HNC-EF-1	(1) Cat6 UTP UL CMR (White) + (1) Simplex OS2 EasyFiber w/Corning® SMF-28 Ultra, UL OFNR (Yellow)	9.60mm	LS-PVC - Black	UL	1000ft/305m Spool	30kgs/66lbs
HNC-EF-2	(2) Cat6 UTP UL CMR (White/Gray) + (1) Cat6a U/FTP UL CMR (Blue) + (1) RG6/UQ CCS + (1) 2-Strand Tight Buff Dist OM3 EasyFiber w/Corning® Clearcurve, UL OFNR (Aqua)	21.50mm	LS-PVC - Blue	UL	500ft/152m Spool	47.5kgs/105lbs
HNC-EF-3	(2) Cat6 UTP UL CMR (White/Gray) + (1) Cat6a U/FTP UL CMR (Blue) + (1) 2-Strand Tight Buff Dist OM3 EasyFiber w/Corning Clearcurve, UL OFNR (Aqua)	19.0mm	LS-PVC - Blue	UL	500ft/152m Spool	43.5kgs/95lbs

Standard Fiber Cables

Part Number	Construction	Nom. OD	Jacket	Installation Rated	Packaged Length	Weight
Multimode OM3 50/125, 10G Rated, UL Riser Rated OFNR or UL Plenum Rated OFNP- Indoor/Outdoor						
F-BCM3-2R-1000	2 Strand OM3 Riser, Tight Buffered Distribution, 10G Multimode OM3 50/125	4.40mm	LS-PVC - Aqua	UL	1000ft/305m Spool	
F-BCM3-2RZIP-1000	Duplex Zip OM3 Riser, 10G Multimode OM3 50/125	3.00mm	LS-PVC - Aqua	UL	1000ft/305m Spool	
F-BCM3-6R-1000	6 Strand OM3 Riser, Tight Buffered Distribution, 10G Multimode OM3 50/125	4.80mm	LS-PVC - Aqua	UL	1000ft/305m Spool	
F-BCM3-6P-1000	6 Strand OM3 Plenum, Tight Buffered Distribution, 10G Multimode OM3 50/125	4.80mm	LS-PVC - Black	UL	1000ft/305m Spool	
F-BCM3-12P-1000	12 Strand OM3 Plenum, Tight Buffered Distribution, 10G Multimode OM3 50/125	5.80mm	LS-PVC - Black	In/Out UV	1000ft/305m Spool	



Coaxial Cables

Factory is a leading manufacturer and global supplier of low voltage cables and connectivity accessories. These cables provide the highest quality, performance and value on the market today. Manufacturer offers a wide variety of cables and accessories to accommodate most commercial/residential installations. This Line Card contains our standard stock items for Coaxial cables available at our USA warehouses. We have many other bulk cables that may be available through our USA warehouses including Private Label and OEM.

RG6/U Quad Shield Coax

Features		Compliance		Applications		
Premium 75 Ohm 3.0GHz Tested Quad (4) Shield Coax, UL Listed, Sun Resistant Jkt; Descending FT and Zone/Outlet Jkt Markings		UL TYPE CATV CMP, CMR, CM c(UL); RoHS; NEC: CATV, CATVR, CMR, CM		Audio/Video, CATV, SATV, Antenna		
Part Number	Construction	Nom. OD	Jacket / Color	Inst. Rating	Packaged Length	Weight
RG6/U Quad Shield Coax - Solid Bare Copper (BC)						
RG6/UQ-P-SPL	18AWG SOL BC F-FEP, Bonded AL Foil + AL Braid 60% + AL Foil + AL Braid 40%	6.7mm/0.264"	LS-UV-PVC	UL CMP/CL2P	305m/1000ft Spool	16kgs/35lbs
RG6/UQ-BC-BK	18AWG SOL BC FPE, Bonded AL Foil + AL Braid 60% + AL Foil + AL Braid 40%	7.2mm/0.283"	UV-PVC - Black	UL CM	305m/1000ft Box	15.5kgs/34lbs
RG6/UQ-BC-BK-5	18AWG SOL BC FPE, Bonded AL Foil + AL Braid 60% + AL Foil + AL Braid 40%	7.2mm/0.283"	FR-PVC - Black	UL CM	152m/500ft Box	8kgs/17.6lbs
RG6/UQ-BC-BK-SPL	18AWG SOL BC FPE, Bonded AL Foil + AL Braid 60% + AL Foil + AL Braid 40%	7.2mm/0.283"	FR-PVC - Black	UL CM	305m/1000ft Spool	15.9kgs/35lbs
RG6/UQ-BC-WT	18AWG SOL BC FPE, Bonded AL Foil + AL Braid 60% + AL Foil + AL Braid 40%	7.2mm/0.283"	FR-PVC - White	UL CM	305m/1000ft Box	15.5kgs/34lbs
RG6/UQ-BC-WT-5	18AWG SOL BC FPE, Bonded AL Foil + AL Braid 60% + AL Foil + AL Braid 40%	7.2mm/0.283"	FR-PVC - White	UL CM	152m/500ft Box	8kgs/17.6lbs
RG6/UQ-BC-WT-SPL	18AWG SOL BC FPE, Bonded AL Foil + AL Braid 60% + AL Foil + AL Braid 40%	7.2mm/0.283"	FR-PVC - White	UL CM	305m/1000ft Spool	15.9kgs/35lbs
RG6/UQ-S-BC-BK	Dual Coax - Siamese: 2x 18AWG SOL BC FPE, Bonded AL Foil + AL Braid 60% + AL Foil + AL Braid 40%	15mm/0.59"	FR-PVC - Black	UL CM	152m/500ft Spool	16.2kgs/36lbs
RG6/UQ-S-BC-WT	Dual Coax - Siamese: 2x 18AWG SOL BC FPE, Bonded AL Foil + AL Braid 60% + AL Foil + AL Braid 40%	15mm/0.59"	FR-PVC - White	UL CM	152m/500ft Spool	16.2kgs/36lbs
RG6/U Quad Shield Coax - Solid Copper Clad Steel (CCS)						
RG6/UQ-CCS-BK-ETL-CMR	18AWG SOL CCS FPE, Bonded AL Foil + AL Braid 60% + AL Foil + AL Braid 40%	7.15mm/0.281"	FR-PVC - Black	ETL CMR	305m/1000ft Box	14.4kgs/32lbs
RG6/UQ-CCS-BK	18AWG SOL CCS FPE, Bonded AL Foil + AL Braid 60% + AL Foil + AL Braid 40%	7.2mm/0.283"	FR-PVC - Black	UL CM	305m/1000ft Box	15kgs/33lbs
RG6/UQ-CCS-BK-SPL	18AWG SOL CCS FPE, Bonded AL Foil + AL Braid 60% + AL Foil + AL Braid 40%	7.2mm/0.283"	FR-PVC - Black	UL CM	305m/1000ft Spool	15.5kgs/34lbs
RG6/U-CCS-BK-5	18AWG SOL CCS FPE, Bonded AL Foil + AL Braid 60% + AL Foil + AL Braid 40%	7.2mm/0.283"	FR-PVC - Black	UL CM	152m/500ft Box	8.5kgs/19lbs
RG6/UQ-CCS-BK-ETL	18AWG SOL CCS FPE, Bonded AL Foil + AL Braid 60% + AL Foil + AL Braid 40%	7.3mm/0.287"	FR-PVC - Black	ETL CM	305m/1000ft Box	15kgs/33lbs
RG6/UQ-CCS-BK-ETL-SPL	18AWG SOL CCS FPE, Bonded AL Foil + AL Braid 60% + AL Foil + AL Braid 40%	7.3mm/0.287"	FR-PVC - Black	ETL CM	305m/1000ft Spool	15.5kgs/34lbs
RG6/UQ-CCS-BK-5-ETL	18AWG SOL CCS FPE, Bonded AL Foil + AL Braid 60% + AL Foil + AL Braid 40%	7.2mm/0.283"	FR-PVC - Black	ETL CM	152m/500ft Box	8.5kgs/19lbs
RG6/UQ-CCS-WT	18AWG SOL CCS FPE, Bonded AL Foil + AL Braid 60% + AL Foil + AL Braid 40%	7.2mm/0.283"	FR-PVC - White	UL CM	305m/1000ft Box	15kgs/33lbs
RG6/UQ-CCS-WT-SPL	18AWG SOL CCS FPE, Bonded AL Foil + AL Braid 60% + AL Foil + AL Braid 40%	7.2mm/0.283"	FR-PVC - White	UL CM	305m/1000ft Spool	15.5kgs/34lbs
RG6/UQ-CCS-WT-5	18AWG SOL CCS FPE, Bonded AL Foil + AL Braid 60% + AL Foil + AL Braid 40%	7.2mm/0.283"	FR-PVC - White	UL CM	152m/500ft Box	8.5kgs/19lbs
RG6/UQ-CCS-WT-ETL	18AWG SOL CCS FPE, Bonded AL Foil + AL Braid 60% + AL Foil + AL Braid 40%	7.3mm/0.287"	FR-PVC - White	ETL CM	305m/1000ft Box	15kgs/33lbs
RG6/UQ-CCS-WT-SPL-ETL	18AWG SOL CCS FPE, Bonded AL Foil + AL Braid 60% + AL Foil + AL Braid 40%	7.3mm/0.287"	FR-PVC - White	ETL CM	305m/1000ft Spool	15.5kgs/34lbs
RG6/UQ-CCS-WT-5-ETL	18AWG SOL CCS FPE, Bonded AL Foil + AL Braid 60% + AL Foil + AL Braid 40%	7.3mm/0.287"	FR-PVC - White	ETL CM	152m/500ft Box	8.5kgs/19lbs
RG6/UQ-S-CCS-BK	Dual Coax - Siamese: 2x 18AWG SOL CCS FPE, Bonded AL Foil + AL Braid 60% + AL Foil + AL Braid 40%	15mm/0.59"	FR-PVC - Black	UL CM	305m/1000ft Spool	32kgs/71lbs
RG6/UQ-S-CCS-WT	Dual Coax - Siamese: 2x 18AWG SOL CCS FPE, Bonded AL Foil + AL Braid 60% + AL Foil + AL Braid 40%	15mm/0.59"	FR-PVC - White	UL CM	305m/1000ft Spool	32kgs/71lbs

RG6/U Dual Shield Coax

Features		Compliance		Applications		
Premium 75 Ohm 3.0GHz Tested Dual Shield Coax, Solid Bare Copper Conductor, UL Listed, Descending M/FT and Zone/Outlet Jkt Markings		UL TYPE CATV c(UL) CM; RoHS		Audio/Video, CATV, CCTV transmission		
Part Number	Construction	Nom. OD	Jacket / Color	Inst. Rating	Packaged Length	Weight
RG6/U Dual Shield Coax - Solid Bare Copper (BC)						
RG6/U-BC-BK	18AWG SOL BC FPE, Bonded CU Foil, 60% AL Braid	6.8mm	FR-PVC - Black	UL CM	305m/1000ft Box	14kgs/31lbs
RG6/U-BC-BK-5	18AWG SOL BC FPE, Bonded CU Foil, 60% AL Braid	6.8mm	FR-PVC - Black	UL CM	152m/500ft Box	7.3kgs/16lbs
RG6/U-BC-WT	18AWG SOL BC FPE, Bonded CU Foil, 60% AL Braid	6.8mm	FR-PVC - White	UL CM	305m/1000ft Box	14kgs/31lbs
RG6/U-BC-WT-5	18AWG SOL BC FPE, Bonded CU Foil, 60% AL Braid	6.8mm	FR-PVC - White	UL CM	152m/500ft Box	7.3kgs/16lbs
RG6/U-BC-MES	18AWG SOL BC FPE, Bonded CU Foil, 60% AL Braid + Messenger	19mm/0.75"	FR-PVC - Black	UL CM	152m/500ft Reel in Box	10.7kgs/24lbs
RG6/U-S-BC-BK	Dual Coax - Siamese: 2x 18AWG SOL BC FPE, Bonded AL Foil + AL Braid 60%	21.3mm/0.84"	FR-PVC - Black	UL CM	152m/500ft Reel in Box	14.9kgs/33lbs
RG6/U Dual Shield Coax - Solid Copper Clad Steel (CCS)						
RG6/U-P	18AWG SOL CCS F-FEP, Bonded AL Foil + AL Braid 60%	5.9mm/0.232"	LS-PVC	UL CMP/CL2P	305m/1000ft Spool	26kgs/57lbs
RG6/U-CCS-BK	18AWG SOL CCS FPE, Bonded AL Foil + AL Braid 60%	6.8mm/0.268"	FR-PVC - Black	UL CM	305m/1000ft Box	13.8kgs/30lbs
RG6/U-CCS-BK-SPL	18AWG SOL CCS FPE, Bonded AL Foil + AL Braid 60%	6.91mm/0.272"	FR-PVC - Black	UL CM	305m/1000ft Spool	12.7kgs/28lbs
RG6/U-CCS-BK-5	18AWG SOL CCS FPE, Bonded AL Foil + AL Braid 60%	6.91mm/0.272"	FR-PVC - Black	UL CM	152m/500ft Box	7.1kgs/16lbs
RG6/U-CCS-BK-ETL	18AWG SOL CCS FPE, Bonded AL Foil + AL Braid 60%	6.8mm/0.268"	FR-PVC - Black	ETL CM	305m/1000ft Box	12.1kgs/27lbs
RG6/U-CCS-BK-ETL-SPL	18AWG SOL CCS FPE, Bonded AL Foil + AL Braid 60%	6.91mm/0.272"	FR-PVC - Black	ETL CM	305m/1000ft Spool	12.9kgs/28.5lbs
RG6/U-CCS-BK-5-ETL	18AWG SOL CCS FPE, Bonded AL Foil + AL Braid 60%	6.91mm/0.272"	FR-PVC - Black	ETL CM	152m/500ft Box	6.5kgs/14lbs
RG6/U-CCS-WT	18AWG SOL CCS FPE, Bonded AL Foil + AL Braid 60%	6.8mm/0.268"	FR-PVC - White	UL CM	305m/1000ft Box	13.8kgs/30lbs
RG6/U-CCS-WT-SPL	18AWG SOL CCS FPE, Bonded AL Foil + AL Braid 60%	6.91mm/0.272"	FR-PVC - White	UL CM	305m/1000ft Spool	12.7kgs/28lbs
RG6/U-CCS-WT-5	18AWG SOL CCS FPE, Bonded AL Foil + AL Braid 60%	6.91mm/0.272"	FR-PVC - White	UL CM	152m/500ft Box	7.1kgs/16lbs
RG6/U-CCS-WT-ETL	18AWG SOL CCS FPE, Bonded AL Foil + AL Braid 60%	6.8mm/0.268"	FR-PVC - White	ETL CM	305m/1000ft Box	12.1kgs/27lbs
RG6/U-CCS-WT-ETL-SPL	18AWG SOL CCS FPE, Bonded AL Foil + AL Braid 60%	6.8mm/0.268"	FR-PVC - White	ETL CM	305m/1000ft Spool	12.9kgs/28.5lbs
RG6/U-CCS-WT-5-ETL	18AWG SOL CCS FPE, Bonded AL Foil + AL Braid 60%	6.8mm/0.268"	FR-PVC - White	ETL CM	152m/500ft Box	6.5kgs/14lbs
RG6/U-S-CCS-BK-RIB	Dual Coax - Siamese: 2x 18AWG SOL CCS FPE, Bonded AL Foil + AL Braid 60%	21.3mm/0.84"	FR-PVC - Black	UL CM	152m/500ft Reel in Box	14.2kgs/31lbs

RG6/U Tri Shield Coax

Features		Compliance		Applications		
Premium 75 Ohm 3.0GHz Tested Tri Shield Coax, Solid Bare Copper Conductor, UL Listed, Descending M/FT and Zone/Outlet Jkt Markings		UL TYPE CATV c(UL) CM; RoHS		Audio/Video, CATV		
Part Number	Construction	Nom. OD	Jacket / Color	Inst. Rating	Packaged Length	Weight
RG6/U-T-CCS-WT-500	18AWG SOL CCS FPE, Bonded AL Foil + AL Braid 60% + AL Foil	7.06mm/0.278"	FR-PVC - Black	UL CM	152m/500ft Reel in Box	7.9kgs/17.5lbs

RG6/U 95% Coax

Features		Compliance		Applications		
Premium 75 Ohm 3.0GHz Tested Coax, Solid Bare Copper Conductor, 95% BC Braid Shield, UL Listed, Descending M/FT and Zone/Outlet Jkt Markings		UL TYPE CATV c(UL) CM; RoHS		CCTV transmission, Audio/Video		
Part Number	Construction	Nom. OD	Jacket / Color	Inst. Rating	Packaged Length	Weight
RG6/U95-BK	18AWG SOL BC FPE, 95% BC Braid	6.91mm/0.272"	FR-PVC - Black	UL CM	305m/1000ft Box	15kgs/33lbs
RG6/U95-S-BK	18AWG SOL BC FPE, 95% BC Braid + Pwr: 2C/18AWG Str BC, Siamese	19mm/0.75"	FR-PVC - Black	UL CM	305m/1000ft Spool	23.1kgs/51lbs
RG6/U95-S-BK-500	18AWG SOL BC FPE, 95% BC Braid + Pwr: 2C/18AWG Str BC, Siamese	19mm/0.75"	FR-PVC - Black	UL CM	152m/500ft Reel in Box	10kgs/22lbs

RG11/U Coax

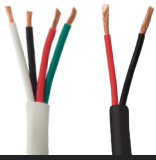
Features		Compliance		Applications		
Premium 75 Ohm 3.0GHz Tested Coax, Solid Bare Copper Conductor, 95% BC Braid Shield, UL Listed, Descending M/FT and Zone/Outlet Jkt Markings		UL TYPE CATV c(UL) CM; RoHS		CCTV transmission, Audio/Video		
Part Number	Construction	Nom. OD	Jacket / Color	Inst. Rating	Packaged Length	Weight
RG11/U	14AWG SOL CCS FPE, Bonded AL Foil, 60% AL Braid	10mm/0.395"	FR-PVC - Black	UL CM	305m/1000ft Spool	26.5kgs/58.5lbs
RG11/U-DB	14AWG SOL CCS FPE, Bonded AL Foil, 60% AL Braid, Gel Fill	10mm/0.395"	PE - Black	Direct Burial/Outdoor	305m/1000ft Reel in Box	27.5kgs/61lbs

RG59/U Coax

Features		Compliance		Applications		
75 Ohm CCTV Coax Cable, Solid Bare Copper Conductor, UL Listed, Descending M/FT and Zone/Outlet Jkt Markings		UL TYPE CATV c(UL) CM; RoHS		Audio/Video, CCTV transmission		
Part Number	Construction	Nom. OD	Jacket / Color	Inst. Rating	Packaged Length	Weight
RG59/U 95% BC Braid - Nonplenum						
RG59/U95-BK	20 AWG SOL BC SFPE, 95% BC Braid	6.0mm/0.236"	FR-PVC - Black	UL CM	305m/1000ft Reel in Box	14.9kgs/33lbs
RG59/U95-BK-500	20 AWG SOL BC SFPE, 95% BC Braid	6.0mm/0.236"	FR-PVC - Black	UL CM	152m/500ft Box	
RG59/U95-WT	20 AWG SOL BC SFPE, 95% BC Braid	6.0mm/0.236"	FR-PVC - White	UL CM	305m/1000ft Reel in Box	14.9kgs/33lbs
RG59/U95-S-BK	20 AWG SOL BC SFPE 95% BC Braid + Pwr: 2C/18AWG Str BC, Siamese	16.9mm/0.664"	FR-PVC - Black	UL CM	305m/1000ft Spool	23.2kgs/51lbs
RG59/U95-S-BK-5	20 AWG SOL BC SFPE 95% BC Braid + Pwr: 2C/18AWG Str BC, Siamese	16.9mm/0.664"	FR-PVC - Black	UL CM	152m/500ft Spool	11.4kgs/25lbs
RG59/U95-S-BK-5-RIB	20 AWG SOL BC SFPE 95% BC Braid + Pwr: 2C/18AWG Str BC, Siamese	16.9mm/0.664"	FR-PVC - Black	UL CM	152m/500ft Reel in Box	12.8kgs/28lbs
RG59/U95-S-WT	20 AWG SOL BC SFPE 95% BC Braid + Pwr: 2C/18AWG Str BC, Siamese	16.9mm/0.664"	FR-PVC - White	UL CM	305m/1000ft Spool	23.2kgs/51lbs
RG59/U95-S-WT-5	20 AWG SOL BC SFPE 95% BC Braid + Pwr: 2C/18AWG Str BC, Siamese	16.9mm/0.664"	FR-PVC - White	UL CM	152m/500ft Spool	11.4kgs/25lbs
RG59/U95-S-WT-5-RIB	20 AWG SOL BC SFPE 95% BC Braid + Pwr: 2C/18AWG Str BC, Siamese	16.9mm/0.664"	FR-PVC - White	UL CM	152m/500ft Reel in Box	12.8kgs/28lbs
RG59/U Dual Copper Shield - Plenum						
RG59/U95-P	20 AWG SOL BC F-FEP, 95% BC Braid	5.0mm/0.196"	LS-PVC - White	UL CMP/CL2P	305m/1000ft Spool	12kgs/26.5lbs
RG59/U95-S-P	20 AWG SOL BC F-FEP 95% BC Braid + Pwr: 2C/18AWG Str BC, Siamese	13.7mm/0.54"	LS-PVC - White	UL CMP/CL2P	305m/1000ft Spool	20.9kgs/46lbs
RG59/U95-S-P-500	20 AWG SOL BC F-FEP 95% BC Braid + Pwr: 2C/18AWG Str BC, Siamese	13.7mm/0.54"	LS-PVC - White	UL CMP/CL2P	152m/500ft Spool	10.5kgs/23lbs
RG59/U Dual Copper Shield - Direct Burial						
RG59/U95-DB	20 AWG SOL BC SFPE, 95% BC Braid	6.0mm/0.236"	PE - Black	Direct Burial/Outdoor	305m/1000ft Spool	12.9kgs/28lbs
RG59/U CCA Braid - Nonplenum						
RG59/U-CCA-BK-RIB	20 AWG BC SFPE, 95% CCA BRAID	6.0mm/0.236"	FR-PVC - Black	UL CM	305m/1000ft Reel in Box	12.5kgs/27.5lbs
RG59/U-CCA-BK-5-RIB	20 AWG BC SFPE, 95% CCA BRAID	6.0mm/0.236"	FR-PVC - Black	UL CM	152m/500ft Reel in Box	6.6kgs/14.5lbs
RG59/U-CCA-WT-5-RIB	20 AWG BC SFPE, 95% CCA BRAID	6.0mm/0.236"	FR-PVC - White	UL CM	152m/500ft Reel in Box	6.6kgs/14.5lbs
RG59/U-S-CCA-BK	20 AWG SOL BC SFPE, 95% CCA Braid + Pwr: 2C/18AWG Str BC	16.9mm/0.664"	FR-PVC - Black	UL CM	305m/1000ft Spool	19.7kgs/43.5lbs
RG59/U-S-CCA-BK-5	20 AWG SOL BC SFPE, 95% CCA Braid + Pwr: 2C/18AWG Str BC	16.9mm/0.664"	FR-PVC - Black	UL CM	152m/500ft Spool	10.2kgs/22.5lbs
RG59/U-S-CCA-BK-5-RIB	20 AWG SOL BC SFPE, 95% CCA Braid + Pwr: 2C/18AWG Str BC	16.9mm/0.664"	FR-PVC - Black	UL CM	152m/500ft Reel in Box	10.2kgs/22.5lbs
RG59/U-S-CCA-WT	20 AWG SOL BC SFPE, 95% CCA Braid + Pwr: 2C/18AWG Str BC	16.9mm/0.664"	FR-PVC - White	UL CM	305m/1000ft Spool	19.7kgs/43.5lbs
RG59/U-S-CCA-WT-5	20 AWG SOL BC SFPE, 95% CCA Braid + Pwr: 2C/18AWG Str BC	16.9mm/0.664"	FR-PVC - White	UL CM	152m/500ft Spool	10.2kgs/22.5lbs
RG59/U-S-CCA-WT-5-RIB	20 AWG SOL BC SFPE, 95% CCA Braid + Pwr: 2C/18AWG Str BC	16.9mm/0.664"	FR-PVC - White	UL CM	152m/500ft Reel in Box	10.2kgs/22.5lbs
RG59/U CCA Braid - Direct Burial						
RG59/U-S-DB	20 AWG SOL BC SFPE, 95% CCA Braid, Gel Fill + Pwr: 2C/18AWG Str BC, Siamese	16.9mm/0.664"	PE - Black	Direct Burial/Outdoor	305m/1000ft Spool	20.4kgs/45lbs
RG59/U-S-DB-500	20 AWG SOL BC SFPE, 95% CCA Braid, Gel Fill + Pwr: 2C/18AWG Str BC, Siamese	16.9mm/0.664"	PE - Black	Direct Burial/Outdoor	152m/500ft Spool	12.2kgs/27lbs

Direct Burial Coax

Features		Compliance		Applications		
Premium 75 Ohm 3.0GHz Tested Quad (4) Shield Coax, UL Listed, Descending M/FT and Zone/Outlet Jkt Markings		UL CM; EN50575 CPR Compliant; RoHS		Audio/Video, CATV, SATV, Antenna		
Part Number	Construction	Nom. OD	Jacket / Color	Inst. Rating	Packaged Length	Weight
RG6/UQ-DB	18AWG SOL BC FPE, Bonded AL Foil + AL Braid 60% + AL Foil + AL Braid 40%, Gel Filled	7.54mm/0.297"	PE - Black	Direct Burial/UV Outdoor	305m/1000ft Spool	13.5kgs/30lbs
RG6/UQ-DB-CCS	18AWG SOL CCS FPE, Bonded AL Foil + AL Braid 60% + AL Foil + AL Braid 40%, Gel Filled	7.54mm/0.297"	PE - Black	Direct Burial/UV Outdoor	305m/1000ft Spool	13.5kgs/30lbs
RG6/U-DB	18AWG SOL CCS FPE, Bonded AL Foil + AL Braid 60%, Gel Filled	6.91mm/0.272"	PE - Black	Direct Burial/UV Outdoor	305m/1000ft Spool	11.5kgs/25lbs
RG11/U-DB	14AWG SOL CCS FPE, Bonded AL Foil, 60% AL Braid, Gel Fill	10mm/0.395"	PE - Black	Direct Burial/UV Outdoor	305m/1000ft Spool	27.5kgs/61lbs



Speaker Cables

Factory is a leading manufacturer and global supplier of low voltage cables and connectivity accessories. These speaker cables provide the highest quality, performance and value on the market today. Factory offers a wide variety of speaker cable solutions to accommodate almost any installation need. Our speaker cables come in a variety of CPR jacket ratings, jacket colors, and packaging options. Most of our speaker cables come in our award winning "tangle free" boxes.

Pro Grade Indoor/Outdoor HD Series - Commercial and Residential

One Cable Solution for both In-Wall and Outdoor Installations Providing Superior Performance, Flexibility and Protection.

Features			Compliance		Applications		
Highly Flexible. Indoor/Outdoor Rated. High Strand Count Oxygen Free Copper; Unshielded; Insulated twisted pair BK/RD & BK/RD/GN/WT; HD UV Sun Res PVC Jacket; Easy Strip Round Rope Lay Construction; Tangle Free Reel II Box			UL CMR CL2R/CL3R c(UL) FT4; RoHS; Low Voltage & Power Limited Systems; 300V 75°C; 14-12AWG are not recognized by c(UL).		Commercial & Residential; High Definition; Home Theater Systems, In-Wall Speakers; Class 2/3 Low Voltage Power; UL Direct Burial; Outdoor: UV Sun Resistant ; Indoor: In-Wall Riser Rated		
Part Number	AWG	Conductors	Nom. OD	Jacket / Color	Installation Rated	Packaging	Weight
16/20FC-HD-XX	16	2/65 Str OFC	6.25mm/0.246"	HD UV-PVC - Black, Purple, White	UL CMR/CL3R	152m/500ft Pull Box	8.3kgs/18lbs
16/20FC-HD-WT-HDBX	16	2/65 Str OFC	6.25mm/0.246"	HD UV-PVC - White	UL CMR/CL3R	152m/500ft Heavy Duty Box	8.5kgs/18lbs
16/40FC-HD-XX	16	4/65 Str OFC	7.0mm/0.275"	HD UV-PVC - Black, Purple, White	UL CMR/CL3R	152m/500ft Pull Box	12kgs/26lbs
14/20FC-HD-XX	14	2/105 Str OFC	7.2mm/0.283"	HD UV-PVC - Black, Purple, White	UL CL3R	152m/500ft Pull Box	12kgs/26lbs
14/40FC-HD-XX	14	4/105 Str OFC	8.3mm/0.326"	HD UV-PVC - Black, Purple, White	UL CL3R	152m/500ft Reel in Box	22.5kgs/50lbs
12/20FC-HD-XX	12	2/65 Str OFC	8.3mm/0.326"	HD UV-PVC - Black, White	UL CL3R	152m/500ft Reel in Box	17kgs/37lbs
12/40FC-HD-WT	12	4/65 Str OFC	9.8mm/0.385"	HD UV-PVC - White	UL CL3R	152m/500ft Spool	30kgs/66lbs

In-Wall Series

High Strand Count Oxygen Free Copper Speaker Cable with Smaller Cable OD for Easy Installation When Bundling through Conduit.

Features			Compliance		Applications		
Highly Flexible. High Strand Count Oxygen Free Copper; Unshielded; Insulated twisted pair BK/RD & BK/RD/GN/WT; Easy Strip PVC Jkt; Smaller OD ideal for conduit. Tangle Free Reel II Box; Descending Feet and Zone/Outlet Jacket Markings			UL CMR CL2R/CL3R c(UL) FT4; RoHS; Low Voltage & Power Limited Systems; 300V 75°C; 14-12AWG are not recognized by c(UL).		Commercial & Residential; High Definition; Home Theater Systems, In-Wall Speakers; Class 2/3 Low Voltage Power; In-Wall Riser Rated		
Part Number	AWG	Conductors	Nom. OD	Jacket / Color	Installation Rated	Packaging	Weight
16/20FC-XX	16	2/65 Str OFC	5.0mm/0.196"	PVC - Black, Purple, White	UL CMR/CL3R	500ft Pull Box	6.7kgs/15lbs
16/20FC-XX-1000	16	2/65 Str OFC	5.0mm/0.196"	PVC - Black, Purple, White	UL CMR/CL3R	1000ft Pull Box	13.6kgs/30lbs
16/20FC-WT-HDBX	16	2/65 Str OFC	5.0mm/0.196"	PVC - White	UL CMR/CL3R	152m/500ft Heavy Duty Box	6.9kgs/15lbs
16/40FC-XX	16	4/65 Str OFC	6.1mm/0.24"	PVC - Black, Orange, Purple, White	UL CMR/CL3R	500ft Pull Box	11.8kgs/26lbs
14/20FC-XX	14	2/105 Str OFC	6.3mm/0.248"	PVC - Black, Purple, White	UL CL3R	500ft Pull Box	11kgs/24lbs
14/40FC-XX	14	4/105 Str OFC	8.0mm/0.314"	PVC - Black, Purple, White	UL CL3R	500ft Reel-In-Box	22kgs/49lbs
12/20FC-WT	12	2/65 Str OFC	8.0mm/0.314"	PVC - White	UL CL3R	500ft Reel-In-Box	16.2kgs/36lbs
12/40FC-WT	12	4/65 Str OFC	9.4mm/0.37"	PVC - White	UL CL3R	500ft Spool	28.7kgs/63lbs

Low Smoke Zero Halogen Commercial/Residential Series

High Strand Count Oxygen Free Copper Speaker Cable - Flexible Indoor Rated LSZH Jacket.

Features			Compliance		Applications		
High Strand Count Oxygen Free Copper; Unshielded; Insulated twisted pair; Easy Strip LSZH Jacket; Tangle Free Reel II Box; Descending Feet and Zone/Outlet Jacket Markings			Low Smoke Zero Halogen, IEC 60332-1-2; Low Voltage & Power Limited Systems; 300V 75°C; RoHS		Commercial & Residential; High Definition; Home Theater Systems, In-Wall Speakers; Class 2/3 Low Voltage Power; Marine		
Part Number	AWG	Conductors	Nom. OD	Jacket / Color	Installation Rated	Packaging	Weight
16/20FC-LSZH-WT	16	2/65 Str OFC	5.0mm/0.196"	LSZH - White	In-Wall & Marine	152m/500ft Pull Box	6.8kgs/15lbs
14/20FC-LSZH-PUR	14	2/105 Str OFC	6.3mm/0.248"	LSZH - Purple	In-Wall & Marine	152m/500ft Pull Box	11.2kgs/25lbs
14/20FC-LSZH-WT	14	2/105 Str OFC	6.3mm/0.248"	LSZH - White	In-Wall & Marine	152m/500ft Pull Box	11.2kgs/25lbs

Contractor Series

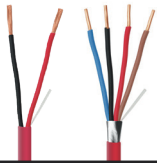
Contractor Grade Speaker Cables for Standard Installations

Features			Compliance		Applications		
Oxygen Free Copper; Unshielded; Insulated twisted pair; Easy Strip PVC Jacket; Tangle Free Reel II Box; Descending Meter and Zone/Outlet Jacket Markings			UL CMR CL2R/3R c(UL) FT4; RoHS; Low Voltage & Power Limited Systems; 300V 75°C		Residential; Speaker, Audio, Control; In-Wall Speakers; Class 2/3 Low Voltage Power		
Part Number	AWG	Conductors	Nom. OD	Jacket / Color	Installation Rated	Packaging	Weight
14/2SP-41-YL	14	2/41 Str OFC	6.4mm/0.252"	PVC - Yellow	UL CL3R	500ft Pull Box	11kgs/24lbs
14/2SP-41-YL-1000	14	2/41 Str OFC	6.4mm/0.252"	PVC - Yellow	UL CL3R	1000ft Spool	21.8kgs/48lbs
14/4SP-41-YL	14	4/41 Str OFC	8.0mm/0.314"	PVC - Yellow	UL CL3R	500ft Reel in Box	19.9kgs/44lbs

Landscape / Direct Burial Professional Series

Professionals Choice for All High Performance Landscape and Outdoor Speaker Systems. Retains Flexibility in All Outdoor Environments.

Features			Compliance		Applications		
High Strand Count Oxygen Free Copper; Unshielded; Insulated twisted pair; Easy Strip LSZH Jacket; Tangle Free Reel II Box; Descending Feet and Zone/Outlet Jacket Markings			Low Smoke Zero Halogen, IEC 60332-1-2; Low Voltage & Power Limited Systems; 300V 75°C; RoHS		Commercial & Residential; High Definition; Home Theater Systems, In-Wall Speakers; Class 2/3 Low Voltage Power; Marine		
Part Number	AWG	Conductors	Nom. OD	Jacket / Color	Installation Rated	Packaging	Weight
14/2SP-DB-500	14	2/105 Str OFC	6.4mm/0.252"	LLDPE - Black	Direct Burial/Outdoor	152m/500ft Spool	11.7kgs/26lbs
14/4SP-DB-GEL	14	4/105 Str OFC	8.2mm/0.323"	LLDPE - Black	Direct Burial/Outdoor	305m/1000ft Spool	40kgs/88lbs
14/4SP-DB-GEL-500	14	4/105 Str OFC	8.2mm/0.323"	LLDPE - Black	Direct Burial/Outdoor	152m/500ft Spool	21kgs/46lbs
12/2SP-DB	12	2/65 Str OFC	8.3mm/0.326"	LLDPE - Black	Direct Burial/Outdoor	305m/1000ft Spool	32kgs/71lbs



Security & Burglar Alarm Cables

Factory is a leading manufacturer and global supplier of low voltage cables and connectivity accessories. These cables provide the highest quality, performance and value on the market today. Manufacturer offers a wide variety of cables and accessories to accommodate most commercial/residential installations. This Line Card contains standard stock items for Security & Burglar Alarm cables available at our USA warehouses. We have many other bulk cables that may be available through our USA warehouses including Private Label and OEM.

Security Coil Packs

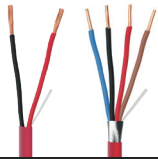
Features		Compliance			Applications			
Stranded or Solid Bare Copper Conductors, Insulated Twisted Pair; UL Listed; Descending Feet and Zone/Outlet Jkt Markings		UL CMR CL2R/CL3R, c(UL) CMR FT4 75C; UL 444; NEC Article 725; RoHS; 300V 75°			Low Voltage Security Systems; Intercom Systems; Sound/Audio Systems; Power-Limited Controls			
Stranded Copper - Non Plenum - Riser Unshielded Coil Packs								
Part Number	AWG	Conductors	Nom. OD mm/inch	CAP pF/FT	Jacket / Color	Packaged Length	Weight	
22/2COIL-XX	22	2/7 STR BC	2.13mm/0.114"	22	PVC - Beige, Black, Blue, Brown, Green, Gray, Orange, White, Yellow	500R/152m Coil Pk	1.9kgs/4.2lbs	
22/2COIL-WT-1000	22	2/7 STR BC	2.13mm/0.114"	22	PVC - White	1000ft/305m Coil Pk	3.9kgs/8.6lbs	
22/4COIL-XX	22	4/7 STR BC	3.3mm/0.131"	23	PVC - Black, Blue, Brown, Green, Gray, Orange, White, Yellow	500R/152m Coil Pk	3.4kgs/7.5lbs	
Solid Copper - Non Plenum - Riser Unshielded Coil Packs								
Part Number	AWG	Conductors	Nom. OD mm/inch	CAP pF/FT	Jacket / Color	Packaged Length	Weight	
22/2SOL-COIL-XX	22	2 SOL BC	1.83mm/0.072"	21	PVC - Beige, Black, Blue, Brown, Green, Gray, Orange, White, Yellow	500R/152m Coil Pk	1.6kgs/3.5lbs	
22/4SOL-COIL-XX	22	4 SOL BC	3.05mm/0.12"	22	PVC - Beige, Black, Blue, Brown, Green, Gray, Orange, White, Yellow	500R/152m Coil Pk	1.6kgs/3.5lbs	

Security & Alarm Non-Plenum

Features		Compliance			Applications			
Stranded or Solid Bare Copper Conductors, Insulated Twisted Pair; UL Listed; Descending Feet and Zone/Outlet Jkt Markings; Packaging: Spool or Box		Riser: UL CMR CL2R/CL3R, c(UL) FT4 75C; UL 444; NEC Article 725; RoHS; 300V 75°			Low Voltage Security Systems; Intercom Systems; Sound/Audio Systems; Power-Limited Controls			
Non-Plenum - Riser Unshielded								
Part Number	AWG	Conductors STR/SOL	Nom. OD mm/inch	CAP pF/FT	Jacket / Color	Packaged Length	Weight	
22/2-XX	22	2/7 STR BC	2.9mm/0.114"	24	PVC - Gray, White	305m/1000ft Box	4.4kgs/10lbs	
22/2-WT-500	22	2/7 STR BC	2.9mm/0.114"	24	PVC - White	152m/500ft Box	2.2kgs/5lbs	
22/2ZIP-1000	22	2/7 STR BC	3.55mm/0.14"	13	ZIP PVC - White	305m/1000ft Box	4.4kgs/10lbs	
22/2SOL-WT	22	2/SOL BC	2.67mm/0.105"	21	PVC - White	305m/1000ft Box	4kgs/9lbs	
22/2SOL-WT-500	22	2/SOL BC	2.67mm/0.105"	21	PVC - White	152m/500ft Box	2kgs/4.5lbs	
22/4-XX	22	4/7 STR BC	3.33mm/0.131"	23	PVC - Gray, White	305m/1000ft Box	7.8kgs/17lbs	
22/4-XX-500	22	4/7 STR BC	3.33mm/0.131"	23	PVC - Gray, White	152m/500ft Box	4.4kgs/10lbs	
22/4SOL-XX-500	22	4/SOL BC	3.05mm/0.12"	22	PVC - Black, Brown, White	152m/500ft Box	3.1kgs/7lbs	
22/4SOL-XX	22	4/SOL BC	3.05mm/0.12"	22	PVC - Brown, White	305m/1000ft Box	5.9kgs/13lbs	
22/6-XX	22	6/7 STR BC	3.76mm/0.148"	20	PVC - Gray, White	305m/1000ft Box	9kgs/20lbs	
22/6-GY-500	22	6/7 STR BC	3.76mm/0.148"	20	PVC - Gray	152m/500ft Box	4.5kgs/10lbs	
22/6SOL-WT	22	6/7 SOL BC	3.42mm/0.135"	20	PVC - White	305m/1000ft Box	9kgs/20lbs	
22/8-GY	22	8/7 STR BC	4.24mm/0.167"	23	PVC - Gray	305m/1000ft Box	11.8kgs/26lbs	
22/8-GY-500	22	8/7 STR BC	4.24mm/0.167"	23	PVC - Gray	152m/500ft Box	5.9kgs/13lbs	
22/10-500	22	10/7 STR BC	4.95mm/0.195"	42	PVC - White	152m/500ft Spool	8.8kgs/19.5lbs	
22/12-500	22	12/7 STR BC	5.0mm/0.197"	22	PVC - White	152m/500ft Box	10.2kgs/22.5lbs	
Non-Plenum - Riser Shielded								
Part Number	AWG	Conductors STR/SOL	Nom. OD mm/inch	CAP pF/FT	Jacket / Color	Packaged Length	Weight	
22/2SH-GY	22	2/7 STR BC	3.0mm/0.118"	35	PVC - Gray	305m/1000ft Box	4.7kgs/10.5lbs	
22/4SH-GY	22	4/7 STR BC	3.38mm/0.133"	42	PVC - Gray	305m/1000ft Box	7.5kgs/16.5lbs	
22/4SH-GY-500	22	4/7 STR BC	3.38mm/0.133"	42	PVC - Gray	152m/500ft Box	3.9kgs/8.5lbs	
22/6SH-XX	22	6/7 STR BC	3.81mm/0.15"	55	PVC - Gray, White	305m/1000ft Box	14kgs/31lbs	
22/6SH-500	22	6/7 STR BC	3.81mm/0.15"	55	PVC - Gray	152m/500ft Box	6.8kgs/15lbs	
22/8SH-XX	22	8/7 STR BC	4.19mm/0.165"	39	PVC - Gray, White	305m/1000ft Box	14.7kgs/32.5lbs	

Security & Alarm Plenum

Features		Compliance			Applications			
Stranded or Solid Bare Copper Conductors, Insulated Twisted Pair; UL Listed; Descending Feet and Zone/Outlet Jkt Markings ; Packaging: Spool or Box		Plenum: UL CMP CL2P/CL3P, c(UL) FT6 75C; UL 444; NEC Article 725; RoHS; 300V 75°			Low Voltage Security Systems Routed in Plenum Spaces; Intercom Systems; Sound/Audio Systems; Power-Limited Controls			
Plenum - UnShielded								
Part Number	AWG	Conductors STR/SOL	Nom. OD mm/inch	CAP pF/FT	Jacket / Color	Packaged Length	Weight	
22/2P	22	2/7 STR BC	3.0mm/0.12"	18	LS-PVC/White	305m/1000ft Box	5.9kgs/13lbs	
22/4P	22	4/7 STR BC	3.58mm/0.141"	23	LS-PVC/White	305m/1000ft Box	9.0kgs/20lbs	
22/4P-500	22	4/7 STR BC	3.58mm/0.141"	23	LS-PVC/White	152m/500ft Box	4.7kgs/10.5lbs	
22/6P	22	6/7 STR BC	4.06mm/0.16"	21	LS-PVC/White	305m/1000ft Spool	11.8kgs/26lbs	
22/6P-500	22	6/7 STR BC	4.06mm/0.16"	21	LS-PVC/White	152m/500ft Box	5.9kgs/13lbs	
22/8P	22	8/7 STR BC	4.57mm/0.167"	23	LS-PVC/White	305m/1000ft Spool	14.4kgs/32lbs	
22/12P	22	12/7 STR BC	5.4mm/0.213"	23	LS-PVC/White	305m/1000ft Spool	20.8kgs/46lbs	
Plenum - Shielded								
Part Number	AWG	Conductors STR/SOL	Nom. OD mm/inch	CAP pF/FT	Jacket / Color	Packaged Length	Weight	
22/2SHP	22	2/7 STR BC	3.15mm/0.124"	49	LS-PVC/White	305m/1000ft Spool	5.2kgs/11.5lbs	
22/4SHP	22	4/7 STR BC	3.93mm/0.155"	49	LS-PVC/White	305m/1000ft Spool	7.7kgs/17lbs	
22/4SHP-500	22	4/7 STR BC	3.93mm/0.155"	49	LS-PVC/White	152m/500ft Box	5kgs/11lbs	
22/6SHP	22	6/7 STR BC	4.11mm/0.162"	42	LS-PVC/White	305m/1000ft Spool	10.9kgs/24lbs	
22/6SHP-500	22	6/7 STR BC	4.11mm/0.162"	42	LS-PVC/White	152m/500ft Box	5.4kgs/12lbs	
22/8SHP	22	6/7 STR BC	4.65mm/0.183"	42	LS-PVC/White	305m/1000ft Spool	16.4kgs/33lbs	



Fire Alarm Cables

Factory is a leading manufacturer and global supplier of low voltage cables and connectivity accessories. These cables provide the highest quality, performance and value on the market today. Factory offers a wide variety of cables and accessories to accommodate most commercial/residential installations. This Line Card contains our standard stock items for Fire Alarm cables available at our USA warehouses. We have many other bulk cables that may be available through our USA warehouses including Private Label and OEM.

FPLR Riser Rated

Features	Compliance	Applications
Class 2 Circuits and Power Limited Fire Alarm applications. Solid Bare Copper Conductors, Insulated Twisted Pair; UL Listed; Descending Feet Jkt Markings	UL FPLR CL2R, c(UL); 18-16AWG; 760 FPLR, 800 CMR; 725 CL2R; 14-12AWG: FPLR, CL2R FT4; RoHS; 300V 60°C	Fire Power Limited Riser, Fire Protection Alarm, Monitor/Detection, Signal, Audio Circuits, Control Circuits, Notification & Initiating Circuits

Unshielded FPLR 300V 75°C

Part Number	AWG	Conductors	Nom. OD mm/inch	CAP pF/FT	Jacket / Color	Packaged Length	Weight
22/4FPLR	22	4 SOL BC	3.0mm/0.12"	21	PVC - Red	305m/1000ft Box	5.9kgs/13lbs
22/4FPLR-COIL	22	4 SOL BC	3.0mm/0.12"	21	PVC - Red	152m/500ft Coil Pack	2.5kgs/5.5lbs
22/4FPLR-500	22	4 SOL BC	3.0mm/0.12"	21	PVC - Red	152m/500ft Box	2.9kgs/6.5lbs
18/2FPLR-XX	18	2 SOL BC	3.8mm/0.151"	19.6	PVC - Red, White	305m/1000ft Spool	7.3kgs/16lbs
18/2FPLR-BOX	18	2 SOL BC	3.8mm/0.151"	19.6	PVC - Red	305m/1000ft Box	8.1kgs/18lbs
18/2FPLR-500	18	2 SOL BC	3.8mm/0.151"	19.6	PVC - Red	152m/500ft Spool	3.9kgs/8.5lbs
18/2FPLR-500-BOX	18	2 SOL BC	3.8mm/0.151"	19.6	PVC - Red	152m/500ft Box	8.6kgs/19lbs
18/4FPLR-XX	18	4 SOL BC	4.5mm/0.176"	21.7	PVC - Red, White	305m/1000ft Spool	13.3kgs/29.5lbs
18/4FPLR-BOX	18	4 SOL BC	4.5mm/0.176"	21.7	PVC - Red	305m/1000ft Box	13.3kgs/29.5lbs
18/4FPLR-500	18	4 SOL BC	4.5mm/0.176"	21.7	PVC - Red	152m/500ft Box	6.5kgs/14.5lbs
16/2FPLR-XX	16	2 SOL BC	4.4mm/0.172"	22.2	PVC - Red, Blue, Green, Yellow, White	305m/1000ft Spool	11.3kgs/25lbs
16/2FPLR-BOX	16	2 SOL BC	4.4mm/0.172"	22.2	PVC - Red	305m/1000ft Box	10.4kgs/23lbs
16/2FPLR-500	16	2 SOL BC	4.4mm/0.172"	22.2	PVC - Red	152m/500ft Box	6.3kgs/14lbs
14/2FPLR-XX	14	2 SOL BC	5.0mm/0.198"	22.9	PVC - Blue, Orange, Red White, Yellow	305m/1000ft Spool	16.8kgs/37lbs
14/2FPLR-XX-500	14	2 SOL BC	5.0mm/0.198"	22.9	PVC - Red, Yellow	152m/500ft Spool	9kgs/20lbs
14/4FPLR	14	4 SOL BC	5.9mm/0.233"	26.6	PVC - Red	305m/1000ft Spool	30.8kgs/68lbs
12/2FPLR	12	2 SOL BC	6.7mm/0.262"	38	PVC - Red	305m/1000ft Spool	23.8kgs/52.5lbs

Shielded FPLR 300V 75°C

Part Number	AWG	Conductors	Nom. OD mm/inch	CAP pF/FT	Jacket / Color	Packaged Length	Weight
18/2FPLR-SH	18	2 SOL BC	3.9mm/0.153"	61.6	PVC - Red	305m/1000ft Spool	7.2kgs/16lbs
18/4FPLR-SH	18	4 SOL BC	4.6mm/0.178"	48.8	PVC - Red	305m/1000ft Spool	10.9kgs/24lbs
16/2FPLR-SH-XX	16	2 SOL BC	4.4mm/0.172"	22.2	PVC - Red, Orange, White	305m/1000ft Spool	12.2kgs/27lbs
16/4FPLR-SH	16	4 SOL BC	5.1mm/0.201"	21.9	PVC - Red	305m/1000ft Spool	23.1kgs/51lbs
14/2FPLR-SH	14	2 SOL BC	5.0mm/0.198"	22.9	PVC - Red	305m/1000ft Spool	15.9kgs/35lbs
14/4FPLR-SH	14	4 SOL BC	5.1mm/0.201"	21.9	PVC - Red	305m/1000ft Spool	20.5kgs/49lbs

FPLP Plenum Rated

Features	Compliance	Applications
Stranded or Solid Bare Copper Conductors, Insulated Twisted Pair; UL Listed; Descending Feet and Zone/Outlet Jkt Markings	UL FPLP CL2P, c(UL); 18-16AWG; 760 FPLP, 800 CMP; 725 CL2P; 14-12AWG: FPLP, CL2P FT6; RoHS; 300V 60°C	Fire Power Limited Plenum, Fire Protection Alarm, Monitor/Detection, Signal, Audio Circuits, Control Circuits, Notification & Initiating Circuits

Unshielded FPLP 300V 75°C

Part Number	AWG	Conductors	Nom. OD mm/inch	CAP pF/FT	Jacket / Color	Packaged Length	Weight
18/2FPLP	18	2 SOL BC	3.6mm/0.143"	23.7	LS-PVC - Red	305m/1000ft Spool	7.7kgs/17lbs
18/4FPLP-500	18	4 SOL BC	4.2mm/0.166"	27.9	LS-PVC - Red	152m/500ft Spool	6.4kgs/14lbs
18/4FPLP	18	4 SOL BC	4.2mm/0.166"	27.9	LS-PVC - Red	305m/1000ft Spool	13.8kgs/30.5lbs
16/2FPLP-XX	16	2 SOL BC	4.3mm/0.172"	24.7	LS-PVC - Red, Blue, Green, White, Yellow	305m/1000ft Spool	11.8kgs/26lbs
16/2FPLP-500	16	2 SOL BC	4.3mm/0.172"	24.7	LS-PVC - Red	152m/500ft Spool	5.9kgs/13lbs
16/4FPLP	16	4 SOL BC	5.1mm/0.201"	30.8	LS-PVC - Red	305m/1000ft Spool	19.7kgs/43.5lbs
16/4FPLP-250	16	4 SOL BC	5.1mm/0.201"	30.8	LS-PVC - Red	76m/250ft Spool	13.3kgs/29.5lbs
14/2FPLP-XX	14	2 SOL BC	5.23mm/0.206"	24.6	LS-PVC - Red, Blue, Green, Orange, White, Yellow	305m/1000ft Spool	17kgs/37.5lbs
14/2FPLP-500	14	2 SOL BC	5.23mm/0.206"	24.6	LS-PVC - Red	152m/500ft Box	8.6kgs/19lbs
14/4FPLP	14	4 SOL BC	6.1mm/0.242"	29.9	LS-PVC - Red	305m/1000ft Spool	30.4kgs/67lbs
12/2FPLP	12	2 SOL BC	6.0mm/0.238"	46	LS-PVC - Red	305m/1000ft Spool	24.7kgs/54.5lbs
12/2FPLP-STR	12	2 STR BC	6.0mm/0.238"	46	LS-PVC - Red	305m/1000ft Spool	24.7kgs/54.5lbs

Shielded FPLP 300V 75°C

Part Number	AWG	Conductors	Nom. OD mm/inch	CAP pF/FT	Jacket / Color	Packaged Length	Weight
18/2FPLP-SH	18	2 SOL BC	3.6mm/0.143"	23.7	LS-PVC - Red	305m/1000ft Spool	7.7kgs/17lbs
18/4FPLP-SH	18	4 SOL BC	4.2mm/0.166"	27.9	LS-PVC - Red	305m/1000ft Spool	15.2kgs/33.5lbs
16/2FPLP-SH	16	2 SOL BC	4.3mm/0.172"	24.7	LS-PVC - Red	305m/1000ft Spool	11.8kgs/26lbs
16/2FPLP-SH-WT	16	2 SOL BC	4.3mm/0.172"	24.7	LS-PVC - White	305m/1000ft Spool	11.8kgs/26lbs
16/4FPLP-SH	16	4 SOL BC	5.1mm/0.201"	30.8	LS-PVC - Red	305m/1000ft Spool	23.3kgs/51.5lbs
14/2FPLP-SH	14	2 SOL BC	5.2mm/0.206"	24.6	LS-PVC - Red	305m/1000ft Spool	17kgs/37.5lbs



Automation, Lighting and Control Cables

Factory is a leading manufacturer and global supplier of low voltage cables and connectivity accessories. These cables provide the highest quality, performance and value on the market today. Manufacturer offers a wide variety of cables and accessories to accommodate most commercial/residential installations. This Line Card contains standard stock items for Lighting and Control cables available at our USA warehouses. We have many other bulk cables that may be available through our USA warehouses including Private Label and OEM.

Lutron* System Compatible Cables							
Features		Compliance			Applications		
Manufactured to exacting specifications. For use with Lutron® and other control systems. UL Plenum and Non-Plenum jacket options. Descending FT and Zone/Outlet Jkt Markings; Spool or Box		UL CM CL2/3, c(UL) FT4 75C; UL CMP CL3P c(UL) FT6 75C; 300V; RoHS; UL 444			Touch panels, keypads, tuner, audio processors and other control applications. Compatible with Lutron® control systems.		
Part Number	Construction	Nom. OD	Jacket	Installation Rated	Packaged Length	Weight	
LUT-BLUE	2C/18AWG BC Str w/Ground + 1C/18AWG BC Str + 2C/22AWG BC Str Shielded	8.8mm/0.347"	PVC -Blue w/ Dark Blue Stripe	UL CM	152m/500ft Spool	18kgs/39lbs	
LUT-BLUE-P	2C/12AWG BC Str w/Ground + 1C/18AWG BC Str + 2C/22AWG BC Str Shielded	8.8mm/0.347"	LS-PVC - White w/Blue Stripe	UL CMP	152m/500ft Spool	19.8kgs/44lbs	
LUT-GREEN-P	2C/18AWG BC Str w/Ground + 2C/22AWG BC Str Twisted Pair, Shielded	6.7mm/0.263"	LS-PVC - White w/Green Stripe	UL CMP	305m/1000ft Spool	17kgs/37lbs	
LUT-GREEN	2C/18AWG BC Str w/Ground + 2C/22AWG BC Str Twisted Pair, Shielded	6.35mm/0.25"	PVC - Blue w/Green Stripe	UL CM	305m/1000ft Spool	17.4kgs/38lbs	
LUT-GREEN-HDBX	2C/18AWG BC Str w/Ground + 2C/22AWG BC Str Twisted Pair, Shielded	6.35mm/0.25"	PVC - Blue w/Green Stripe	UL CM	305m/1000ft HD Box	17.7kgs/38lbs	
LUT-GREEN-500	2C/18AWG BC Str w/Ground + 2C/22AWG BC Str Twisted Pair, Shielded	6.35mm/0.25"	PVC - Blue w/Green Stripe	UL CM	152m/500ft Spool	11.2kgs/25lbs	
LUT-QS	2C/16AWG BC Str w/Ground + 2C/22AWG BC Str Twisted Pair, Shielded	6.4mm/0.252"	PVC - White	UL CM	152m/500ft Spool	11.2kgs/25lbs	
LUT-QS-1000	2C/16AWG BC Str w/Ground + 2C/22AWG BC Str Twisted Pair, Shielded	6.4mm/0.252"	PVC - White	UL CM	305m/1000ft Spool	22.4kgs/49lbs	
LUT-QS-P	2C/16AWG BC Str w/Ground + 2C/22AWG BC Str Twisted Pair, Shielded	7.6mm/0.30"	LS-PVC - White	UL CMP	152m/500ft Spool	10kgs/22lbs	
LUT-QS-P-1000	2C/16AWG BC Str w/Ground + 2C/22AWG BC Str Twisted Pair, Shielded	7.6mm/0.30"	LS-PVC - White	UL CMP	305m/1000ft Spool	20kgs/44lbs	
Crestron* System Compatible Cables							
Features		Compliance			Applications		
Compare to Crestnet® bus cable. UL Plenum and Non-Plenum jacket options. Descending FT and Zone/Outlet Jkt Markings.		UL CM CL2/3, c(UL) FT4 75C; UL CMP CL3P c(UL) FT6 75C; RoHS			Touch panels, keypads, tuner, audio processors and other control applications. Compatible with Crestron® control systems.		
Part Number	Construction	Nom. OD	Jacket	Installation Rated	Packaged Length	Weight	
CREST-1	2C/18AWG BC Str w/Ground + 2C/22AWG BC Str Twisted Pair, Shielded	6.3mm/0.248"	PVC - Teal w/Yellow Stripe	UL CM	305m/1000ft Spool	20kgs/44lbs	
CREST-1-P	2C/18AWG BC Str w/Ground + 2C/22AWG BC Str FEP Twisted Pair, Shielded	5.7mm/0.224"	LS-PVC - Teal w/Yellow Stripe	UL CMP	305m/1000ft Spool	20kgs/44lbs	
KNX Cables							
Compliance		Applications					
ETL, EN50575 Dca-s1,d1,a1 EuroClass; IEC 60332-1-2; IEC 60754-1,2; IEC 61034-1,2; IEC 61156; RoHS		KNX/EIB Field Bus Cable. Control for Lighting, HVAC and Security.					
Part Number	Construction	Nom. OD	Jacket	Installation Rated	Packaged Length	Weight	
EIB-BUS-2X2-LSZH	2-Pair 20AWG (0.8mm) SOL BC, AL Foil Shield	6.3mm/0.248"	LSZH - Green	Dca	305m/1000ft Spool	18.5kgs/40.7lbs	
Universal Control Cables							
Features		Compliance			Applications		
Universal Control Cables are ideal cable solution for Control4, AMX, and other control systems. UL Listed. Descending FT and Zone/Outlet Jkt Markings.		UL CM CL2/3, c(UL) FT4 75C; UL CMP CL3P c(UL) FT6 75C; 300V; RoHS; UL 444			Touch panels, keypads, tuner, audio processors and other control applications. General purpose analog audio, digital audio, RS-232C.		
Part Number	Construction	Nom. OD	Jacket	Installation Rated	Packaged Length	Weight	
CTRL-1-D	2C/18AWG BC Str w/Ground + 2C/22AWG BC Str Twisted Pair, Shielded	6.8mm	PVC - Yellow w/Red Stripe	UL CM / Dca	305m/1000ft Spool	18.4kgs/40.5lbs	
CTRL-2-D	2C/16AWG BC Str w/Ground + 2C/22AWG BC Str Twisted Pair, Shielded	7.0mm	PVC - Yellow	UL CM / Dca	152m/500ft Spool	10.1kgs/22lbs	
Vantage Compatible Cables							
Features		Compliance			Applications		
Vantage compatible lighting/control. 600V rated. Riser rated. Descending FT and Zone/Outlet Jkt Markings.		UL CMR CL2R/CL3R, c(UL) FT4 75C; 600V; RoHS			Lighting bus control. Speaker level audio.		
Part Number	Construction	Nom. OD	Jacket	Installation Rated	Packaged Length	Weight	
VANTAGE-16/2	2C/16AWG BC Str, 600V rated	8.0mm/0.315"	PVC - Purple w/Yellow Stripe	UL CMR	305m/1000ft Spool	22.5kgs/50lbs	
Access Control Cables							
Features		Compliance			Applications		
Access Control Composite Cables. Overall Jacket. Cost effective security solution. UL Listed. Descending FT and Zone/Outlet Jkt Markings.		UL CM CL2/3, c(UL) FT4 75C; 300V;			UL CM CL2/3, c(UL) FT4 75C; 300V; UL CMP CL3P c(UL) FT6 75C; RoHS		
Part Number	Construction	Nom. OD	Jacket	Installation Rated	Packaged Length	Weight	
ACC-1	2C/22AWG Str BC + 4C/22AWG Str BC + 6C/22AWG Str BC, Shielded + 4C/18AWG Str BC	12.5mm/0.492"	PVC - Yellow	UL CM	152m/500ft Spool	29kgs/64lbs	
ACC-1-GN	2C/22AWG Str BC + 4C/22AWG Str BC + 6C/22AWG Str BC, Shielded + 4C/18AWG Str BC	12.5mm/0.492"	PVC - Green	UL CM	152m/500ft Spool	29kgs/64lbs	
ACC-1-GN-1000	2C/22AWG Str BC + 4C/22AWG Str BC + 6C/22AWG Str BC, Shielded + 4C/18AWG Str BC	12.5mm/0.492"	PVC - Green	UL CM	305m/1000ft Spool		
ACC-1-PL	2C/22 AWG + 4C/22 AWG + 4C/18 AWG + 6C/22 AWG Shielded - Bundled- UL CMP JKT	10.5mm/0.415"	LS-PVC - Yellow	UL CMP	152m/500ft Spool	26.7kgs/59lbs	
DMX							
Features		Compliance			Applications		
DMX Lighting Control Cables. Supports USITT Standards for DMX512 and RS485 120Ω impedance. Low Capacitance. Descending feet and Zone/Outlet Jkt Markings		UL CM CL2/3, c(UL) FT4 75C; ANSI/TIA 568.2-D; RoHS			UL CM CL2/3, c(UL) FT4 75C; ANSI/TIA 568.2-D; RoHS		
Part Number	Construction	Nom. OD	Jacket	Installation Rated	Packaged Length	Weight	
DX24/2-BK	DMX512/RS485 120Ω - 2C/24AWG STR TC (7x32) FPE (Blue/White), Dual Foil/Braid Shield w/Drain	5.82mm/0.229"	PVC - Black	UL CM	305m/1000ft Spool	11.5kgs/25lbs	
DX24/4-BK	DMX512/RS485 120Ω - 4C/24AWG STR TC (7x32) FPE (Blue/White), Dual Foil/Braid Shield w/Drain	8.28mm/0.326"	PVC - Black	UL CM	305m/1000ft Spool	13.8kgs/30lbs	
LED Strip Lighting Cables							
Features		Compliance			Applications		
LED RGB and RGB-TW lighting cables. UL Listed. Descending M/FT and Zone/Outlet Jkt Markings.		UL CMR CL2/3R, c(UL) FT4 75C; 300V; RoHS; UL 444			LED Strip Lighting Cable RGB and 6-Pin RGB-TW. General purpose speaker level. Class 2 and 3 power. 70V commercial audio.		
Part Number	Construction	Nom. OD	Jacket	Installation Rated	Packaged Length	Weight	
14/6-RGBTW-BK	6C/14 AWG 41-Strand BC, LED RGB-TW Cable, Unshielded, UL CL2/3R FT4	8.45mm/0.333"	PVC - Black	UL CL3R	152m/500ft Spool	28.5kgs/63lbs	
16/6-RGBTW-BK	6C/16 AWG 26-Strand BC, LED RGB-TW Cable, Unshielded, UL CMR CL2/3R FT4	7.0mm/0.276"	PVC - Black	UL CMR	152m/500ft Spool	18.4kgs/40.5lbs	

*Lutron®, Crestron® and other trade names listed are registered trademarks of their respective entities. Manufacturer and seller are not affiliated and disclaim the proprietary interest in the marks and names of others.



Direct Burial Cables

Factory is a leading manufacturer and global supplier of low voltage cables and connectivity accessories. These cables provide the highest quality, performance and value on the market today. Manufacturer offers a wide variety of cables and accessories to accommodate most commercial/residential installations. This Line Card contains our standard stock items for Direct Burial cables available at our USA warehouses. We have many other bulk cables that may be available through our USA warehouses including Private Label and OEM.

Landscape / Direct Burial ProSeries Speaker Cables

Professionals Choice for All High Performance Landscape and Outdoor Speaker Systems. Retains Flexibility in All Outdoor Environments. ProSeries Landscape/Direct Burial cables feature LLDPE (Linear Low-Density Polyethylene) jackets that provide superior performance and durability over PVC or standard PE jacket cables. These cables also are UV Sun Resistant and retains flexible performance in both hot and cold environments. Recommended by Leading Speaker Brands.

Features			Compliance		Applications		
High Strand Count Oxygen Free Copper; Unshielded; Insulated twisted pair; LLDPE Jacket; Waterproof; Gel Filled; Superior Durability and Longevity; Rodent Resistant; UV Sun Resistant; Descending Feet Markings			UL 444, NEC CL3, RoHS		Professional Outdoor Speaker Systems; Direct Burial Waterproof; Audio/Security/Control; Class 2/3 Low Voltage Power; Installs in Wet Environments; Commercial/Residential/Institutional		
Part Number	AWG	Conductors	Nom. OD mm/inch	CAP pF/FT	Installation Rated	Packaged Length	Weight
14/2SP-DB-500	14	2/105 Str OFC	6.4mm/0.252"	Gel Fill LLDPE - Black	Direct Burial/UV Outdoor	152m/500ft Spool	11.7kgs/26lbs
14/4SP-DB-GEL	14	4/105 Str OFC	8.2mm/0.323"	Gel Fill LLDPE - Black	Direct Burial/UV Outdoor	305m/1000ft Spool	40kgs/88lbs
14/4SP-DB-GEL-500	14	4/105 Str OFC	8.2mm/0.323"	Gel Fill LLDPE - Black	Direct Burial/UV Outdoor	152m/500ft Spool	21kgs/46lbs
12/2SP-DB	12	2/65 Str OFC	8.3mm/0.326"	LLDPE - Black	Direct Burial/Outdoor	305m/1000ft Spool	32kgs/71 lbs

Direct Burial Multipurpose Security, Audio/Sound, Control

Features			Compliance		Applications		
LLDPE jacket superior to PVC jacket direct burial. Insulated Twisted Pair; Water Block Tape for moisture protection; Descending Feet and Zone/Outlet Jkt Markings ; Packaging: Spool			UL 444, NEC CL3, RoHS		Direct Burial; Outdoor; Outdoor Speaker; Low Voltage Class 2/3, Security Systems; Intercom Systems; Speaker/Audio Systems; Power-Limited Controls		

Direct Burial - UnShielded

Part Number	AWG	Conductors	Nom. OD mm/inch	CAP pF/FT	Installation Rated	Packaged Length	Weight
18/2DB-500	18	2/16 STR BC	5.2mm/0.204"	WBT LLDPE-Black	Direct Burial/UV Outdoor	152m/500ft Spool	5.8kgs/13lbs
16/2DB	16	2/65 STR BC	5.5mm/0.215"	WBT LLDPE-Black	Direct Burial/UV Outdoor	305m/1000ft Spool	14.6kgs/32lbs
16/4DB	16	4/65 STR BC	6.8mm/0.267"	WBT LLDPE-Black	Direct Burial/UV Outdoor	305m/1000ft Spool	25kgs/55lbs
16/4DB-500	16	4/65 STR BC	6.8mm/0.267"	WBT LLDPE-Black	Direct Burial/UV Outdoor	152m/500ft Spool	12.2kgs/27lbs
14/4DB	14	4/105 STR BC	8.2mm/0.322"	WBT LLDPE-Black	Direct Burial/UV Outdoor	305m/1000ft Spool	39kg/76lbs
14/4DB-500	14	4/105 STR BC	8.2mm/0.322"	WBT LLDPE-Black	Direct Burial/UV Outdoor	152m/500ft Spool	19.5kg/43lbs

Direct Burial - Shielded

Part Number	AWG	Conductors	Nom. OD mm/inch	CAP pF/FT	Installation Rated	Packaged Length	Weight
18/2SHDB	18	2/16 STR BC	5.4mm/0.212"	WBT LLDPE-Black	Direct Burial/UV Outdoor	305m/1000ft Spool	12kgs/26lbs
18/4SHDB	18	2/16 STR BC	6.2mm/0.244"	WBT LLDPE-Black	Direct Burial/UV Outdoor	305m/1000ft Spool	18.5kgs/41lbs
18/6SHDB	18	2/16 STR BC	7.2mm/0.283"	WBT LLDPE-Black	Direct Burial/UV Outdoor	305m/1000ft Spool	24.7kgs/54lbs
16/2SHDB	16	2/65 STR BC	6.3mm/0.248"	WBT LLDPE-Black	Direct Burial/UV Outdoor	305m/1000ft Spool	16kgs/35lbs
16/2SHDB-500	16	2/65 STR BC	6.3mm/0.248"	WBT LLDPE-Black	Direct Burial/UV Outdoor	152m/500ft Spool	8.5kgs/19lbs
14/2SHDB	14	2/105 STR BC	7.2mm/0.283"	WBT LLDPE-Black	Direct Burial/UV Outdoor	305m/1000ft Spool	20.6kgs/45lbs
14/2SHDB-500	14	2/105 STR BC	7.2mm/0.283"	WBT LLDPE-Black	Direct Burial/UV Outdoor	152m/500ft Spool	10.7kgs/24lbs
12/2SHDB	12	2/65 STR BC	8.5mm/0.334"	WBT LLDPE-Black	Direct Burial/UV Outdoor	305m/1000ft Spool	32.5kgs/72lbs

Category/LAN Direct Burial

Cat6 Direct Burial cables feature LLDPE (Linear Low-Density Polyethylene) jackets that provide superior performance over PVC or standard PE jacket cables. These cables also are UV Sun Resistant and retain flexible performance in both hot and cold environments.

Features			Compliance		Applications		
LLDPE Jacket, Moisture Protection and UV Sun Resistant; Descending FT and Zone/Outlet Jkt Markings; Limited Lifetime Warranty			ANSI/TIA 568.2-D; ISO/IEC 11801; IEEE 802.3bt; RoHS		High performance IT, LAN & Ethernet installations. Suitable for use in all outdoor and direct burial structured wiring systems according to cable classification. PoE Compliant		
Part Number	AWG	Conductors/Insulation	Nom. OD mm/inch	CAP pF/FT	Installation Rated	Packaged Length	Weight
Cat6a:							
CAT6A-U/FTP-DB	4pr U/FTP	23AWG SOL BC / SFPE	7.4mm/0.291"	LLDPE - Black	Direct Burial/UV Outdoor	305m/1000ft Spool	17kgs/38lbs
Cat6:							
CAT6-DB	4pr U/UTP	23AWG SOL BC / HDPE	7.0mm/0.275"	LLDPE - Black	Direct Burial/UV Outdoor	305m/1000ft Spool	16kgs/35lbs
CAT6SH-DB	4pr F/UTP	23AWG SOL BC / HDPE	7.50mm/0.295"	LLDPE - Black	Direct Burial/UV Outdoor	305m/1000ft Spool	19kgs/42lbs
CAT6SH-OUT	4pr F/UTP	23AWG SOL BC / HDPE	7.50mm/0.295"	UV Sun Res PE - Black	UV Outdoor	305m/1000ft Spool	21kgs/46lbs
Cat5e:							
CAT5E-25PR-DB	25pr U/UTP Gel	24AWG SOL BC / HDPE	12.0mm/0.472"	LLDPE - Black	Direct Burial/UV Outdoor	305m/1000ft Spool	66.7kgs/147lbs
CAT5E-DB	4pr U/UTP	24AWG SOL BC / HDPE	5.3mm/0.208"	LLDPE - Black	Direct Burial/UV Outdoor	305m/1000ft Spool	10kgs/22lbs
CAT5E-DB-500	4pr U/UTP	24AWG SOL BC / HDPE	5.3mm/0.208"	LLDPE - Black	Direct Burial/UV Outdoor	152m/500ft Spool	5.3kgs/12lbs
CAT5E-SH-DB	4pr F/UTP	24AWG SOL BC / HDPE	6.5mm/0.256"	LLDPE - Black	Direct Burial/UV Outdoor	305m/1000ft Spool	15.8kgs/35lbs



Electrical Low Voltage Cables

Factory is a leading manufacturer and global supplier of low voltage cables and connectivity accessories. These cables provide the highest quality, performance and value on the market today. Factory offers a wide variety of cables and accessories to accommodate most commercial/residential installations. This Line Card contains our standard stock items for Electrical Low Voltage cables available at our USA warehouses. We have many other bulk cables that may be available through our USA warehouses.

Lighting/Ballast Control Cables

Features			Compliance		Applications		
Low Voltage LED Dimmer Cable. PVC insulated Violet/Gray conductors, twisted pair. 18AWG: Limit to 300ft runs. Riser and Plenum options.			NEC: CMR 75°C, CMP 75°C; CEC: FT4 60°C, FT6 60°C; NEC 725, 800. UL 444. RoHS. 300V		Low Voltage 0-10V ballast wiring and connections. Low Voltage security & control. Power Limited Control Class 2/Class 3.		
Part Number	AWG	Conductors	Nom. OD mm/inch	Jacket / Color	Installation Rated	Packaged Length	Weight
18/2DC-WT-1000	18	2 SOL BC, TP	4mm/0.161"	PVC - White	CMR FT4	305m/1000ft Spool	8.1kgs/18lbs
18/2DC-P-WT-1000	18	2 SOL BC, TP	3.8mm/0.147"	LS-PVC - White	CMP FT6	305m/1000ft Spool	8.1kgs/18lbs
18/2DC-P-WT-500	18	2 SOL BC, TP	3.8mm/0.147"	LS-PVC - White	CMP FT6	152m/500ft Spool	4kgs/9lbs
16/2DC-WT-1000	16	2 SOL BC, TP	4.3mm/0.168"	PVC - White	CMR FT4	305m/1000ft Spool	11.8kgs/26lbs
16/2DC-P-WT-1000	16	2 SOL BC, TP	4.3mm/0.168"	LS-PVC - White	CMP FT6	305m/1000ft Spool	11.8kgs/26lbs

Landscape Wire

Features			Compliance		Applications		
Low Voltage Landscape Lighting. Zip Construction.			UL Subject 1493, ULECC 150V AC ; c(UL) ULEC/LVLL; 150V 60°C		Low Voltage landscape lighting, outdoor accent lighting, security lighting. Direct Burial		
Direct Burial - UnShielded							
Part Number	AWG	Conductors	Nom. OD mm/inch	Jacket / Color	Installation Rated	Packaged Length	Weight
16/2L-500	16	2 Str BC, Zip	8.1mm/0.320"	UV PVC - Black	Outdoor/Direct Burial	152m/500ft Spool	9.5kgs/21lbs
14/2L-500	14	2 Str BC, Zip	8.9mm/0.352"	UV PVC - Black	Outdoor/Direct Burial	152m/500ft Spool	16.8kgs/37lbs
12/2L-500	12	2 Str BC, Zip	9.8mm/0.385"	UV PVC - Black	Outdoor/Direct Burial	152m/500ft Spool	17.7kgs/39lbs
10/2L-500	10	2 Str BC, Zip	11.1mm/0.437"	UV PVC - Black	Outdoor/Direct Burial	152m/500ft Spool	24kgs/53lbs

Thermostat Cables

Features			Compliance		Applications		
Thermostat Wire. Solid Soft Drawn Copper Conductors per ASTM B-3. Polypropylene Insulated. UL 13 CL2R/CL2P. Brown or White Jackets			UL 13 Type CL2R, CMR, c(UL) FT4; Plenum: UL CL2P, CMP, c(UL) FT6; NEC 725; UL 1685, 1666; RoHS; 150V 60°C.		Thermostats, HVAC controls, Bell & Alarm systems, Signal Systems. Power-Limited Circuits Class 2.		
Part Number	AWG	Conductors	Nom. OD mm/inch	Jacket / Color	Installation Rated	Packaged Length	Weight
20/2T-500	20	2 SOL BC	3.2mm/0.126"	UV PVC - Brown	UL CL2R	152m/500ft Spool	2.2kgs/5lbs
20/3T-500	20	3 SOL BC	3.4mm/0.133"	UV PVC - Brown	UL CL2R	152m/500ft Spool	3kgs/6.5lbs
20/4T	20	4 SOL BC	3.7mm/0.146"	UV PVC - Brown	UL CL2R	76m/250ft Spool	1.8kgs/4lbs
20/5T-250	20	5 SOL BC	3.8mm/0.150"	UV PVC - Brown	UL CL2R	76m/250ft Spool	2.2kgs/5lbs
18/2T	18	2 SOL BC	3.6mm/0.142"	UV PVC - Brown	UL CL2R	152m/500ft Spool	3.1kgs/7lbs
18/2T-WT	18	2 SOL BC	3.6mm/0.142"	UV PVC - Brown	UL CL2R	152m/500ft Spool	3.1kgs/7lbs
18/3T	18	3 SOL BC	3.8mm/0.151"	UV PVC - Brown	UL CL2R	152m/500ft Spool	4.9kgs/11lbs
18/3T-WT	18	3 SOL BC	3.8mm/0.151"	UV PVC - Brown	UL CL2R	152m/500ft Spool	4.9kgs/11lbs
18/4T	18	4 SOL BC	4.2mm/0.165"	UV PVC - Brown	UL CL2R	76m/250ft Spool	2.8kgs/6.3lbs
18/4T-WT	18	4 SOL BC	4.2mm/0.165"	UV PVC - Brown	UL CL2R	76m/250ft Spool	2.8kgs/6.3lbs
18/5T	18	5 SOL BC	4.6mm/0.181"	UV PVC - Brown	UL CL2R	76m/250ft Spool	3.4kgs/7.5lbs
18/5T-WT	18	5 SOL BC	4.6mm/0.181"	UV PVC - Brown	UL CL2R	76m/250ft Spool	3.4kgs/7.5lbs
18/5T-500	18	5 SOL BC	4.6mm/0.181"	UV PVC - Brown	UL CL2R	152m/500ft Spool	6.8kgs/15lbs
18/6T	18	6 SOL BC	5.0mm/0.198"	UV PVC - Brown	UL CL2R	76m/250ft Spool	4kgs/9lbs
18/6T-WT	18	6 SOL BC	5.0mm/0.198"	UV PVC - Brown	UL CL2R	76m/250ft Spool	4kgs/9lbs
18/6T-500	18	6 SOL BC	5.0mm/0.198"	UV PVC - Brown	UL CL2R	152m/500ft Spool	8.1kgs/18lbs
18/6T-P-WT	18	6 SOL BC	5.0mm/0.198"	LS-PVC - White	UL CL2P	76m/250ft Spool	4.7kgs/10.5lbs
18/7T	18	7 SOL BC	5.0mm/0.198"	UV PVC - Brown	UL CL2R	76m/250ft Spool	4.6kgs/10.25lbs
18/7T-WT	18	7 SOL BC	5.0mm/0.198"	UV PVC - Brown	UL CL2R	76m/250ft Spool	4.6kgs/10.25lbs
18/8T	18	8 SOL BC	5.5mm/0.215"	UV PVC - Brown	UL CL2R	76m/250ft Spool	5.3kgs/11.8lbs
18/8T-WT	18	8 SOL BC	5.5mm/0.215"	UV PVC - White	UL CL2R	76m/250ft Spool	5.3kgs/11.8lbs
18/8T-P-WT	18	8 SOL BC	5.5mm/0.215"	LS-PVC - White	UL CL2P	76m/250ft Spool	6.1kgs/13.5lbs
18/10T	18	10 SOL BC	5.6mm/0.222"	UV PVC - Brown	UL CL2R	76m/250ft Spool	6.5kgs/14.5lbs
18/10T-WT	18	10 SOL BC	5.6mm/0.222"	UV PVC - White	UL CL2R	76m/250ft Spool	6.5kgs/14.5lbs

Ground Wire THHN/THWN

Features			Compliance		Applications		
THHN / THWN (Thermoplastic High-Heat Nylon / Thermoplastic Heat-Water Resistant Nylon).			UL-83, UL-1063; VW1, FT1; ASTM-B3, B787, B8; RoHS; 600V 90°C Dry / 75°C wet.		General purpose wiring for appliances, control circuits. Wiring in dry and wet locations.		
Direct Burial - UnShielded							
Part Number	AWG	Conductors	Nom. OD mm/inch	Jacket / Color	Installation Rated	Packaged Length	Weight
GW-10-GN	10	1 SOL BC, PVC	3.8mm/0.150"	UV Nylon - Green	UL 83	152m/500ft Spool	8.1kgs/18lbs
GW-12-GN	12	1 SOL BC, PVC	3.1mm/0.122"	UV Nylon - Green	UL 83	152m/500ft Spool	5.4kgs/12lbs
GW-14-GN	14	1 SOL BC, PVC	2.5mm/0.105"	UV Nylon - Green	UL 83	152m/500ft Spool	3.6kgs/8lbs



Multi-Purpose - Audio, Communication & Control Cables

Factory is a leading manufacturer and global supplier of low voltage cables and connectivity accessories. These cables provide the highest quality, performance and value on the market today. Factory offers a wide variety of cables and accessories to accommodate most commercial/residential installations. This Line Card contains our standard stock items for Multi-Purpose Audio/Sound, Communication & Control cables available at our USA warehouses. We have many other bulk cables that may be available through our USA warehouses including Private Label and OEM.

Analog Audio Cables						
Features		Compliance		Applications		
Balanced line level audio and control. Superior signal-to-noise ratio. Riser rated. Descending FT and Zone/Outlet Jkt Markings. Tangle-Free Reellex II Box.		UL CMR CL2R/CL3R, c(UL) FT4; RoHS; Low Voltage & Power Limited Systems; 300V 75°C		High performing audio and control distribution. Permanent or Semi-Permanent Installations. Microphone/Intercom Distribution. Sound/Audio Systems. Security and Power-Limited Control Controls.		
Part Number	Construction	Nom. OD	CAP pF/FT	Jacket / Color	Packaged Length	Weight
22/2ESH	2C/22AWG BC Str Twisted Pair w/Drain, Shielded	3.4mm/0.134"	PVC - Gray	UL CMR	305m/1000ft Box	6.5kgs/14lbs
22/4EPSH	(2) Pair 22AWG BC Str Twisted Pair w/Drain, Each Pair Shielded	4.3mm/0.169"	PVC - Gray	UL CMR	305m/1000ft Box	10.9kgs/24lbs

Multi-Purpose Non-Plenum						
Features		Compliance		Applications		
Stranded or Solid Bare Copper Conductors, Insulated Twisted Pair; UL Listed; Descending Feet and Zone/Outlet Jkt Markings; Packaging: Spool, Box		UL CMR CL2R/CL3R, c(UL) FT4; UL 444; NEC 725, 800; RoHS; Low Voltage & Power Limited Systems; 300V 75°C		Low Voltage Security & Control; Intercom Systems; Sound/Audio Systems; 70V Speaker; Power-Limited Controls Class 2 and Class 3		

Non-Plenum - Riser Unshielded							
Part Number	AWG	Conductors	Nom. OD mm/inch	CAP pF/FT	Jacket / Color	Packaged Length	Weight
18/2COIL-GY	18	2/16 STR BC	4.4mm/0.16"	20	PVC - Gray	152m/500ft Coil	4kgs/9lbs
18/2-GY	18	2/16 STR BC	4.4mm/0.16"	20	PVC - Gray	305m/1000ft Box	9.5kgs/21lbs
18/2-GY-500	18	2/16 STR BC	4.4mm/0.16"	20	PVC - Gray	152m/500ft Box	4.6kgs/10.3lbs
18/2-WT	18	2/16 STR BC	4.4mm/0.16"	20	PVC - White	305m/1000ft Box	9.5kgs/21lbs
18/2-WT-500	18	2/16 STR BC	4.4mm/0.16"	20	PVC - White	152m/500ft Box	4.6kgs/10.3lbs
18/2COIL-WT	18	2/16 STR BC	4.4mm/0.16"	20	PVC - White	152m/500ft Box	4kgs/9lbs
18/4-GY-HDBX	18	4/16 STR BC	5.1mm/0.192"	23	PVC - Gray	305m/1000ft Heavy Duty Box	15kgs/33lbs
18/4-GY	18	4/16 STR BC	5.1mm/0.192"	23	PVC - Gray	305m/1000ft Box	14.5kgs/32lbs
18/4-GY-500	18	4/16 STR BC	5.1mm/0.192"	23	PVC - Gray	152m/500ft Box	8.2kgs/18lbs
18/4-WT	18	4/16 STR BC	5.1mm/0.192"	23	PVC - White	305m/1000ft Box	15.9kgs/35lbs
18/4-WT-500	18	4/16 STR BC	5.1mm/0.192"	23	PVC - White	152m/500ft Box	8.2kgs/18lbs
18/6-GY	18	6/16 STR BC	5.6mm/0.221"	21	PVC - Gray	305m/1000ft Spool	25kgs/55lbs
18/6-GY-500	18	6/16 STR BC	5.6mm/0.221"	21	PVC - Gray	152m/500ft Box	12.2kgs/27lbs
16/2-GY	16	2/26 STR BC	5.1mm/0.20"	23	PVC - Gray	305m/1000ft Box	13.1kgs/29lbs
16/2-GY-SPL	16	2/26 STR BC	5.1mm/0.20"	23	PVC - Gray	305m/1000ft Spool	13.5kgs/29lbs
16/4-GY	16	4/26 STR BC	5.9mm/0.234"	39	PVC - Gray	305m/1000ft Box	26.4kgs/57lbs
16/4-GY-SPL	16	4/26 STR BC	5.9mm/0.234"	39	PVC - Gray	305m/1000ft Spool	26kgs/57lbs
14/2-GY	14	2/19STR BC	5.6mm/0.221"	25	PVC - Gray	305m/1000ft Spool	18.1kgs/40lbs
14/4-GY	14	4/19 STR BC	6.78mm/0.267"	22	PVC - Gray	305m/1000ft Spool	33kgs/73lbs

Non-Plenum - Riser Shielded							
Part Number	AWG	Conductors STR/SOL	Nom. OD mm/inch	CAP pF/FT	Jacket / Color	Packaged Length	Weight
22/2SH-GY	22	2/7 STR BC	3.0mm/0.118"	35	PVC - Gray	305m/1000ft Box	4.7kgs/10.5lbs
22/4SH-GY	22	4/7 STR BC	3.38mm/0.133"	42	PVC - Gray	305m/1000ft Box	7.5kgs/16.5lbs
22/4SH-GY-500	22	4/7 STR BC	3.38mm/0.133"	42	PVC - Gray	152m/500ft Box	3.9kgs/8.5lbs
22/6SH-GY	22	6/7 STR BC	3.81mm/0.15"	55	PVC - Gray	305m/1000ft Box	14kgs/31lbs
22/6SH-500	22	6/7 STR BC	3.81mm/0.15"	55	PVC - Gray	152m/500ft Box	6.8kgs/15lbs
22/6SH-WT	22	6/7 STR BC	3.81mm/0.15"	55	PVC - Gray	305m/1000ft Box	14kgs/31lbs
22/8SH-GY	22	8/7 STR BC	4.19mm/0.165"	39	PVC - Gray	305m/1000ft Box	14.7kgs/32.5lbs
22/8SH-WT	22	8/7 STR BC	4.19mm/0.165"	39	PVC - Gray	305m/1000ft Box	14.7kgs/32.5lbs
18/2SH-GY	18	2/16 STR BC	4.2mm/0.166"	69	PVC - Gray	305m/1000ft Box	11.8kgs/26lbs
18/4SH-GY	18	4/16 STR BC	5.5mm/0.2165"	130	PVC - Gray	305m/1000ft Spool	18.1kgs/40lbs
18/4SH-GY-500	18	4/16 STR BC	5.5mm/0.2165"	130	PVC - Gray	152m/500ft Box	9.5kgs/21lbs
18/6SH-GY	18	6/16 STR BC	5.6mm/0.221"	44	PVC - Gray	305m/1000ft Spool	21.8kgs/48lbs
18/6SH-GY-500	18	6/16 STR BC	5.6mm/0.221"	44	PVC - Gray	152m/500ft Box	10.9kgs/24lbs
18/8SH-GY	18	8/16 STR BC	6.35mm/0.25"	42	PVC - Gray	305m/1000ft Spool	27.6kgs/61lbs
16/2SH-GY	16	2/26 STR BC	5.13mm/0.202"	68	PVC - Gray	305m/1000ft Box	14.5kgs/32lbs
16/4SH-GY	16	4/26 STR BC	5.99mm/0.236"	51	PVC - Gray	305m/1000ft Spool	26.3kgs/58lbs
14/2SH-GY	14	2/19 STR BC	5.76mm/0.227"	65	PVC - Gray	305m/1000ft Spool	19kgs/42lbs
14/4SH-GY	14	4/19 STR BC	6.78mm/0.267"	74	PVC - Gray	305m/1000ft Spool	33.8kgs/70lbs

Multi-Purpose Plenum

Features		Compliance			Applications		
Stranded or Solid Bare Copper Conductors, Insulated Twisted Pair; UL Listed; Descending Feet and Zone/Outlet Jkt Markings; Packaging: Spool or Box		UL CMP CL2P/CL3P c(UL) FT6; UL 444; RoHS; Low Voltage & Power Limited Systems; 300V 75°C; 14-12AWG are not recognized by c(UL).			Low Voltage Security & Control; Intercom Systems; Sound/Audio Systems; 70V Speaker; Power-Limited Controls Class 2 and Class 3		
Plenum - Unshielded							
Part Number	AWG	Conductors STR/SOL	Nom. OD mm/inch	CAP pF/FT	Jacket / Color	Packaged Length	Weight
22/2P	22	2/7 STR BC	3.0mm/0.12"	18	LS-PVC/White	305m/1000ft Box	4.5kgs/10lbs
22/4P	22	4/7 STR BC	3.58mm/0.141"	23	LS-PVC/White	305m/1000ft Box	7.2kgs/16lbs
22/4P-500	22	4/7 STR BC	3.58mm/0.141"	23	LS-PVC/White	152m/500ft Box	3.9kgs/8.5lbs
22/4P-500-SPL	22	4/7 STR BC	3.58mm/0.141"	23	LS-PVC/White	152m/500ft Spool	
22/6P	22	6/7 STR BC	4.06mm/0.16"	21	LS-PVC/White	305m/1000ft Spool	10.2kgs/22.5lbs
22/6P-500	22	6/7 STR BC	4.06mm/0.16"	21	LS-PVC/White	152m/500ft Box	5.4kgs/12lbs
22/12P	22	12/7 STR BC	5.4mm/0.213"	23	LS-PVC/White	305m/1000ft Spool	20.8kgs/46lbs
18/2P	18	2/7 STR BC	4.16mm/0.164"	22	LS-PVC/White	305m/1000ft Spool	8.1kgs/18lbs
18/2P-500	18	2/7 STR BC	4.16mm/0.164"	22	LS-PVC/White	152m/500ft Box	4.3kgs/9.5lbs
18/4P	18	4/7STR BC	4.67mm/0.184"	28	LS-PVC/White	305m/1000ft Spool	18.1kgs/40lbs
18/4P-500	18	4/7 STR BC	4.67mm/0.184"	28	LS-PVC/White	152m/500ft Box	8.6kgs/19lbs
18/4P-500-SPL	18	4/7 STR BC	4.67mm/0.184"	28	LS-PVC/White	152m/500ft Spool	
18/6P	18	6/7 STR BC	5.3mm/0.21"	28	LS-PVC/White	305m/1000ft Spool	25.4kgs/56lbs
18/8P	18	8/7 STR BC	6.0mm/0.238"	45	LS-PVC/White	305m/1000ft Spool	29.9kgs/66lbs
16/2P	16	2/19 STR BC	4.83mm/0.19"	24	LS-PVC/White	305m/1000ft Spool	20.4kgs/45lbs
16/2P-BK	16	2/19 STR BC	4.83mm/0.19"	24	LS-PVC/Black	305m/1000ft Spool	15kgs/33lbs
16/4P	16	4/19 STR BC	5.6mm/0.221"	26	LS-PVC/White	305m/1000ft Spool	26.7kgs/59lbs
16/4P-BK	16	4/19 STR BC	5.6mm/0.221"	26	LS-PVC/Black	305m/1000ft Spool	26.7kgs/59lbs
14/2P	14	2/19 STR BC	5.84mm/0.23"	22	LS-PVC/White	305m/1000ft Spool	18.1kgs/40lbs
14/2P-BK	14	2/19 STR BC	5.84mm/0.23"	22	LS-PVC/Black	305m/1000ft Spool	18.1kgs/40lbs
14/2P-500-BOX	14	2/19 STR BC	5.84mm/0.23"	22	LS-PVC/White	152m/500ft Box	9.3kgs/20.5lbs
14/4P	14	4/19 STR BC	6.98mm/0.275"	25	LS-PVC/White	305m/1000ft Spool	33.6kgs/74lbs
14/4P-BK	14	4/19 STR BC	6.98mm/0.275"	25	LS-PVC/White	305m/1000ft Spool	33.6kgs/74lbs
12/2P	12	2/19 STR BC	6.98mm/0.275"	42	LS-PVC/White	305m/1000ft Spool	25.4kgs/56lbs
12/2P-BK	12	2/19 STR BC	6.98mm/0.275"	42	LS-PVC/Black	305m/1000ft Spool	25.4kgs/56lbs
Plenum - Shielded							
Part Number	AWG	Conductors STR/SOL	Nom. OD mm/inch	CAP pF/FT	Jacket / Color	Packaged Length	Weight
22/2SHP	22	2/7 STR BC	3.15mm/0.124"	49	LS-PVC/White	305m/1000ft Spool	5.2kgs/11.5lbs
22/4SHP	22	4/7 STR BC	3.93mm/0.155"	49	LS-PVC/White	305m/1000ft Spool	7.7kgs/17lbs
22/4SHP-500	22	4/7 STR BC	3.93mm/0.155"	49	LS-PVC/White	152m/500ft Box	5kgs/11lbs
22/6SHP	22	6/7 STR BC	4.11mm/0.162"	42	LS-PVC/White	305m/1000ft Spool	10.9kgs/24lbs
22/6SHP-500	22	6/7 STR BC	4.11mm/0.162"	42	LS-PVC/White	152m/500ft Box	5.4kgs/12lbs
22/8SHP	22	8/7 STR BC			LS-PVC/White	305m/1000ft Spool	
18/2SHP	18	2/7 STR BC	4.06mm/0.16"	77	LS-PVC/White	305m/1000ft Spool	10.4kgs/23lbs
18/4SHP	18	4/7 STR BC	4.82mm/0.19"	53	LS-PVC/White	305m/1000ft Spool	16.8kgs/37lbs
18/4SHP-500	18	4/7 STR BC	4.82mm/0.19"	53	LS-PVC/White	152m/500ft Box	8.1kgs/18lbs
18/4SHP-500-SPL	18	4/7 STR BC	4.82mm/0.19"	53	LS-PVC/White	152m/500ft Spool	
18/6SHP	18	6/7 STR BC	5.48mm/0.216"	42	LS-PVC/White	305m/1000ft Spool	25.4kgs/56lbs
18/8SHP	18	8/7 STR BC	6.09mm/0.24"	42	LS-PVC/White	305m/1000ft Spool	29.9kgs/66lbs
16/2SHP	16	2/19 STR BC	4.7mm/0.186"	59	LS-PVC/White	305m/1000ft Spool	13.1kgs/29lbs
16/4SHP	16	4/19 STR BC	5.5mm/0.218"	62	LS-PVC/White	305m/1000ft Spool	20.4kgs/45lbs
14/2SHP	14	2/19 STR BC	5.8mm/0.229"	75	LS-PVC/White	305m/1000ft Spool	19.2kgs/42.5lbs



Structured/Composite Cables

Factory is a leading manufacturer and global supplier of low voltage cables and connectivity accessories. These cables provide the highest quality, performance and value on the market today. Manufacturer offers a wide variety of cables and accessories to accommodate most commercial/residential installations. This Line Card contains our standard stock items for Structured/Composite cables available at our USA warehouses. We have many other bulk cables that may be available through our USA warehouses including Private Label and OEM.

EasyFiber Structured/Composite Cables

Features			Compliance			
Ultra-Bendable Cables for Multimode and Single Mode. Featuring Corning® ClearCurve® and SMF-28 Ultra® bend insensitive optical glass. Provides substantially less signal loss and superior installation performance. Easier to Install.			10G Multimode OM4 50/125, LSZH, EN50575, IEC 60332-1-2, RoHS. Corning® Clearcurve® and Corning® SMF-28® Ultra. Indoor/Outdoor Rated UV Sun Res			
Part Number	Construction	Nom. OD	Jacket / Color	Inst. Rating	Packaged Length	Weight
HNC-EF-1	(1) Cat6 UTP UL CMR (White) + (1) Simplex OS2 EasyFiber w/Corning SMF-28 Ultra, UL OFNR (Yellow), Black Overall Jacket-1000ft/305m Spool	9.6x7.6mm/ 3.7x3"	PVC - Black	UL CM FT4	305m/1000ft Spool	30kgs/66lbs
HNC-EF-2	(2) Cat6 UTP UL CMR (White/Gray) + (1) Cat6a U/FTP UL CMR (Blue) + (1) RG6/UQ CCS + (1) 2-Strand Tight Buff Dist OM3 EasyFiber w/Corning Clearcurve, UL OFNR (Aqua), Blue Overall Jacket-500ft/152m Spool	21.5mm/ 0.84"	PVC - Blue	UL CM FT4	152m/500ft Spool	47.5kgs/104lbs
HNC-EF-3	(2) Cat6 UTP UL CMR (White/Gray) + (1) Cat6a U/FTP UL CMR (Blue) + (1) 2-Strand Tight Buff Dist OM3 EasyFiber w/Corning Clearcurve, UL OFNR (Aqua), Blue Overall Jacket-500ft/152m Spool	19mm/ 0.74"	PVC - Blue	UL CM FT4	152m/500ft Spool	43.5kgs/95lbs

Structured/Composite Cables

Features		Compliance		Applications		
Smart home wiring composite cables. One Pull/One Drop convenience. Protects component cables from installation damage. UL Rated. Descending FT and Zone/Outlet jacket markings.		UL CM CL2/3, c(UL) FT4 75C; 300V; RoHS; UL 444		Structured Cabling Installations. Horizontal LAN Ethernet. CATV/SATV, Audio/Video/Control. Power Limited Class 2/3.		
Part Number	Construction	Nom. OD	Jacket / Color	Inst. Rating	Packaged Length	Weight
HNC-1-BL	1x Cat5e UTP 24AWG SOL BC + 1x RG6/U BC Quad Shield Coax, Siamese (Side x Side)	7.25mm/0.285"	PVC - Blue	UL CM FT4	152m/500ft Spool	13.5kgs/30lbs
HNC-1-WT	1x Cat5e UTP 24AWG SOL BC + 1x RG6/U BC Quad Shield Coax, Siamese (Side x Side)	7.25mm/0.285"	PVC - White	UL CM FT4	152m/500ft Spool	13.5kgs/30lbs
HNC-1-1000-BL	1x Cat5e UTP 24AWG SOL BC + 1x RG6/U BC Quad Shield Coax, Siamese (Side x Side)	7.25mm/0.285"	PVC - Blue	UL CM FT4	305m/1000ft Spool	26.8kgs/59lbs
HNC-2	2x Cat5e UTP 24AWG SOL BC + 2x RG6/U CCS Quad Shield Coax, Bundled	16.9mm/0.665"	PVC - Blue	UL CM FT4	152m/500ft Spool	35.3kgs/77.8lbs
HNC-2-BC	2x Cat5e UTP 24AWG SOL BC + 2x RG6/U BC Quad Shield Coax, Bundled	16.9mm/0.665"	PVC - Blue	UL CM FT4	152m/500ft Spool	35.5kgs/78.3lbs
HNC-6	2x Cat5e UTP 24AWG SOL BC + 1x RG6/U BC Quad Shield Coax, Triamese (Side x Side)	18.6mm/0.732"	PVC - Blue	UL CM FT4	152m/500ft Spool	18.5kgs/41lbs
HNC-8	2x Cat6 UTP 23AWG SOL BC + 2x RG6/U BC Quad Shield Coax, Bundled	17.5mm/0.689"	PVC - Blue	UL CM FT4	152m/500ft Spool	40.7kgs/90lbs
HNC-9	2x Cat6 UTP 23AWG SOL BC + 1x Cat5e UTP 24AWG SOL BC + 2x RG6/U BC Quad Shield Coax, Bundled	19.5mm/0.768"	PVC - Blue	UL CM FT4	152m/500ft Spool	55.4kgs/122lbs
HNC-10	4x Cat5e UTP 24AWG SOL BC, Bundled	12.6mm/0.496"	PVC - Black	UL CM FT4	152m/500ft Spool	33.5kgs/74lbs
HNC-11	4x Cat6 UTP 23AWG SOL BC, Bundled	16.5mm/0.65"	PVC - Black	UL CM FT4	152m/500ft Spool	45.2kgs/100lbs
HNC-12	2x Cat6 UTP 23AWG SOL BC + 2x RG6/U BC Quad Shield Coax + 2x OM1 MM 62.5/125 Fiber, Bundled	18.8mm/0.74"	PVC - Blue	UL CM FT4	152m/500ft Spool	48.6kgs/107lbs
HNC-15	1x Cat6 UTP 23AWG SOL BC + 1x RG6/U BC Quad Shield Coax, Siamese (Side x Side)	13.7mm/0.539"	PVC - Blue	UL CM FT4	305m/1000ft Spool	29kgs/64lbs
HNC-16	3x Cat5e UTP 24AWG SOL BC + 1x RG6/U Quad Shield Coax, Bundled	16.5mm/0.65"	PVC - Blue	UL CM FT4	152m/500ft Spool	34kgs/75lbs
HNC-18	3x Cat6 UTP 23AWG SOL BC + 1x RG6/U BC Quad Shield Coax, Bundled	17.5mm/0.689"	PVC - Blue	UL CM FT4	152m/500ft Spool	42.8kgs/94lbs



Connectors and Adapters

Connectors and Adapters for your Networking, Audio/Video, and CCTV needs including: 10G Terminations, RJ45 Plugs & Couplers, BNC-Connectors, F-Type-Connectors, RCA-Connectors, Adapters and more.

RJ45 Field Plugs		
Features	Compliance	
RJ45 Field Plug. First 1-Piece Field Plug. Improves Channel Link Performance. Tool-less. Easy to Use. PoE/PoH full support.	10GBase-T, ANSI/TIA 568.2-D, ISO/IEC 11801 Class Ea; TIA 1096A; PoE: IEEE 802.3bt; UL Rated, RoHS	
Part Number	Description	Packaging
10G-FPS	Slim Style Tool-less ProGrade 10GBaseT Shielded RJ45 Field Plug, 1pc Design + Load Bar. For Cat7a/6a/6 22-26 AWG	1ea/Bag/10pc MP
10G-FP	Tool-less ProGrade 10GBaseT Shielded RJ45 Field Plug, 1pc Design + Load Bar. For Cat7a/6a/6 22-26 AWG	1ea/Bag/10pc MP
10G-FP-U	Tool-less Unshielded 10GBaseT Shielded RJ45 Field Plug, 1pc Design + Load Bar. For Cat7a/6a/6 22-26 AWG	1ea/Bag/10pc MP

RJ45 Standard 8P8C Mod Plugs		
Features	Compliance	
Economical 8P8C RJ45.	10GBase-T, ANSI/TIA 568.2-D, ISO/IEC 11801; TIA 1096A; PoE: IEEE 802.3bt; RoHS	
Part Number	Description	Packaging
106A	Economical 10GBaseT Shielded Standard 8P8C RJ45 Modular Plugs - For Cat6a STP & Cat6 STP Cables, 23 AWG Solid 1.2mm w/Load Bar	100ea/Bag
106	Economical Cat6 Unshielded Standard 8P8C RJ45 Modular Plug, 23AWG Solid Cable, w/Load Bar, ANSI/TIA 569.2-D, ISO/IEC 11801 Class E	100ea/Bag
105A	Economical Cat5e Shielded (Internal Ground) Standard 8P8C RJ45 Modular Plug for 24AWG Solid Cable	100ea/Bag
105	Economical Cat5e Unshielded Standard 8P8C RJ45 Modular Plug for Solid Cable	100ea/Bag

Coax Compression Connectors		
Features	Compliance	
RJ45 Field Plug. First 1-Piece Field Plug. Improves Channel Link Performance. Tool-less. Easy to Use. PoE/PoH full support.	10GBase-T, ANSI/TIA 568.2-D, ISO/IEC 11801 Class Ea; TIA 1096A; PoE: IEEE 802.3bt; UL Rated, RoHS	
Part Number	Description	Packaging
908	F-Type Compression Connector for RG6/U Quad Shield	50ea/Bag
909	F-Type Compression Connector for RG6/U	50ea/Bag
920-59	Gold Plated RCA Compression Connector for RG59/U	10ea/Bag
920-59-N	Nickel Plated RCA Compression Connector for RG59/U	10ea/Bag

Private Label - Custom Orders - OEM Manufacturing





Keystone Solutions - Copper and Fiber

Keystone modules and panels are the easiest way to manage and change your network connectivity. Manufacturer has developed a full line of Keystone modules and panels for both copper and fiber networking. All of our Keystone Jacks and Couplers fit into standard and high density keystone ports. Our Keystone Solutions are more cost effective and provide easy integration for all of your copper and fiber networking needs.

Keystone Jacks & Couplers - Copper and Fiber

Features		Compliance
Both Copper and Fiber solutions. Narrow design for easy side by side mounting with no wasted ports. Innovative tool-less jacks are fast, easy to use, and improves performance over IDC type panels. Easily integrate copper and fiber in the same patch panel or wall outlet.		ANSI/TIA 568.2-D, ISO/IEC 11801; TIA 1096A; UL94 V0; PoE IEEE 802.3bt; HDBaseT; RoHS
Part Number	Description	Packaging
6-Color Keystone Jack Snap-on ID Bars:		
KJ-BARS-60	Keystone Snap-On ID Bars - (6) Colors- Blue, Green, Orange, Purple, Red, Yellow - 60 pcs ea Master Pack	10 sets per MP
Shielded Tool-less Panel/Wallplate Mount Keystone Jack for Cat7a/6a/6 - 10GBaseT Rated:		
Shielded Tool-less Panel/Wallplate Mount Keystone Jack for Cat7a/6a/6 - 10GBaseT Rated:		
CAT6A-SH-JACK-WT	10GBaseT RJ45 Shielded Keystone Jack for Cat7a/6a/6 Shielded Cabling, Tool-less, Slim Design, Fully Shielded Zinc Alloy Shell	1ea Bag
Unshielded Tool-less Keystone Jacks Panel/Wallplate Mount:		
Color Code with Snap-on ID Bars		
KJ180U-CAT6/6A-BK, WT	Tool-less Cat6/6A UTP 180° Keystone Jack, Slim Style, Unshielded, w/6 Color ID Bars, 10GBaseT Rated - Black, White	1ea Bag
KJ180U-C5E-BK, WT	Tool-less Cat5e UTP 180° Keystone Jack, Slim Style, Unshielded, w/6 Color ID Bars, 10GBaseT Rated - Black, White	1ea Bag
Shielded Keystone Couplers - Panel/Wallplate Mount - Slim Style:		
Color Code with Snap-on ID Bars		
KCOU-10GSH	10GBaseT Shielded Keystone Coupler - In-line/Slim Style, Cat7a/6a STP - Zinc Housing	1ea/Bag/10pc MP
KCOU-6SH	Cat6 Shielded Keystone Coupler - In-line/Slim Style, Cat6 STP Class E - Zinc Housing	1ea/Bag/10pc MP
UnShielded Keystone Couplers - Panel/Wallplate Mount - Slim Style:		
Color Code with Snap-on ID Bars		
KCOU-10GU-BK, WT	10GBaseT Unshielded Keystone Coupler - Cat6a UTP - Black, White	1ea/Bag/10pc MP
KCOU-6U-BK, WT	Cat6 Unshielded Keystone Coupler - Cat6 UTP - Black, White	1ea/Bag/10pc MP
KCOU-5EU-BK, WT	Cat5e Unshielded Keystone Coupler - Cat5e UTP - Black, White	1ea/Bag/10pc MP

Keystone Couplers - Fiber

Features		
EasyFiber Keystone Couplers. Narrow design ideal for all patch panels and wallplates. No wasted ports. Fits all standard Keystone Ports. Easily customize your panels to include copper and fiber connectivity.		
Part Number	Description	Packaging
EasyFiber Keystone Couplers - Panel/Wallplate Mount:		
F-KJ-MMLCLCD-BK, WT	Duplex LC to LC Multimode OM3/4 EasyFiber Keystone Coupler, High Density Narrow Snap-In Design. Colors: Black, White	1ea/Bag
F-KJ-MMSCSC-BK, WT	Simplex SC to SC Multimode OM3/4 EasyFiber Keystone Coupler, High Density Narrow Snap-In Design. Colors: Black, White	1ea/Bag
F-KJ-SMLCLCD-BK, WT	Duplex LC to LC Single-Mode OS2 EasyFiber Keystone Coupler, High Density Narrow Snap-In Design. Colors: Black, White	1ea/Bag
F-KJ-SMSCSC-BK, WT	Simplex SC/APC to SC/APC Single-Mode OS2 EasyFiber Keystone Coupler, High Density Narrow Snap-In Design. Colors: Black, White	1ea/Bag
F-KJ-SMSCASCA-BK, WT	Simplex SC to SC Single-Mode OS2 EasyFiber Keystone Coupler, High Density Narrow Snap-In Design. Colors: Black, White	1ea/Bag

Keystone Jacks - RJ45 Ethernet 90° Style

Part Number	Description	Packaging
UnShielded Cat6 Keystone - Wallplate Mount:		
CAT6-JACK-XX	Cat6 Unshielded 90° Keystone Jack, UL Listed. EU Stock Colors: Black, Green, Orange, White. Other colors available on request/special order	1ea/Bag
UnShielded Cat5e Keystone - Wallplate Mount:		
101-XX	Cat5e Unshielded 90° Keystone Jack, UL Listed. 10 Colors. Available in EU upon Request	1ea/Bag

Keystone Patch Panels

Features		Compliance
Premium Keystone Patch Panels are universal 1RU or 2RU rack fit and provide lifetime performance with our powder-coat finish over heavy-duty steel construction. Each panel is unloaded allowing you to easily customize your panels for copper and fiber connections with our Keystone jacks and couplers.		ANSI/TIA 568.2-D, ISO/IEC 11801; TIA 1096A; UL94 V0; PoE IEEE 802.3bt; HDBaseT; RoHS
Part Number	Description	Packaging
324U-6ASH	24 Port Shielded Unloaded Keystone Patch Panel, 10G Rated, 1RU, Ground Wire, Premium Rear Cable Mgt Bracket	1ea/Box
324U	24 Port Unshielded Unloaded Keystone Patch Panel, 1RU, Premium Rear Cable Mgt Bracket	1ea/Box
348U	48 Port Unshielded Unloaded Keystone Patch Panel, 2RU, Premium Rear Cable Mgt Bracket	1ea/Box
324UM	Premium Unloaded 24 Port Unshielded Keystone Patch Panel, 1RU, (3) Front Loadable 8-Port Modular Bezels w/Nylon Clip Cable Mgt Bracket	1ea/Box
324UM-SH	Premium Unloaded 24 Port Shielded Keystone Patch Panel, 1RU, (3) Front Loadable 8-Port Modular Bezels w/Nylon Clip Cable Mgt Bracket	1ea/Box



Simply45®

Simply45® is the leading brand for RJ45 modular plug innovation and performance solutions. RJ45 solutions are so innovative that manufacturer has patents filed on many of these product features. Simply45® provides solutions for both Pass-Through RJ45 Modular Plugs and Standard WE/SS (8P8C) RJ45 Modular Plugs. Simply45® understands the importance that both LAN cables and RJ45 modular plugs must work together at the highest levels to support the performance requirements for today's applications.

Simply45® RJ45 Termination System

Features		Compliance
Best RJ45 termination system on the market. Improves termination performance for both Pass-Through and Standard 8P8C RJ45. Patented and leading industry award winner. Commercial Rated for up to B2ca EuroClass. PoE/PoH full support.		ANSI/TIA 568.2-D, ISO/IEC 11801; TIA 1096A; UL94 V0; PoE IEEE 802.3bt; HDBaseT Recommended; RoHS
Simply45 Patented ProSeries Pass-Through RJ45 Connectors		
Patented. Only certifiable Pass-Through solution on the market. Exclusively featuring Cap45® and BarS45™. Recommended for all installations. Commercial/Plenum/B2ca rated.		
Part Number	Description	Packaging
SCP-1755P / S45-1755P	ProSeries Shielded Pass-Through Yellow Tint, Hi/Lo Stagger - Cat7a/7/6a/6 STP, Cap45™ & Bar45™	50pc Plastic Jar
SCP-1750P / S45-1750P	ProSeries Shielded Pass-Through Red Tint, Hi/Lo Stagger - Cat6/6a STP with Cap45® & Bar45®	50pc Plastic Jar
SCP-1700P / S45-1700P	ProSeries Unshielded Pass-Through Red Tint, Hi/Lo Stagger - Cat6/6a UTP with Cap45®	100pc Plastic Jar
SCP-1600P / S45-1600P	ProSeries Unshielded Pass-Through Green Tint, for 23AWG SOL (Cat6 UTP), 26-24awg Stranded (Cat5e/Cat6), Cap45®	100pc Plastic Jar
S45-PSK10G	ProSeries Shielded Pass-Through 10G Starter Kit, 1ea (S45-1755P, S45-C101, S45-801, S45-S01YL & S45-B003)	1kit/Box
S45-PSK6U	ProSeries Unshielded Pass-Through Cat6/6a UTP Starter Kit, 1ea (S45-1700P, S45-C101, S45-801, S45-S01YL & S45-B002)	1kit/Box
Simply45 Patented Pass-Through RJ45 Connectors		
Part Number	Description	Packaging
SCP-1700 / S45-1700	Unshielded Pass-Through Red Tint, Hi/Lo Stagger - Cat6/6a UTP	100pc Plastic Jar
SCP-1600 / S45-1600	Unshielded Pass-Through Green Tint - Cat6 UTP	100pc Plastic Jar
SCP-1601 / S45-1601	Unshielded Pass-Through Green Tint - Cat6 UTP	50pc Clamshell
SCP-1500 / S45-1500	Unshielded Pass-Through Blue Tint - Cat5e UTP	100pc Plastic Jar
SCP-1501 / S45-1501	Unshielded Pass-Through Blue Tint - Cat5e UTP	50pc Clamshell
SCP-1550 / S45-1550	Shielded Pass-Through (Internal Ground) - Cat5e STP	50pc Jar
S45-PTK6U	Unshielded Pass-Through Cat6 UTP Starter Kit, 1ea (S45-1600, S45-C100, S45-801, S45-S01YL, S45-B002)	1kit/Box
Simply45 Standard Non-Pass-Through RJ45 Connectors		
Part Number	Description	Packaging
SCP-1155 / S45-1155	Standard Shielded Cat7a/7/6a RJ45 Modular Plugs (external ground), Orange Tint, Hi/Lo Stagger, Bar45®	50pc Plastic Jar
SCP-1150 / S45-1150	Standard Shielded Cat6 STP RJ45 Modular Plugs (external ground), Green Tint, Hi/Lo Stagger, Bar45®	50pc Plastic Jar
SCP-1100 / S45-1100	Standard Unshielded Cat6/6a UTP RJ45 Modular Plugs, Green Tint, Hi/Lo Stagger, Bar45®	100pc Plastic Jar
SCP-1050 / S45-1050	Standard Shielded Cat5e STP RJ45 Modular Plugs (internal ground), Blue Tint	50pc Plastic Jar
SCP-1100 / S45-1000	Standard Unshielded Cat5e UTP RJ45 Modular Plugs, Blue Tint	100pc Plastic Jar
Simply45 Strain Reliefs/Boots		
Part Number	Description	Packaging
SCP-B001 / S45-B001	Integrated Snag-less Strain Reliefs for all S45 Brand CAT5E UTP & STP - Blue Tint	100pc / Bag
SCP-B002 / S45-B002	Integrated Snag-less Strain Reliefs for all S45 Brand Cat6/6a UTP - Clear	100pc / Bag
SCP-B003 / S45-B003	Strain Reliefs for all S45 Brand STP External Ground - Clear	100pc / Bag
Simply45 RJ45 Crimp Tools		
Part Number	Description	Packaging
SCP-C101 / S45-C101	PRO Series Heavy Duty RJ45 Crimp Tool for all S45 brand UTP & STP RJ45 Modular Plugs	1ea Blister
SCP-C100 / S45-C100	Simply45 Pass-Through RJ45 Crimper for all S45 brand UTP & STP RJ45 Modular Plugs - 1Ea/Blister	1ea Blister
SCP-C200 / S45-C200	Universal (most brands) Standard RJ45 Crimp Tool - UTP RJ45 Mod Plugs	1ea Blister
SCP-C250 / S45-C250	Universal (most brands) Standard RJ45 Crimp Tool- Shielded RJ45 Mod Plugs	1ea Blister
SCP-C190 / S45-C190	Replacement Blades for Simply45 RJ45 Crimp Tools - 1set of 2 blades	1set Clam or Bag
Simply45 Tools - Other		
Part Number	Description	Packaging
SCP-S01BL / S45-S01BL	Adjustable Cat7a/6a/6/5e UTP/STP Cable Stripper - Blue	1ea Blister
SCP-S01YL / S45-S01YL	Adjustable Cat7a/6a/6/5e UTP/STP Cable Stripper - Yellow	1ea Blister
SCP-801 / S45-801	5" Premium Flush Cutter Tool up to 18AWG	1ea Blister
S45-P300	ProSeries Punchdown tool w/ 110 Blade	1ea Blister

Panel Mount Style Couplers - 13mm & 29mm

Part Number	Description	Packaging
13mm Panel Mount Couplers - Multimode OM4 - Polish Type		
F-13PMC-OM4LCLC	Duplex LC/LC Multimode Panel Mount Coupler 13mm Female/Female - Pink	1ea/Bag
F-13PMC-OM4SCSC	Simplex SC/SC Multimode Panel Mount Coupler 13mm Female/Female - Pink	1ea/Bag
13mm Panel Mount Couplers - Single Mode - UPC Polish Type		
F-13PMC-OS2LCLC	Duplex LC/LC Single-Mode Panel Mount Coupler 13mm Female/Female - Blue	1ea/Bag
F-13PMC-OS2LSCSC	Simplex LC/SC Single-Mode Panel Mount Coupler 13mm Female/Female - Blue	1ea/Bag
F-13PMC-OS2SCSC	Simplex SC/SC Single-Mode Panel Mount Coupler 13mm Female/Female - Blue	1ea/Bag
F-13PMC-OS2SCLC-FM	Simplex SC(F)/LC(M) Single-Mode Panel Mount Coupler 13mm Female/Male - Blue	1ea/Bag
F-13PMC-OS2SCASCA	Simplex SC-APC/SC-APC Single-Mode Panel Mount Coupler 13mm Female/Female - Ceramic Sleeve, APC Polish Type - Green	1ea/Bag
29mm Panel Mount Couplers - OM4 Multimode and OS2 Single Mode - UPC Polish Type		
F-29PMC-OM4SCSC	Duplex SC/SC Multimode Panel Mount Coupler 29mm - Pink	1ea/Bag
F-29PMC-OS2SCSC	Duplex SC/SC Single-Mode Panel Mount Coupler 29mm - Blue	1ea/Bag
In-Line Style Fiber Couplers- Single Mode OS2 - UPC Polish Type		
F-ILCD-OS2LSCSC-FM	Duplex LC(F)/SC(M) Single-Mode In-Line Style Coupler -Blue	1ea/Bag



EasyFiber Patch Cables - Fiber

Ultra-Bendable Fiber Patch Cables for both Multimode and Single Mode. Featuring Corning® ClearCurve® and SMF-28 Ultra® bend insensitive optical glass. Provides substantially less signal loss and superior installation performance than traditional fiber patch cables. Easier to Install.

Patch Cables - Optical Fiber - EasyFiber

Features	Compliance			
Ultra-Bendable Fiber Patch Cables for both Multimode and Single Mode. Featuring Corning® ClearCurve® and SMF-28 Ultra® bend insensitive optical glass. Provides substantially less signal loss and superior installation performance than traditional fiber patch cables. Easier to Install.	10G Multimode OM3 50/125, Single Mode OS2 9/125, LSZH, EN50575 EuroClass: Dca-s1,d1,a1. IEC 60332-1-2, RoHS. Corning® Clearcurve® and Corning® SMF-28® Ultra. Indoor/Outdoor Rated UV Sun Res			
Part Number	Length	Connector Ends	Jacket / Color	Packaging
Multimode OM3 - LC/LC - UL OFNR - Indoor/Outdoor				
EFP-OM3R-LCLC-3FT	0.91m/3ft	LC/LC Duplex	Aqua	1ea/Bag
EFP-OM3R-LCLC-6FT	1.8m/6ft	LC/LC Duplex	Aqua	1ea/Bag
EFP-OM3R-LCLC-10FT	3m/10ft	LC/LC Duplex	Aqua	1ea/Bag
EFP-OM3R-LCLC-15FT	4.5m/15ft	LC/LC Duplex	Aqua	1ea/Bag
Single Mode OS2 - LC/LC - UL OFNR - Indoor/Outdoor				
EFP-OS2R-LCLC-3FT	0.91m/3ft	LC/LC Duplex	Yellow	1ea/Bag
EFP-OS2R-LCLC-6FT	1.8m/6ft	LC/LC Duplex	Yellow	1ea/Bag
EFP-OS2R-LCLC-10FT	3m/10ft	LC/LC Duplex	Yellow	1ea/Bag
EFP-OS2R-LCLC-15FT	4.5m/15ft	LC/LC Duplex	Yellow	1ea/Bag
Single Mode OS2 - Simplex - SC-APC - UL OFNR - Indoor/Outdoor				
EFP-OS2R-SIM-SCA-3FT	0.91m/3ft	SC/APC Simplex	Yellow	1ea/Bag
EFP-OS2R-SIM-SCA-6FT	1.8m/6ft	SC/APC Simplex	Yellow	1ea/Bag
EFP-OS2R-SIM-SCA-10FT	3m/10ft	SC/APC Simplex	Yellow	1ea/Bag
EFP-OS2R-SIM-SCA-15FT	4.5m/15ft	SC/APC Simplex	Yellow	1ea/Bag



Patch Cables - Copper

Pro Series High Speed Patch Cables are professionally designed to handle bandwidth intensive applications. Constructed with the highest quality materials, these patch cables provide superior networking performance.

Cat6a Slim Style 10GBaseT Patch Cables

Features	Compliance		
Component Rated Slim Style (3.8mm OD) 10GBaseT Cat6a Patch Cables. Molded/Snagless Boot, UL CM, Indoor/Outdoor UV Sun Res PVC Jkt - 4pr 28AWG Str BC, U/UTP	ANSI/TIA 568.2-D, ISO/IEC 11801 Class Ea, IEC 60332-1-2; UL CM		
Part Number	Length	Jacket / Color	Packaging
C6APC-SL-1-XX	0.3m/1ft	PVC - Black, Blue	1ea/Bag/10pc MP
C6APC-SL-3-XX	1m/3.3ft	PVC - Black, Blue, White	1ea/Bag/10pc MP
C6APC-SL-6-XX	2m/6.5ft	PVC - Black, Blue, White	1ea/Bag/10pc MP
C6APC-SL-10-XX	3m/10ft	PVC - Black, Blue, White	1ea/Bag/10pc MP
C6APC-SL-15-XX	4.6m/15ft	PVC - Black, Blue, White	1ea/Bag/10pc MP

Cat6a Shielded 10GBaseT Patch Cables

Features		Compliance		
Component Rated 10GBaseT Cat6a S/FTP Shielded Patch Cables. Molded/Snag-less Boot, LSZH Jkt. CAT6A 600MHz 10GBaseT Patch Cable - 4pr 26AWG Str BC, S/FTP, LSZH Jkt		Component Rated. ANSI/TIA 568.2-D, ISO/IEC 11801 Class Ea, IEC 60332-1-2		
Part Number	Length	Jacket / Color	Packaging	
C6APC-LSZH-0.3M-BK	0.30m/1ft	LSZH - Black	1ea/Bag/10pc MP	
C6APC-LSZH-0.5M-BK	0.5m/1.6ft	LSZH - Black	1ea/Bag/10pc MP	
C6APC-LSZH-1M-BK	1m/3.3ft	LSZH - Black	1ea/Bag/10pc MP	
C6APC-LSZH-2M-BK	2m/6.5ft	LSZH - Black	1ea/Bag/10pc MP	
C6APC-LSZH-3M-BK	3m/10ft	LSZH - Black	1ea/Bag/10pc MP	
C6APC-LSZH-5M-BK	5m/16.5ft	LSZH - Black	1ea/Bag/10pc MP	
C6APC-LSZH-10M-BK	10m/33ft	LSZH - Black	1ea/Bag/10pc MP	

Cat6 Shielded Patch Cables

Features		Compliance		
Supports shielded Cat6 (Class E) networking applications. CAT6 Shielded 550MHz Patch Cable - 4pr 26AWG Str BC, F/UTP, PVC Jkt		ANSI/TIA 568.2-D, ISO/IEC 11801 Class E, IEC 60332-1-2; UL CM, RoHS		
Part Number	Length	Jacket / Color	Packaging	
C6PCSH-0.3M-BK	0.30m/1ft	PVC - Black	1ea/Bag/10pc MP	
C6PCSH-0.5M-BK	0.5m/1.6ft	PVC - Black	1ea/Bag/10pc MP	
C6PCSH-1M-BK	1m/3.3ft	PVC - Black	1ea/Bag/10pc MP	
C6PCSH-2M-BK	2m/6.5ft	PVC - Black	1ea/Bag/10pc MP	
C6PCSH-3M-BK	3m/10ft	PVC - Black	1ea/Bag/10pc MP	
C6PCSH-5M-BK	5m/16.5ft	PVC - Black	1ea/Bag/10pc MP	
C6PCSH-10M-BK	10m/33ft	PVC - Black	1ea/Bag/10pc MP	
C6PCSH-15M-BK	15m/49ft	PVC - Black	1ea/Bag/10pc MP	
C6PCSH-25M-BK	25m/82ft	PVC - Black	1ea/Bag/10pc MP	

Cat6 Unshielded Patch Cables

Features		Compliance		
Supports Cat6 Class E Unshielded networking applications. Cat6 Unshielded 550MHz Patch Cable - 4PR 24AWG Str BC, PVC Jkt. Colors: Black, Blue, Gray		ANSI/TIA 568.2-D, ISO/IEC 11801 Class E, IEC 60332-1-2; UL CM, RoHS		
Part Number	Length	Jacket / Color	Packaging	
C6PC-0.3M-XX	0.3m/1ft	PVC - Black, Blue, Gray	1ea/Bag/10pc MP	
C6PC-0.5M-XX	0.5m/1.6ft	PVC - Black, Blue, Gray	1ea/Bag/10pc MP	
C6PC-1M-XX	1m/3.3ft	PVC - Black, Blue, Gray	1ea/Bag/10pc MP	
C6PC-2M-XX	2m/6.5ft	PVC - Black, Blue, Gray	1ea/Bag/10pc MP	
C6PC-3M-XX	3m/10ft	PVC - Black, Blue, Gray	1ea/Bag/10pc MP	
C6PC-5M-BK	5m/16.5ft	PVC - Black	1ea/Bag/10pc MP	
C6PC-10M-BK	10m/33ft	PVC - Black	1ea/Bag/10pc MP	

Cat5e Unshielded Patch Cables

Features		Compliance		
Supports Cat5e Class D Unshielded networking applications. Cat5e Unshielded 350MHz Patch Cable - 4PR 24AWG Str BC, PVC Jkt		ANSI/TIA 568.2-D, ISO/IEC 11801 Class D, IEC 60332-1-2; UL CM, RoHS		
Part Number	Length	Jacket / Color	Packaging	
C5PC-0.3M-BK	0.3m/1ft	PVC - Black	1ea/Bag/10pc MP	
C5PC-0.5M-BK	0.5m/1.6ft	PVC - Black	1ea/Bag/10pc MP	
C5PC-1M-BK	1m/3.3ft	PVC - Black	1ea/Bag/10pc MP	
C5PC-2M-BK	2m/6.5ft	PVC - Black	1ea/Bag/10pc MP	
C5PC-5M-BK	5m/16.5ft	PVC - Black	1ea/Bag/10pc MP	

Non-Booted Cat6 and Cat5e Patch Cables

Features		Compliance		
Non-Booted Cat6 UTP and Cat5e UTP stranded patch cables. UL CM and UL CMP Jkt		ANSI/TIA 568.2-D, ISO/IEC 11801 Class E and D; RoHS		
Part Number	Length	Jacket / Color	Packaging	
Non-Booted Cat6 UTP - PVC CM Jkt				
C6PCNB-XX-BL	1ft, 3ft, 7ft, 14ft	PVC - Blue	1ea/Bag/10pc MP	
Non-Booted Cat5e UTP - PVC CM Jkt				
C5PCNB-XX-BL	5ft, 7ft, 10ft, 14ft, 25ft	PVC - Blue	1ea/Bag/10pc MP	
Plenum Non-Booted Cat5e UTP - UL CMP				
C5PCNB-P-XX-WT	10t, 15ft, 25ft, 50ft, 1000ft	Plenum - White	1ea/Bag/10pc MP	



Connectivity - Fiber

It is not just about providing products. We are about providing solutions. Instead of trying to be all things to all people, we have streamlined our fiber solutions to better support the needs of our distribution partners. Our fiber program primarily focuses on infrastructure cables and connectivity solutions that you need for LAN/Networking, AV & Digital Signage, Security, and Multi-Dwelling Units (MDUs). Our fiber solutions start where the Telecom/CATV provider service points end at the building exterior.

EasyFiber Field Installable Mechanical Connectors

Features

EasyFiber Field Installable Connectors are used to terminate optical fiber cable without all the fuss. Field Installable means that the termination can easily be done at the jobsite. For LAN, AV, MDU, FFTH/FFTD and most other applications, high quality mechanical connectors are usually the preferred choice by integrators as they have lower initial investment costs; and are faster/easier to terminate in the field. EasyFiber Premium Connectors outperform most other Field Installable Connectors. These are professional level, premium performance connectors with very low terminated signal loss and reflection; comparable to fusion splice connections. These connectors provide fast terminations comparable to RJ45 termination time.

Part Number	Description	Packaging
EasyFiber Multimode Field Installable Mechanical Connectors - Prepolished		
EF-CON-MM-LC	Premium LC Simplex Multimode 50/125 OM3/OM4 Fast Connector for 250µm/900µm Distribution Cable, Aqua	1ea/Bag/10pc MP
EF-CON-MM-LCZ	Premium LC Simplex Multimode 50/125 OM3/OM4 Fast Connector for 2.0mm Duplex Zip Cable, Aqua	1ea/Bag/10pc MP
EF-CON-MM-SC	Premium SC Simplex Multimode 50/125 OM3/OM4 Fast Connector for 250µm/900µm Distribution & 2.0mm Duplex Zip Cable, Aqua	1ea/Bag/10pc MP
EasyFiber Single Mode OS2 Field Installable Mechanical Connectors - Prepolished		
EF-CON-SM-LC	Premium LC Simplex Single Mode OS2 9/125 Fast Connector for 250µm/900µm Distribution Cable, Blue	1ea/Bag/10pc MP
EF-CON-SM-LCZ	Premium LC Simplex Single Mode OS2 9/125 Fast Connector for 2.0mm Duplex Zip Cable, Blue - 1ea/10 pack	1ea/Bag/10pc MP
EF-CON-SM-SC	Premium SC Simplex Single Mode OS2 9/125 Fast Connector for 250µm/900µm Distribution & 2.0mm Duplex Zip Cable, Blue	1ea/Bag/10pc MP
EF-CON-SM-SCA	Premium SC/APC Simplex Single Mode OS2 9/125 Fast Connector for 250µm/900µm Distribution & 2.0mm Duplex Zip Cable, Green	1ea/Bag/10pc MP

Keystone Couplers - Fiber

Refer to Keystone Solutions Product Line for more details.

Fiber Breakout Kits

Part Number	Description	Packaging
F-BRKG-24	6 Strand - 24" Fiber Breakout Kit - 3mm Color Coded Tubing	1Kit/Bag
F-BRKG-40	6 Strand - 40" Fiber Breakout Kit - 3mm Color Coded Tubing	1Kit/Bag
F-BRK12-24	12 Strand - 24" Fiber Breakout Kit - 3mm Color Coded Tubing	1Kit/Bag
F-BRK12-40	12 Strand - 40" Fiber Breakout Kit - 3mm Color Coded Tubing	1Kit/Bag

SFP Transceiver Modules & Direct Attach Cables

Part Number	Description	Packaging
SFP Gigabit Transceivers - Generic		
F-SFP1G-MM	SFP 1.25G SX 850nm 550m LC DOM Transceiver -- Multimode Fiber	1ea/Bag/10pc MP
F-SFP1G-SM	SFP 1.25G LX 1310nm 20km LC DOM Transceiver -- Single Mode Fiber	1ea/Bag/10pc MP
SFP+ 10G Gigabit Transceivers - Generic		
F-SFP10G-MM	SFP+ 10G SR 850nm 300m LC DOM Transceiver - Multimode Fiber	1ea/Bag/10pc MP
F-SFP10G-SM	SFP+ 10G LR 1310nm 10km LC DOM Transceiver - Single Mode Fiber	1ea/Bag/10pc MP
SFP+ 10G Direct Attach Passive Twinax Cables		
F-SFP10GDAC-1M	1m (3ft) Generic Compatible 10G SFP+ Passive Direct Attach Copper Twinax Cable 30AWG	1ea/Bag
F-SFP10GDAC-3M	3m (10ft) Generic Compatible 10G SFP+ Passive Direct Attach Copper Twinax Cable 30AWG	1ea/Bag
F-SFP10GDAC-7M	7m (23ft) Generic Compatible 10G SFP+ Passive Direct Attach Copper Twinax Cable 24AWG	1ea/Bag

LGX Style Adapter Plates

Part Number	Description	Packaging
Blank - LGX Style Adapter Plates		
F-LGXP-Blank	Blank LGX Adapter Plate - Push Pin style mounting tabs	1ea/Bag
Multimode - LGX Style Adapter Plates - 10G OM3/OM4 Adapters, Zirconia Ceramic Split Sleeve, Push Pin style Mounting Tabs		
F-LGXP-MMLC6	6 LC Duplex Multimode Fiber LGX Adapter Plate - Aqua	1ea/Bag
F-LGXP-MMLC12	12 LC Duplex Multimode Fiber LGX Adapter Plate - Aqua	1ea/Bag
F-LGXP-MMSC6	6 SC Duplex Multimode Fiber LGX Adapter Plate - Aqua	1ea/Bag
F-LGXP-MMSC6SIM	6 SC Simplex Multimode Fiber LGX Adapter Plate - Aqua	1ea/Bag
Single Mode - LGX Style Adapter Plates - OS2 9/125 Adapters, Zirconia Ceramic Split Sleeve, Push Pin style Mounting Tabs		
F-LGXP-SMLC6	6 Duplex LC Single-Mode Fiber LGX Adapter Plate - Blue	1ea/Bag
F-LGXP-SMLC12	12 Duplex LC Single-Mode Fiber LGX Adapter Plate - Blue	1ea/Bag
F-LGXP-SMSC6	6 Duplex SC Single-Mode Fiber LGX Adapter Plate - Blue	1ea/Bag
F-LGXP-SMSC6SIM	6 Simplex SC Single-Mode Fiber LGX Adapter Plate - Blue	1ea/Bag
F-LGXP-SMSCA6	6 Duplex SC/APC Single-Mode Fiber LGX Adapter Plate - Green	1ea/Bag
F-LGXP-SMSCA6SIM	6 Simplex SC/APC Single-Mode Fiber LGX Adapter Plate - Green	1ea/Bag



HDMI® Cables & Adapters

Manufacturer introduces our HDMI® tested and approved PREMIUM CERTIFIED CABLE SERIES. These are fully shielded HDMI cables that have been tested and approved by HDMI to the new Premium High Speed HDMI® Cable with Ethernet performance standard. Each cable bears the HDMI Anti-Counterfeiting Label for Premium Certified Cables. These are the recommended cables for Professional Home Theaters, Commercial Installations, and Consumers wanting the best HDMI cables for 4K Ultra HD displays and content.

8K 48Gbps HDMI over EasyFiber

Features		Compliance	Applications	
48Gbps/8K HDMI Dongle Extender Kit. Extend full HDMI 2.1 feature support up to 300m/1000ft using MPO preterminated EasyFiber.		Supports all of the features for HDMI v2.1. 8K@60 4:4:4 48Gbps, 4K@120Hz; HDCP 2.3, eARC, VRR, Dynamic HDR, QMS, QFT. Audio Formats: DTS:A, Dolby TrueHD, Dolby Atmos	Gaming, Conference Room Solutions, Home Theater, Digital Signage, LED signboards, Medical Imaging Equipment, Schools, Offices, Residential and all 4K/8K display device connectivity.	
Part Number	Description		Packaging	
998-DO-EXT	48Gbps HDMI Dongle Extender Kit - Tx & Rx HDMI Dongles, HDMI Type A (m)/MPO (f), (2) USB Power cables, (1) Pulling Capsule. MPO EasyFiber patch cables sold separately.		1Kit/Box	
EFP-MPO-COU	MPO Coupler (f/f) for EasyFiber Patch Cables - 1ea/Bag. Mstr Pk 10ea		1ea/Bag/10pcs Mstr Pk	
UL Plenum MPO/MPO EasyFiber Patch Cable for 48Gbps HDMI Dongle Extender Kit - 998-DO-EXT				
EFP-998-P-XX	8 Strand OM3 50/125 EasyFiber w/Corning® ClearCurve®, MicroArmored, UL OFNP Plenum, Indoor/Outdoor UV Sun Res Jkt-Aqua		15, 25, 50, 100, 200, 300ft	1 ea/Bag

8K 48Gbps Ultra High Speed HDMI Cables

Features		Compliance	Applications		
48Gbps bandwidth. Passive Bi-Directional. Certified by HDMI ATC. Triple Shielded construction. Molded PVC housings. No Snug-Tite Grip. HDMI Type A.		Certified Ultra High Speed - HDMI v2.1 8K@60 4:4:4 48Gbps, 4K@120Hz; HDCP 2.3, eARC, VRR, Dynamic HDR, QMS, QFT. UL CL3 In-Wall Rated. All v2.1 Audio Formats: DTS:A, Dolby TrueHD, Dolby Atmos	Gaming, Conference Room Solutions, Home Theater, Digital Signage, LED signboards, Medical Imaging Equipment, Schools, Offices, Residential and all 4K/8K display device connectivity. Ideal for mobile connections.		
Part Number	Length	Nom. OD	Jacket / Color	Installation Rating	Packaging
992UHS-XXM	0.5m/1.6ft, 1m/3.3ft, 2m/6.6ft, 3m/10ft, 5m/16.4ft	5.0mm	PVC - Black	UL CL2/3 In-Wall	1 ea/Bag

Active Optical Cables (AOC)

Ultra Black Active Optical HDMI® Cable - 4K 24Gbps

Features		Compliance	Applications		
Hybrid Copper/Fiber Active Optical Cable. 4K@60 4:4:4 up to 24Gbps. No power required. SnugTite Grip (Display End Only), HDR, ARC, CEC, ALLM, VRR, HDCP 2.3, BT.2020, 32 Channel Audio. High ESD Protection. Thinner & More Flexible. Reinforced Connector Protection. LSZH EuroClass: Cca. HDMI Type A.		High Speed w/Ethernet - HDMI v2.0b, 4K@60 4:4:4 24Gbps, HDR, HDR10, ARC, HDCP 2.3, CEC, EDID; RoHS; IEC 60332-1-2, EN50575 Cca	Best for all home theater, commercial, schools, digital signage, & more.		
Part Number	Length	Nom. OD	Jacket / Color	Installation Rating	Packaging
997AOC-P-10M	10m/33ft	3.5mm	Plenum / Black	CMP	1ea/Bag
997AOC-P-15M	15m/49ft	3.5mm	Plenum / Black	CMP	1ea/Bag
997AOC-P-20M	20m/65ft	3.5mm	Plenum / Black	CMP	1ea/Bag

Active Optical w/Detachable Connector

Features		Compliance	Applications		
Hybrid Copper/Fiber AOC w/Detachable Connector (Display End). 4K@60 4:4:4 up to 24Gbps. No power required. SnugTite Grip (Both Ends), HDR, ARC, CEC, ALLM, VRR, HDCP 2.3, BT.2020, 32 Channel Audio. High ESD Protection. LSZH EuroClass: Cca.		High Speed w/Ethernet - HDMI v2.0b, 4K@60 4:4:4 24Gbps, HDR, HDR10, ARC, HDCP 2.3, CEC, EDID; RoHS; IEC 60332-1-2, EN50575 Cca	Recommended for conduit installations. The original Detachable HDMI Connector. Includes pulling capsule to protect during install. Lightweight & thinner diameter cable compared to copper. Home theater, commercial, schools, digital signage, & more.		
Part Number	Length	Nom. OD	Jacket / Color	Installation Rating	Packaging
Plenum Rated CMP CL3P AOC HDMI					
995AOC-10M-P	10m/33ft	4.5mm	Plenum / Black	CMP	1ea/Box
995AOC-15M-P	15m/49ft	4.5mm	Plenum / Black	CMP	1ea/Box
995AOC-20M-P	20m/65ft	4.5mm	Plenum / Black	CMP	1ea/Box
995AOC-30M-P	30m/98ft	4.5mm	Plenum / Black	CMP	1ea/Box
In-Wall Rated CL3 PVC AOC HDMI					
995AOC-10M	10m/33ft	4.5mm	PVC / Black	CL3 In-Wall	1ea/Box
995AOC-15M	15m/49ft	4.5mm	PVC / Black	CL3 In-Wall	1ea/Box
995AOC-20M	20m/65ft	4.5mm	PVC / Black	CL3 In-Wall	1ea/Box
995AOC-30M	30m/98ft	4.5mm	PVC / Black	CL3 In-Wall	1ea/Box
Replacement Connector for 995AOC:					
995CON-D/A	Micro HDMI Type D to HDMI Type A			n/a	1ea/Bag

Outdoor/Armored Active Optical Cable

Features		Compliance	Applications		
4K@60 4:4:4 up to 24Gbps. AOC Hybrid Copper/Fiber. No power required. Armored with TPU Jacket. HDR, ARC, CEC, HDCP 2.3, BT.2020, 32 Channel Audio. High ESD Protection. HDMI Type A with IP68 waterproof connectors on each end.		High Speed w/Ethernet - HDMI v2.0b, 4K@60 4:4:4 24Gbps, HDR, HDR10, ARC, HDCP 2.3, CEC, EDID; RoHS	Outdoor, Broadcast, Rental, and mobile applications. Comes on plastic spool. You can easily put on stage reels. IP68 rated water/weatherproof connectors on each end.		
Part Number	Length	Nom. OD	Jacket / Color	Installation Rating	Packaging
996AOC-50M	50m/164ft	5.8mm	Armored TPU / Black	Outdoor/ Sun Res UV	1ea/Plastic Spool
996AOC-90M	90m/295ft	5.8mm	Armored TPU / Black	Outdoor/ Sun Res UV	1ea/Plastic Spool

Premium Certified 4K Ultra HD HDMI Cables

UltraV Premium Certified HDMI

Features		Compliance		Applications	
Snug-Tite Grip securely holds cable into device socket. Premium Certified by HDMI ATC. Triple-Shielded cable and connector protects against EMI and RF. Passive B-Directional installation. High Gloss Purple Connector Housing for better heat dissipation. HDMI Type A.		Premium Certified Cable with Ethernet - HDMI v2.0b 4K@60 4:4:4 18Gbps; HDR, CEC, HDCP 2.3, eARC, BT.2020; RoHS. CL2/3 In-Wall Rated.		Highest quality Premium Certified Cable. Visually appealing. Ideal for Rack Connections. Best heat dissipation. Gaming, Conference Room Solutions, Home Theater, Digital Signage, LED signboards, Medical Imaging Equipment, Schools, Offices, Residential and all 4K display device connectivity.	
Part Number	Length	Nom. OD	Jacket / Color	Installation Rating	Packaging
990UHDV-3	0.91m/3ft	7.3mm	PVC - Black	UL CL2/3 In-Wall	1ea/Resealable Bag
990UHDV-6	1.8m/6ft	7.3mm	PVC - Black	UL CL2/3 In-Wall	1ea/Resealable Bag
990UHDV-10	3m/10ft	7.3mm	PVC - Black	UL CL2/3 In-Wall	1ea/Resealable Bag
990UHDV-15	4.5m/15ft	7.3mm	PVC - Black	UL CL2/3 In-Wall	1ea/Resealable Bag
990UHDV-20	6m/20ft	7.3mm	PVC - Black	UL CL2/3 In-Wall	1ea/Resealable Bag

Ultra Slim Premium Certified HDMI

Features		Compliance		Applications	
The original Slim Style Premium Certified Cable. Thinner cable, smaller size connector housings. Snug-Tite Grip. Premium Certified by HDMI ATC. Triple-Shielded cable and connector protects against EMI and RF. Passive B-Directional installation. HDMI Type A.		Premium Certified Cable with Ethernet - HDMI v2.0b 4K@60 4:4:4 18Gbps; HDR, CEC, HDCP 2.3, eARC, BT.2020 Colorimetry; RoHS. CL2/3 In-Wall Rated.		30% Smaller Connector and thinner/more flexible cable. Ideal for multi-port devices, rack connections, slim style displays, and more. Triple shielded provides excellent EMI protection.	
Part Number	Length	Nom. OD	Jacket / Color	Installation Rating	Packaging
991UHD-0.5M	0.5m/1.6ft	4.5mm	PVC - Black	UL CL2/3 In-Wall	1ea/Resealable Blister
991UHD-1M	1m/3.3ft	4.5mm	PVC - Black	UL CL2/3 In-Wall	1ea/Resealable Blister
991UHD-2M	2m/6.5ft	4.5mm	PVC - Black	UL CL2/3 In-Wall	1ea/Resealable Blister
991UHD-2.5M	2.5m/8.2ft	4.5mm	PVC - Black	UL CL2/3 In-Wall	1ea/Resealable Blister

Custom Installation Premium Certified HDMI

Features		Compliance		Applications	
Snug-Tite Grip securely holds cable into device socket. Premium Certified by HDMI ATC. Triple-Shielded cable and connector protects against EMI and RF. Passive B-Directional installation. Molded PVC housing. HDMI Type A.		Premium Certified Cable with Ethernet - HDMI v2.0b 4K@60 4:4:4 18Gbps; HDR, CEC, HDCP 2.3, eARC, BT.2020; RoHS. CL2/3 In-Wall Rated.		Gaming, Conference Room Solutions, Home Theater, Digital Signage, LED signboards, Medical Imaging Equipment, Schools, Offices, Residential and all 4K display device connectivity.	
Part Number	Length	Nom. OD	Jacket / Color	Installation Rating	Packaging
990UHD-3	0.91m/3ft	7.3mm	PVC - Black	UL CL2/3 In-Wall	1ea/Bag
990UHD-6	1.8m/6ft	7.3mm	PVC - Black	UL CL2/3 In-Wall	1ea/Bag
990UHD-10	3m/10ft	7.3mm	PVC - Black	UL CL2/3 In-Wall	1ea/Bag
990UHD-15	4.5m/15ft	7.3mm	PVC - Black	UL CL2/3 In-Wall	1ea/Bag
990UHD-20	6m/20ft	7.3mm	PVC - Black	UL CL2/3 In-Wall	1ea/Bag

4K High Speed with Ethernet Cables

Ultra Slim HDMI

Features		Compliance		Applications	
Features: The original Ultra-Slim HDMI cable. 40% smaller connector housing. Thinner and more flexible cable. Unshielded. HDMI Type A. 940-15B is Active, Unidirectional cable.		High Speed with Ethernet. 4K@50/60 up to 18Gbps; ARC, CEC, EDID, HDR, HDCP 2.3; RoHS; CL2/3 In-Wall Rated.		Ideal for multi-port devices and connections to thin displays. High Speed with Ethernet. 4K@50/60 up to 18Gbps; ARC, CEC, EDID, HDR, HDCP 2.3; RoHS; CL2/3 In-Wall Rated. Ideal for standard connections.	
Part Number	Length	Nom. OD	Jacket / Color	Installation Rating	Packaging
940-1.6B	0.5m/1.6ft	4.5mm	PVC - Black	Passive - CL2/3 In-Wall	1ea/Bag/10pc MP
940-3B	0.91m/3ft	4.5mm	PVC - Black	Passive - CL2/3 In-Wall	1ea/Bag/10pc MP
940-6B	1.8m/6ft	4.5mm	PVC - Black	Passive - CL2/3 In-Wall	1ea/Bag/10pc MP
940-8B	2.5m/8.2ft	4.5mm	PVC - Black	Passive - CL2/3 In-Wall	1ea/Bag/10pc MP
940-13B	4m/13ft	4.5mm	PVC - Black	Passive - CL2/3 In-Wall	1ea/Bag/10pc MP
940-15B	4.5m/15ft	4.5mm	PVC - Black	Active - CL2/3 In-Wall	1ea/Bag

Custom Installation Premium Certified HDMI

Features		Compliance		Applications	
Custom Installation Series for standard connections. Reliable performance. Unshielded. Longer Length Active cables feature Snug-Tite Grip for securely holding cable into device sockets. Molded PVC housing. HDMI Type A.		High Speed with Ethernet. 4K@50/60 up to 18Gbps; ARC, CEC, EDID, HDR, HDCP 2.3; RoHS; CL2/3 In-Wall Rated.		Home TV's/Displays, Commercial, Schools, all around HDMI connectivity.	
Part Number	Length	Nom. OD	Jacket / Color	Installation Rating	Packaging
944E-3	0.91m/3ft	6.5mm	PVC - Black	Passive - CL2/3 In-Wall	1ea/Bag/10pc MP
944E-6	1.8m/6ft	6.5mm	PVC - Black	Passive - CL2/3 In-Wall	1ea/Bag/10pc MP
944E-10	3m/10ft	6.5mm	PVC - Black	Passive - CL2/3 In-Wall	1ea/Bag/10pc MP
944E-15	4.6m/15ft	6.5mm	PVC - Black	Passive - CL2/3 In-Wall	1ea/Bag/10pc MP
944E-20	6m/20ft	6.5mm	PVC - Black	Passive - CL2/3 In-Wall	1ea/Bag
Active (Unidirectional) 4K HDMI with Snug-Tite Grip. CL2/3 In-Wall Rated:					
944E-25	7.6m/25ft	6.5mm	PVC - Black	Active - CL2/3 In-Wall	1ea/Bag
944E-30	9m/30ft	7.5mm	PVC - Black	Active - CL2/3 In-Wall	1ea/Bag
944E-35	10.7m/35ft	9.0mm	PVC - Black	Active - CL2/3 In-Wall	1ea/Bag
944E-50	15m/50ft	9.0mm	PVC - Black	Active - CL2/3 In-Wall	1ea/Bag

HDMI Adapters

Part Number	Description	Packaging
9AD-DP1.4	DisplayPort 1.4 to HDMI 2.0b Adapter Dongle - DP (m) to HDMI Type A (f) - 150mm/6in, Supports 4K@60Hz HDR	1ea/Bag
9AD-MDP1.4	DisplayPort 1.4 to HDMI 2.0b Adapter Dongle - DP (m) to HDMI Type A (f) - 150mm/6in, Supports 4K@60Hz HDR	1ea/Bag
9AD-USBTYPPEC	USB Type-C to HDMI 2.0b Adapter Dongle - USB-C (m) to HDMI Type A (f) - 150mm/6in, Supports 4K@60Hz	1ea/Bag
951	HDMI Port Saver Adapter - HDMI Type A (m) to HDMI Type A (f), Passive Adapter	1ea/Bag



Tools - Copper & Fiber

We have all the tools that you need for your custom installation project. Installation tools include: crimp tools, punch down tools, RJ45 termination tools, compression tools, cable strippers, and more.

Tools - Cooper

Part Number	Description	Packaging
RJ45 Crimp Tools - Simply45®		
S45-C101	PROSeries Heavy Duty RJ45 Crimp Tool for all S45 brand UTP & STP RJ45 Modular Plugs	1ea Blister
S45-C100	Simply45 Pass Through RJ45 Crimper for all S45 brand UTP & STP RJ45 Modular Plugs - 1Ea/Blister	1ea Blister
S45-C200	Universal (most brands) Standard RJ45 Crimp Tool - UTP RJ45 Mod Plugs	1ea Blister
S45-C250	Universal (most brands) Standard RJ45 Crimp Tool- Shielded RJ45 Mod Plugs	1ea Blister
S45-C190	Replacement Blades for Simply45 RJ45 Crimp Tools - 1set of 2 blades	1set Clam or Bag
Punchdown Tools		
820	Termination & Cutting Tool for 90 Degree Keystone Jacks	1ea/Blister
Coax Crimp Tools		
817	Universal Compact Coax Compression Crimp Tool for BNC, F-TYPE, RCA	1ea/Box
Strippers & Cutters - Simply45®		
S45-S01BL	Adjustable Cat7a/6a/6/5e UTP/STP Cable Stripper - Blue	1ea Blister
S45-S01YL	Adjustable Cat7a/6a/6/5e UTP/STP Cable Stripper - Yellow	1ea Blister
S45-801	5" Premium Flush Cutter Tool up to 18AWG	1ea Blister

Tools - Fiber

Part Number	Description	Packaging
EFT-TERMKIT	EasyFiber Termination Kit - Mechanical cleaver, Kevlar Sheets, 3-Hole Stripper, Visual Fault Locator & more	1ea/Box
EFT-CLEAVER	EasyFiber Mechanical Cleaver - For multimode and single mode, adjustable wheel	1ea/Box
EFT-3STRIP	EasyFiber Three-hole jacket/coating stripper	1ea/Box
EFT-KSHEER	EasyFiber Kevlar and Aramid Yarn Sheers	1ea/Box
EFT-PENCLEAN-LC	EasyFiber Pen Cleaner -- 800 clean cycles for 1.25mm LC connectors	1ea/Box
EFT-PENCLEAN-SC	EasyFiber Pen Cleaner -- 800 clean cycles for 2.5mm SC connectors	1ea/Box
EFT-VFL-1MW	EasyFiber Visual Fault Locator -- 1mW output for 5km signal distribution	1ea/Box
EFT-VFL-LCADP	EasyFiber Visual Fault Locator Adapter for LC connectors - 2.5mm to 1.25mm	1ea/Box



Installation Products

Low Voltage Mounting Brackets are available for both new construction or retrofit installations. Low Voltage Mounting Brackets are the time and money-saving solution for faster and easier mounting of Class 2 communications, computer and cable TV wiring.

Low Voltage Mounting Brackets

Part Number	Description	Packaging
MBLV-1	Existing Construction, 1-Gang Low Voltage Mounting Bracket - Black	100ea/Box
MBLV-2	Existing Construction, 2-Gang Low Voltage Mounting Bracket - Black	50ea/Box
MBLV-3	Existing Construction, 3-Gang Low Voltage Mounting Bracket - Black	50ea/Box



Patch Panels & Enclosures - Copper & Fiber

Patch Panels are UL and exceed ANSI/TIA 568.2-D standards for Cat5e and Cat6. Patch Panels are 110 Type and available in 12, 24, and 48 port configurations.

Patch Panels - Copper		
Features	Compliance	
Loaded and Unloaded Rack and Wall Mounted Patch Panels, 19", 1RU and 2RU. Unloaded supports Keystone style Snap-In Modules. See Keystone Solutions Product Line for more information.	ANSI/TIA 568.2-D, ISO/IEC 11801; TIA 1096A; UL94 V0; PoE IEEE 802.3bt; HDBaseT; RoHS	
Part Number	Description	Packaging
PreLoaded Patch Panels:		
324-6ASH	24 Port Loaded Shielded 10GBaseT (Cat7a/6a/6 STP) Patch Panel, 1RU w/Rear Cable Mgt - Black	1ea/Box
348-6	48 Port Loaded Unshielded Cat6 Class E Loaded Patch Panel, 2RU w/Rear Cable Mgt- Black	1ea/Box
324-6	24 Port Loaded Unshielded Cat6 Class E Patch Panel, 1RU w/Rear Cable Mgt- Black	1ea/Box
312-6	12 Port Loaded Unshielded Cat6 Class E Patch Panel, Wall/Rack Mt. w/Bracket- Black	1ea/Box
348	48 Port Loaded Unshielded Cat5e Class D Patch Panel, 2RU w/Rear Cable Mgt- Black	1ea/Box
324	24 Port Loaded Unshielded Cat5e Class D Patch Panel, 1RU w/Rear Cable Mgt- Black	1ea/Box
312	12 Port Loaded Unshielded Cat5e Class D Patch Panel, Wall/Rack Mt. w/Bracket- Black	1ea/Box
Keystone Style Unloaded Patch Panels (See Keystone Solutions Product Line for More Detail):		
324U-6ASH	24 Port Shielded Keystone Style Unloaded, 10G Cat7a/6a/6/5e STP, 1RU w/Rear Cable Mgt- Black	1ea/Box
324U	24 Port Unshielded Keystone Style Unloaded Patch Panel, 1RU w/Rear Cable Mgt- Black	1ea/Box
348U	48 Port Unshielded Keystone Style Unloaded Patch Panel, 2RU w/Rear Cable Mgt- Black	1ea/Box
324UM	Premium Unloaded 24 Port Unshielded Keystone Patch Panel, 1RU, (3) Front Loadable 8-Port Modular Bezels w/Nylon Clip Cable Mgt Bracket	1ea/Box
324UM-SH	Premium Unloaded 24 Port Shielded Keystone Patch Panel, 1RU, (3) Front Loadable 8-Port Modular Bezels w/Nylon Clip Cable Mgt Bracket	1ea/Box
19" Hinged Wall Brackets for Patch Panels		
524	19" Hinged Wall Bracket for 24 Port Patch Panels, 1.75"H x 5.5"D, Metal - Black	1ea/Box
548	19" Hinged Wall Bracket for 48 Port Patch Panels, 3.5"H x 5.5"D, Metal - Black	1ea/Box
19" Cable Organizer Panel		
501	19" Cable Organizer Bracket, 5 Rings, 1.75"H - Metal- Black	1ea/Box
502	19" Cable Organizer Bracket, 5 Rings, 3.5"H - Metal- Black	1ea/Box

Patch Cables & Enclosures - Optical Fiber		
Part Number	Description	Packaging
LGX Style Rack and Wall Mount Enclosures		
Rack Mount Enclosures for LGX Style Adapter Plates Slide Out Wiring Tray, LGX-118 Compatible, Push-Pin Mounting Tabs - Black Metal		
F-ENCLGX-1RU3	1 RU - Rack Mount Fiber Enclosure- Unloaded- Holds 3 Fiber Adapter Panels	1ea/Box
F-ENCLGX-2RU6	2 RU - Rack Mount Fiber Enclosure- Unloaded - Holds 6 Fiber Adapter Panels	1ea/Box
Wall Mount (Indoor) Enclosures for LGX Style Adapter Plates LGX-118 Compatible, Push Pin Style Mounting Table, Plastic locking latch, Top Panel Punch Out, Steel- Black		
F-ENCLGX-W1	1 Module - Fiber Wall Mount Enclosure. Supports (1) Fiber Panel Module	1ea/Box
F-ENCLGX-W2	2 Module - Fiber Wall Mount Enclosure. Supports (2) Fiber Panel Modules	1ea/Box
F-ENCLGX-W4	4 Module - Fiber Wall Mount Enclosure. Supports (4) Fiber Panel Modules	1ea/Box
13mm Panel Coupler Style Rack Enclosures & Wall Boxes		
13mm Panel Coupler Style Rack Enclosures & Wall Boxes		
F-ENC13C-1RU	1 RU - Rack Mount Fiber Enclosure for 13mm Couplers- Unloaded- Supports (24) 13mm Duplex Couplers (Not Included)	1ea/Box
Demarc Wall Boxes for Panel Couplers - Built-In Fiber Coiler, Weatherproof Indoor/Outdoor Rated, Wall/Pole Mountable, UV ABS Plastic - White		
F-DWB-OUT6	6 Port FFTH Demarc Fiber Wall Box - Supports (6) 13mm Panel Mount Couplers (Not Included)	1ea/Box
F-DWB-OUT8	8 Port FFTH Demarc Fiber Wall Box - Supports (8) 13mm Panel Mount Couplers (Not Included)	1ea/Box
Demarc Wall Boxes for Panel Couplers - Indoor Only - Built-In Fiber Coiler, Metal - Black		
F-DWB-IN8	8 Port Unloaded Indoor Fiber Wall Box - Supports (8) 13mm Panel Mount Couplers (Not Included)	1ea/Box

Networking Cabinets, Shelves and Cable Management



P/N: WMF-8U

8U Wall Mount Open Frame Cabinet,
18" Depth - Black
1ea/Box



P/N: WMF-15U

15U Wall Mount Open Frame
Cabinet, 18" Depth - Black
1ea/Box



P/N: WMF-30U

30U Wall Mount Open Frame
Cabinet, 18" Depth - Black
1ea/Box



P/N: WMSH-2U

10in Depth Rack Shelf
Solid 2U - Black
1ea/Box



P/N: WMSH-2UV

10in Depth Rack Shelf Vented 2U
- Black
1ea/Box



P/N: 524

19in Hinged Wall Mount Bracket
1U (24Port) - Black
1ea/Box



P/N: 548

19in Hinged Wall Mount Bracket
2U (48Port) - Black
1ea/Box



P/N: 501

19in Horizontal Single Sided 5 Ring
Cable Mgr 1U (24 Port) - Black
1ea/Box



P/N: 501-4RB

19in Horizontal Single Sided 4 Ring
with Brush Cable Mgr 1U - Black
1ea/Box



P/N: 502

19in Horizontal Single Sided 5 Ring
Cable Mgr 2U (48 Port) - Black
1ea/Box



P/N: 501-BR

19in Horizontal
Brush Plate Strip 1U - Black
1ea/Box



P/N: 502-BLANK5

19in Horizontal Blank Panel
2U - Black- 5pk/Box



P/N: 501-BLANK5

19in Horizontal Blank Panel
1U- Black- 5pk/Box



P/N: 501 HDC

19in High Density Slotted
w/Cover Cable Manager 1U - Black
1ea/Box



P/N: 502 HDC

19in High Density Slotted
w/Cover Cable Manager 2U - Black
1ea/Box



The Dongler

HDMI Presentation & Conference Room Solutions

The Dongler		
Features	Compliance	Applications
Award winning universal dongle and adapter ring holder that safely and securely holds all types of pigtail dongles and adapters. Can be securely attached to infrastructure cable, devices, or furniture. The pigtail dongles feature true 4K Ultra HD performance supporting the latest HDMI, DisplayPort, and USB standards.	Supports up to 32Gbps. HDMI® 4K@60 4:4:4, DisplayPort 1.4, USB™ Certified, VESA Certified, HDCP 2.3, HDR, ARC.	Ideal for presenters, trade shows, conference rooms, office, hotels, churches, gaming, the home, and more.
Part Number	Description	Packaging
DO-L001	ProAV 4K Loaded Dongler: DP1.4, MDP1.4, USB Type C, HDMI Port Saver, Source Harness, Dongler Ring, Combination Lock	1ea/Box
DO-U001	Unloaded Dongler Kit: 3-Dongle Harnesses, 3-Adapter Harnesses, Source Harness, Dongler Ring	1ea/Box
DO-H001	The Dongler - Universal Dongle Harness 3 Pack	1ea/Bag
DO-H002	The Dongler - Universal Adapter Harness 3 Pack	1ea/Bag
DO-D001	The Dongler - Display Port1.4 to HDMI 2.0b Pigtail Adapter Dongle	1ea/Bag
DO-D002	The Dongler - Mini Display Port1.4 to HDMI 2.0b Pigtail Adapter Dongler	1ea/Bag
DO-D003	The Dongler - USB TYPE-C to HDMI 2.0b Pigtail Adapter Dongle	1ea/Bag
DO-D004	The Dongler - HDMI Port Saver Adapter Dongle - Type A to Type A	1ea/Bag
DO-D005	APPLE Lightning Digital AV Adapter. MFI Certified	1ea/Bag
DO-D006	APPLE USB-C Digital AV Adapter, MFI Certified	1ea/Bag



USB & DisplayPort Cables

USB & DisplayPort Cables						
Features	Compliance		Applications			
USB 3.2 Gen 2 SuperSpeed+, 20Gbps/10Gbps. Power Support: 5A/20V/100W, 3A/20V/60W. Bus Powered. USB-C to USB-C. Fast Charging. 4K Resolution. Double Shielded. Full EMI protection. TPE Jacket. Passive and Active cables.	USB 3.2 Gen 2 SuperSpeed+, 20Gbps/10Gbps. Power Support: 5A/20V/100W, 3A/20V/60W. Bus Powered. USB-C to USB-C. Fast Charging. 4K Resolution. Double Shielded. Full EMI protection. TPE Jacket. Passive and Active cables.		Data and 4K Video transfer. Fast Charging. Connect cameras, laptops, tablets, computers, mobile phones, monitors and more.			
Part Number	Length	Description	Type	Jacket / Color	Packaging	
USBC32-1M	1m/3.3ft	20Gbps, Passive Copper, Power 5A/20V/100W, Video Alt Mode up to 8K@60Hz	USB-C Male/Male	TPE - Black	1ea/Bag	
USBC32-2M	2m/6.5ft	10Gbps, Active Copper, Power, 3A/20V/60W, Video Alt Mode 8K@60Hz	USB-C Male/Male	TPE - Black	1ea/Bag	
USBC32-3M	3m/10ft	10Gbps, Active Copper, Power 3A/20V/60W, Video Alt Mode 8K@60Hz	USB-C Male/Male	TPE - Black	1ea/Bag	
USBC32-5M	5m/16ft	10Gbps, Active Copper, Power 3A/20V/60W, Video Alt Mode 8K@60Hz	USB-C Male/Male	TPE - Black	1ea/Bag	

DisplayPort Cables						
Features	Compliance		Applications			
DisplayPort 1.4/1.2 standard. Supports up to 32.4Gbps. Supports 8K/4K devices. Easy Plug'n Play. HBR3 (High Bit Rate), DSC 1.2 (Display Stream Compression). Triple Shielded. Latched connectors provide secure connection.	DisplayPort 1.4/1.2, HBR3, 8K@60Hz, 32.4Gbps, Dynamic HDR. RoHS		Connect computer, laptop, graphics card to monitor, HDTV, or projector.			
Part Number	Length	Description	Type	Jacket / Color	Packaging	
DP14-0.5M	0.5m/1.6ft	DP1.4 HBR3 8K@60Hz 32.4Gbps, Dynamic HDR, Passive Cable	DP Male/Male, Latched	PVC- Black	1ea/Bag	
DP14-1M	1m/3.3ft	DP1.4 HBR3 VESA Certified 8K@60Hz 32.4Gbps, Dynamic HDR, Passive Cable	DP Male/Male, Latched	PVC- Black	1ea/Bag	
DP14-1.8M	1.8m/6ft	DP1.4 HBR3 8K@60Hz 32.4Gbps, Dynamic HDR, Passive Cable	DP Male/Male, Latched	PVC- Black	1ea/Bag	
DP14-3M	3m/10ft	DP1.4 HBR3 VESA Certified 8K@60Hz 32.4Gbps, Dynamic HDR, Passive Cable	DP Male/Male, Latched	PVC- Black	1ea/Bag	
DP12-5M	5m/16ft	DP1.2 HBR2, VESA Certified, 4K2K@60Hz, 21.6Gbps, Passive Cable	DP Male/Male, Latched	PVC- Black	1ea/Bag	

The Dongler is not designed to be an invulnerable protection measure. The Dongler is designed to discourage casual theft or inadvertent removal of attached dongles and adapters. The Dongler and GoSimplyConnect are trademarks of SIMPLY45 LLC © All rights reserved. HDMI, the HDMI Logo, and High-Definition Multimedia Interface are trademarks or registered trademarks of HDMI Licensing LLC in the United States and other countries. DisplayPort™ and the DisplayPort™ logo are trademarks owned by the Video Electronics Standards Association (VESA®) in the United States and other countries "USB Type-C™" and "USB-C™" are trademarks of USB Implementers Forum and are only intended for use with products based on and compliant with the USB-Type-C™ cable and connector specification.



AGS-TECH Inc.

Phone: +1-505-550-6501 and +1-505-565-5102

Fax: +1-505-814-5778

Email: sales@agstech.net

Web: <http://www.agstech.net>