

Best solution  
Better integration

# BIPV PLINTH

## PV Plinths

### MATERIALS

- 10 mm tempered glass  
high-transparency
- 0.76 mm PVB layer
- 0.21 mm monocrystalline  
PV cells 156x156 mm
- 0.76 mm PVB layer
- 10 mm tempered glass

### Composition:



### 42 CELLS

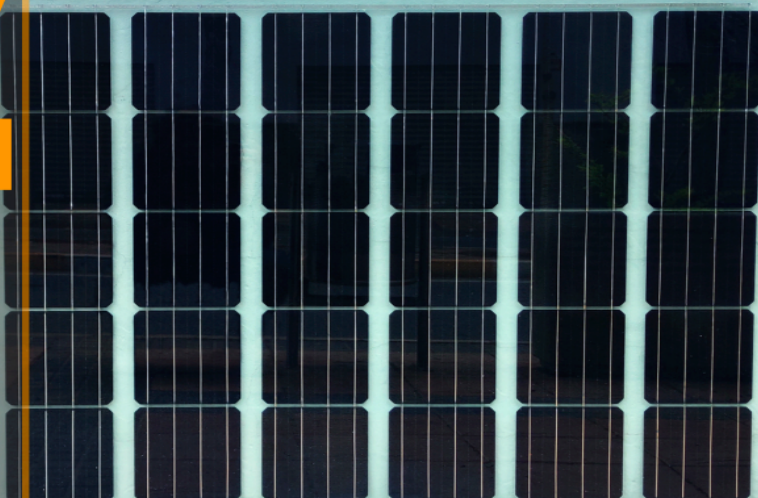
Matrix: 6 x 7  
Size: 1000 x 1260 mm  
Weight: 66.5 kg  
Power:  
M156-42-225W  
P156-42-200W

### 54 CELLS

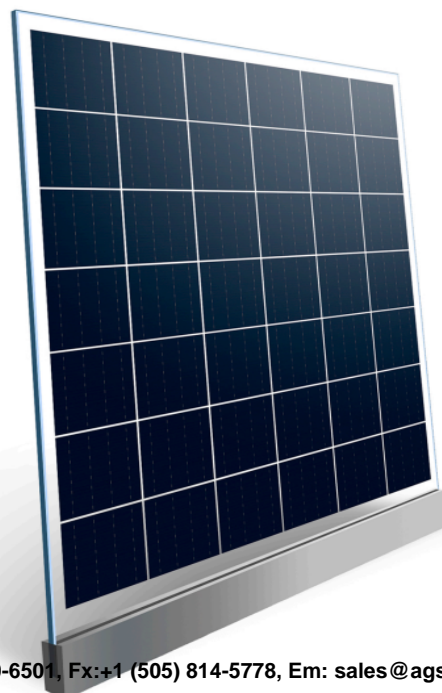
Matrix: 6 x 9  
Size: 1000 x 1600 mm  
Weight: 84.6 kg  
Power:  
M156-54-290W  
P156-54-255W

### 66 CELLS

Matrix: 6 x 11  
Size: 1000 x 1900 mm  
Weight: 100.4 kg  
Power:  
M156-66-355W  
P156-66-310W

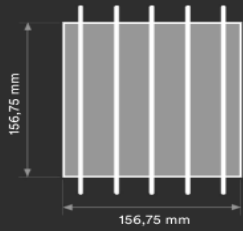


**S**olar plinths are a perfect solution as they constitute a range of active technological glass capable to generate electrical energy, which can be used in **new construction and renovation buildings**, allowing electrical autonomy and energy savings.

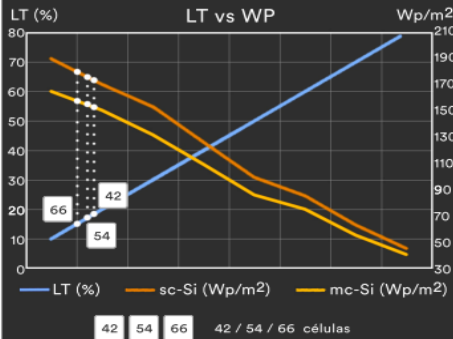
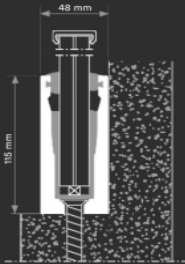


# BIPV

La **integración** arquitectónica de los zócalos fotovoltaicos en la construcción hace posible la creación de superficies acristaladas que, además de ser una novedad **estética y funcional**, generan energía eléctrica.

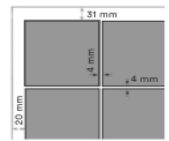
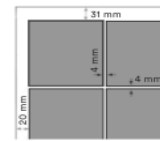
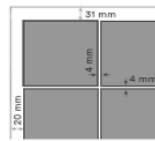


- sc/mc-Si FV
- 5bb de conexión
- alta eficiencia



## 6 modelos

Modelo	BIPV-CT-M156-42	BIPV-CT-P156-42	BIPV-CT-M156-54	BIPV-CT-P156-54	BIPV-CT-M156-66	BIPV-CT-P156-66
Tipo célula	Monocristalina	Policristalina	Monocristalina	Policristalina	Monocristalina	Policristalina
Nº células	42 uds	42 uds	54 uds	54 uds	66 uds	66 uds
Tamaño célula	156,75 x 156,75 mm	156,75 x 156,75 mm	156,75 x 156,75 mm	156,75 x 156,75 mm	156,75 x 156,75 mm	156,75 x 156,75 mm
Dimensión	1000 x 1260 mm	1000 x 1260 mm	1000 x 1600 mm	1000 x 1600 mm	1000 x 1900 mm	1000 x 1900 mm
Espesor	22 mm	22 mm	22 mm	22 mm	22 mm	22 mm
Potencia	225 Wp	200 Wp	290 Wp	285 Wp	355 Wp	310 Wp



**+ Energía + Ahorro - Gasto - CO<sub>2</sub>**

**CE** 2014/35/EU  
EN 50583-1

**ISO** ISO 9001  
ISO 14001  
ISO 45001

**IEC** IEC/EN 61215  
IEC/EN 61730

**EECN** Edificios  
de energía  
casi nula

**ISO 1064**  
Protocolo GHG

**WEEE**  
2002/96/CE

**Material de construcción**  
autoamortizable

**Garantías**  
12/25 años

**Arquitectura**  
fotovoltaica

**Alta**  
satisfacción

**Alta**  
resistencia

**Baja**  
degradación



AGS-TECH, Inc., Ph: +1 (505) 550-6501, Fx: +1 (505) 814-5778, Em: sales@agstech.net,

Web: <http://www.agstech.net>