

Best solution
Better integration

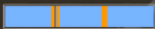
BIPV SKYLIGHT

PV Panel

MATERIALS

- 3 - 12 mm tempered glass high-transparency
- 0.76 mm PVB layer
- 0.21 mm PhotoVoltaic cells
- 0.76 mm PVB layer
- 3 - 12 mm tempered glass
- 0.76 mm PVB layer
- 3 - 12 mm tempered glass

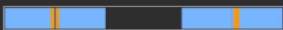
Composition:



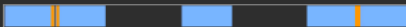
Insulation Chamber/s:

- 6/9/12/15 mm (air/argon)

PV IC Glasses



PV IC Glass IC Glasses



Size:

- Min: 180 x 180 mm
- Max: 4500 x 2500 mm

Junction Box:

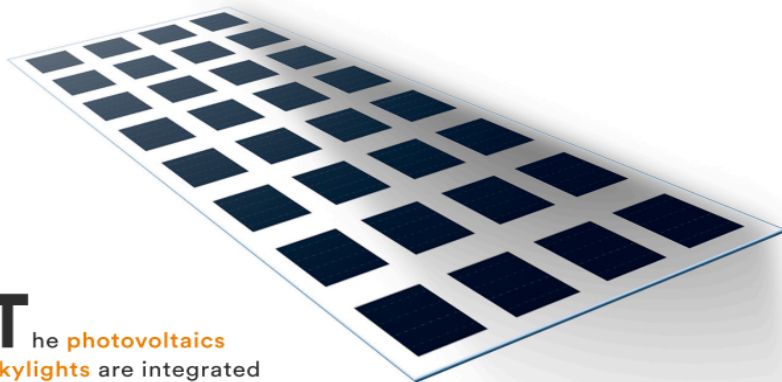
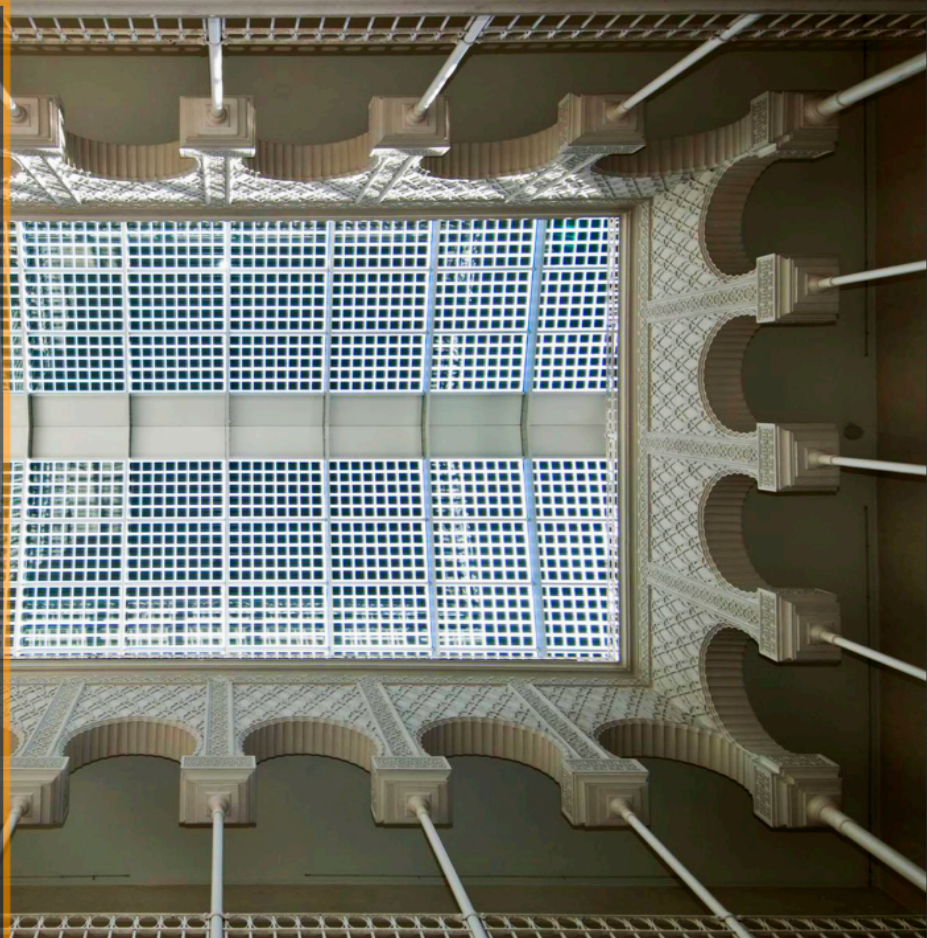
- Border
- Back

Cable:

- 4 mm²

Connectors:

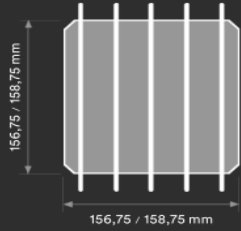
- Type 3
- Type 4



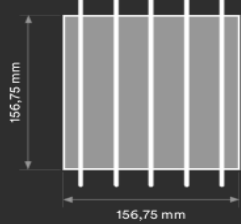
The **photovoltaics** skylights are integrated perfectly in architecture preserving aesthetics thanks to the great variety of possible configurations, fusing ecology with habitability and efficiency. In **existing** buildings, energy saving levels are achieved similar to those of new constructions.

BIPV

The **integrated** photovoltaic skylights are ideal given their location on the roof to generate solar energy by filtering incident radiation and allow natural **lighting** of interior spaces.



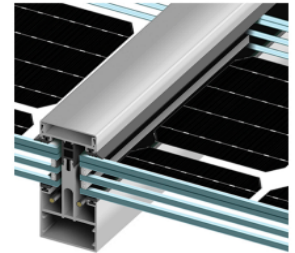
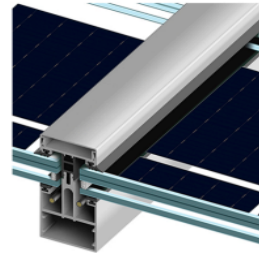
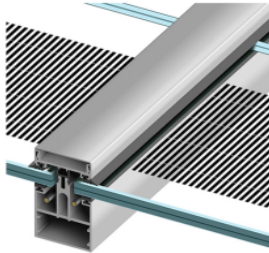
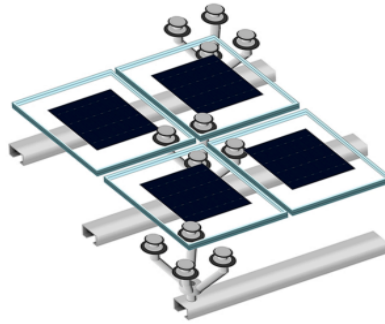
Monocrystalline
 • sc-Si PV
 • 5bb connection
 • high efficiency



Polycrystalline
 • mc-Si PV
 • 5bb connection
 • high efficiency

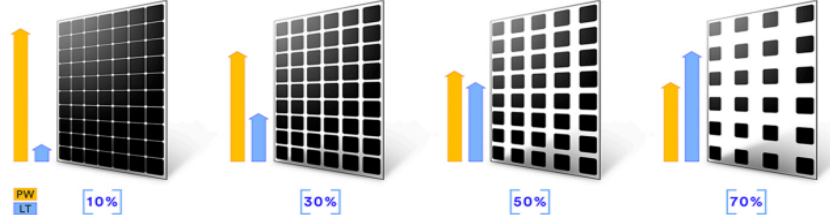


Monocrystalline
 • sc-Si PV
 • 5bb connection
 • high efficiency

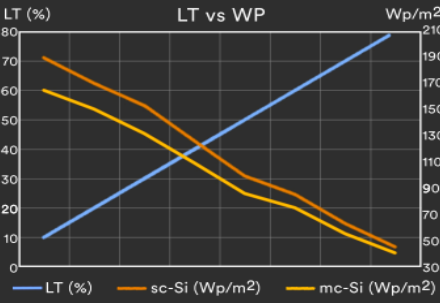


Structure & Insulation

Customized Transparency



+ Energy + Saving - Outlay - CO₂



- CE** 2014/35/EU EN 50583-1
- ISO** ISO 9001 ISO 14001 ISO 45001
- IEC** IEC/EN 61215 IEC/EN 61730 IEC/EN 63092

- nZEB** Nearly Zero Energy Buildings
- Fast Return** of Investment material
- High satisfaction**
- ISO 1064** GHG Protocol
- 12/25 years** guarantee
- High resistance**
- WEEE** 2002/96/CE
- Photovoltaic Architecture**
- Low deterioration**



AGS-TECH, Inc., Ph: +1 (505) 550-6501, Fx: +1 (505) 814-5778, Em: sales@agstech.net,

Web: <http://www.agstech.net>