



Tiny Device Server and Modbus Gateway

2010 Product Catalog

Vol. Tiny1010

- Serial-to-Ethernet Device Server
- Modbus/TCP to RTU/ASCII Gateway
 - Virtual COM port
 - Pair-connection function
 - Easy web configuration
 - Ethernet with PoE
- Ultra-low power consumption
- Cost-effective





tDS-700 Series

Tiny Serial-to-Ethernet Device Server

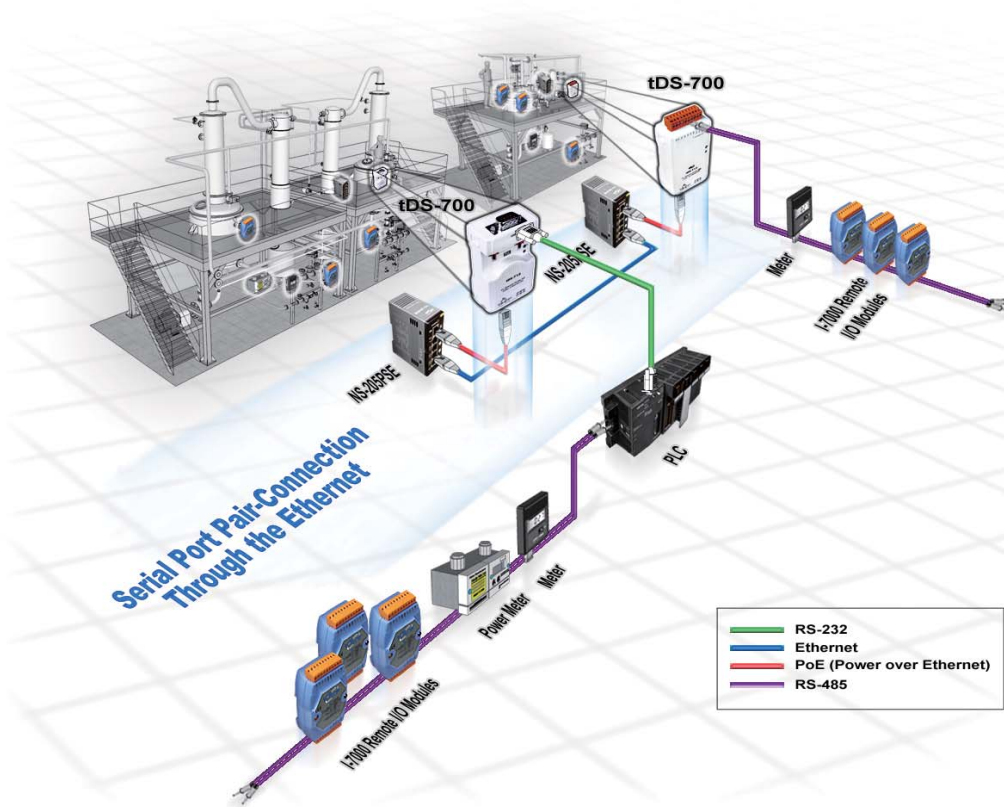
Features

- Incorporates any RS-232/422/485 serial device in Ethernet
- Includes a VxComm Driver for 32/64-bit Windows XP/2003/Vista/7
- Supports pair-connection (serial-bridge, serial-tunnel) applications
- Contains a 32-bit MCU that efficiently handles network traffic
- 10/100 Base-TX Ethernet, RJ-45 x1
(Auto-negotiating, auto MDI/MDIX, LED Indicators)
- Includes redundant power inputs: PoE and DC jack
- Allows automatic RS-485 direction control
- Supports TCP, UDP, HTTP, DHCP, BOOTP and TFTP protocols
- Supports UDP responder for device discovery
- Allows easy firmware updates via the Ethernet
- Contains a tiny Web server for configuration
- Male DB-9 or terminal block connector for easy wiring
- Tiny form-factor and low power consumption
- RoHS compliant with no Halogen
- Made from fire retardant materials (UL94-V0 Level)
- Cost-effective Device Servers

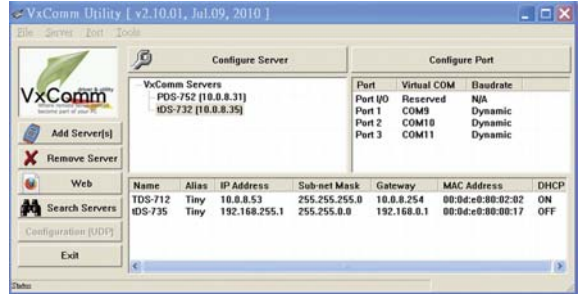


Introduction

The tDS-700 is a series of Serial-to-Ethernet device servers designed to add Ethernet and Internet connectivity to any RS-232 and RS-422/485 device, and to eliminate the cable length limitation of legacy serial communication. By using the VxComm Driver/Utility, the built-in COM port of the tDS-700 series can be virtualized to a standard PC COM port in Windows. Therefore, users can transparently access or monitor serial devices over the Internet/Ethernet without software modification.



The VxComm Driver/Utility supports the most popular operating system in the world, including 32-bit and 64-bit Windows 7/Vista/2008/2003/XP. The virtual COM works transparently and is protocol independent, enabling perfect integration with your current central computer. The utility provides an easy configuration interface that can be used to quickly create and map virtual COM ports to one or several tDS-700 modules. In addition, the utility contains a built-in terminal program, so users can send/receive command/data via the terminal program for easy testing.



The tDS-700 device servers can be used to create a pair-connection application (as well as serial-bridge or serial-tunnel), and can then route data over TCP/IP between two serial devices, which is useful when connecting mainframe computers, servers or other serial devices that do not themselves have Ethernet capability. By virtue of its protocol independence and flexibility, the tDS-700 meets the demands of virtually any network-enabled application.



DHCP minimizes configuration errors caused by manual IP address configuration, such as address conflicts caused by the assignment of an IP address to more than one computer or device at the same time. The tDS-700 supports the DHCP client function, which allows the tDS-700 to easily obtain the necessary TCP/IP configuration information from a DHCP server. The tDS-700 also contains a UDP responder that transmits its IP address information in response to a UDP search from the VxComm Utility, making local management more efficient.

The tDS-700 features a powerful 32-bit MCU to enable efficient handling of network traffic. It also has a built-in web server that provides an intuitive web management interface to allow users to modify the settings of the module, including DHCP/Static IP, gateway/mask and serial ports.

Based on an amazing tiny form-factor, the tDS-700 achieves the maximum space savings that allows it to be easily installed anywhere, even directly attached to a serial device or embedded into a machine.

The tDS-700 series also contains a built-in CPU watchdog, which automatically resets the CPU if the built-in firmware is operating abnormally, or if there is no communication between the tDS-700 and the host for a predefined period of time (system timeout). This is an important feature that ensures the tDS-700 operates continuously, even in harsh environments.

The tDS-700 offers true IEEE 802.3af-compliant (classification, Class 1) Power over Ethernet (PoE) functionality using a standard category 5 Ethernet cable to receive power from a PoE switch such as the NS-205PSE. If there is no PoE switch on site, the tDS-700 will also accept power input from a DC adapter. The tDS-700 is designed for ultra-low power consumption, reducing hidden costs from increasing fuel and electricity prices, especially when you have a huge amount of device servers installed.



Reducing the amount of electricity consumed by choosing energy-efficient equipment can have a positive impact on maintaining a green environment.

The tDS-712 is equipped with a male DB-9 connector, while other models are equipped with a removable terminal block connector to allow easy wiring, and also supports automatic RS-485 direction control when sending and receiving data.

The tDS-700 has the same basic Serial-to-Ethernet gateway and virtual COM functions as the PPDS-700-MTCP series, as shown in the right-hand-side comparison table.

	tDS-700 Series	PPDS-700-MTCP Series
Ethernet	10/100 M, PoE	10/100 M, PoE
Programmable	-	Yes
Virtual COM	Yes	Yes
Virtual I/O	-	Yes
DHCP	Yes	Yes
Web Configuration	Yes	Yes
UDP Search	Yes	Yes
Modbus Gateway	-	Yes
Multi-client	-	Yes
Remarks	Cost-effective	-

Applications

- Factory Automation
- Building Automation
- Home Automation
- Remote Diagnosis and Management





tGW-700 Series

Tiny Modbus/TCP to RTU/ASCII Gateway

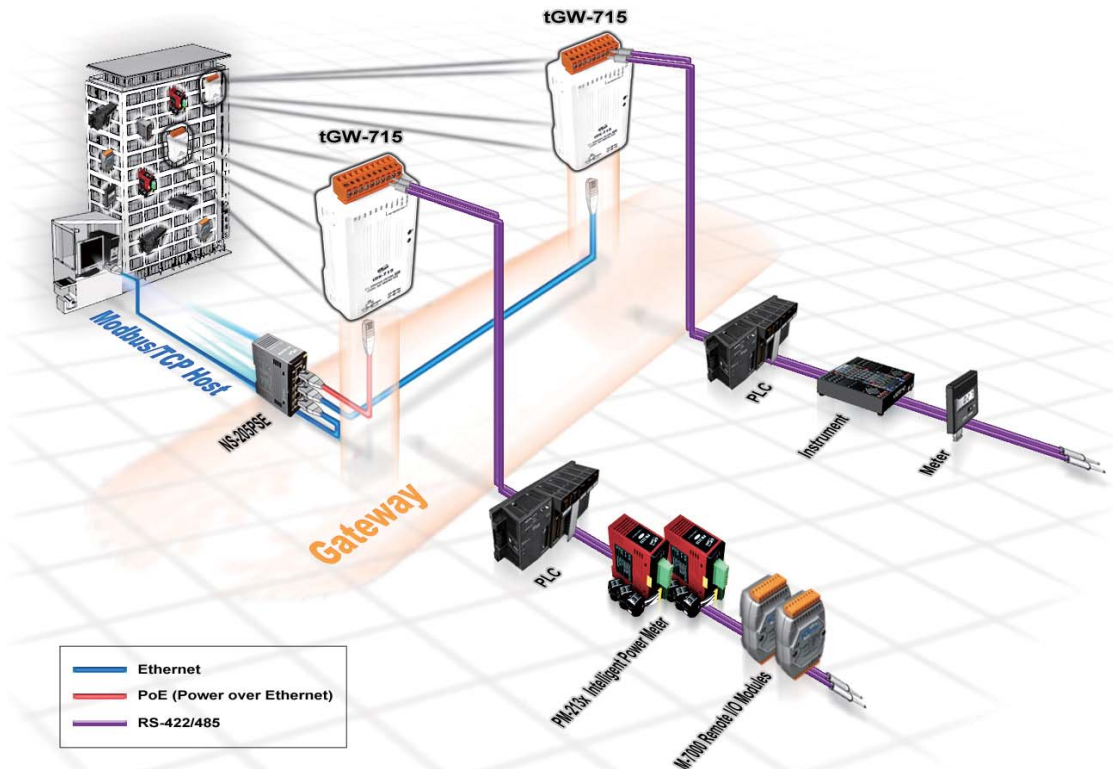
Features

- Cost-effective Modbus/TCP to RTU/ASCII Gateway
- Supports Modbus/TCP master and slave
- Supports Modbus RTU/ASCII master and slave
- Contains a 32-bit MCU that efficiently handles network traffic
- 10/100 Base-TX Ethernet, RJ-45 x1 (Auto-negotiating, auto MDI/MDIX, LED Indicators)
- Includes redundant power inputs: PoE and DC jack
- Allows automatically RS-485 direction control
- Supports TCP, UDP, HTTP, DHCP, BOOTP and TFTP protocols
- Supports UDP responder for device discovery
- Allows easy firmware updates via the Ethernet
- Contains a tiny Web server for configuration
- Male DB-9 or terminal block connector for easy wiring
- Tiny form-factor and low power consumption
- RoHS compliant with no Halogen
- Made from fire retardant materials (UL94-V0 Level)



Introduction

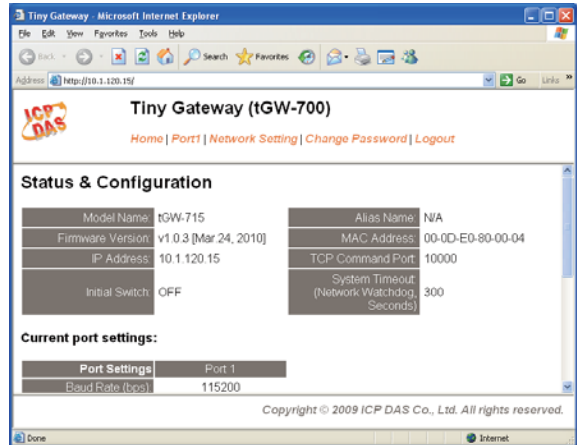
Modbus has become a de facto standard industrial communication protocol, and is now the most commonly available means of connecting industrial electronic devices. Modbus allows for communication between many devices connected to the same RS-485 network, for example, a system that measures temperature and humidity and communicates the results to a computer. Modbus is often used to connect a supervisory computer with a remote terminal unit (RTU) in supervisory control and data acquisition (SCADA) systems.



The tGW-700 module is a Modbus TCP to RTU/ASCII gateway that enables a Modbus/TCP host to communicate with serial Modbus RTU/ASCII devices through an Ethernet network, and eliminates the cable length limitation of legacy serial communication devices. The module can be used to create a pair-connection application (as well as serial-bridge or serial-tunnel application), and can then route data over TCP/IP between two serial Modbus RTU/ASCII devices, which is useful when connecting mainframe computers, servers or other serial devices that use Modbus RTU/ASCII protocols and do not themselves have Ethernet capability.

DHCP minimizes configuration errors caused by manual IP address configuration, such as address conflicts caused by the assignment of an IP address to more than one computer or device at the same time. The tGW-700 module supports the DHCP client function, which allows it to easily obtain the necessary TCP/IP configuration information from a DHCP server. The module also contains a UDP responder that transmits its IP address information in response to a UDP search from the eSearch utility, making local management more efficient.

The tGW-700 module features a powerful 32-bit MCU to enable efficient handling of network traffic, and also has a built-in web server that provides an intuitive web management interface that allows users to modify the configuration of the module, including the DHCP/Static IP, the gateway/mask settings and the serial port settings.



The module contains a dual watchdog, including a CPU watchdog (for hardware functions) and a host watchdog (for software functions). The CPU watchdog automatically resets the CPU if the built-in firmware is operating abnormally, while the host watchdog automatically resets the CPU if there is no communication between the module and the host (PC or PLC) for a predefined period of time (system timeout). The dual watchdog is an important feature that ensures the module operates continuously, even in harsh environments.



The tGW-700 module offers true IEEE 802.3af-compliant (classification, Class 1) Power over Ethernet (PoE) functionality using a standard category 5 Ethernet cable to receive power from a PoE switch such as the NS-205PSE. If there is no PoE switch on site, the module will also accept power input from a DC adapter. The tGW-700 module is designed for ultra-low power consumption, reducing hidden costs from increasing fuel and electricity prices, especially when you have a large number of modules installed. Reducing the amount of electricity consumed by choosing energy-efficient equipment can have a positive impact on maintaining a green environment.

The module is equipped with a male DB-9 or a removable terminal block connector to allow easy wiring. Based on an amazing tiny form-factor, the tGW-700 achieves maximum space savings that allows it to be easily installed anywhere, even directly embedded into a machine. It also supports automatic RS-485 direction control when sending and receiving data, thereby improving the stability of the RS-485 communication.

	tGW-700 Series	PPDS-700-MTCP Series
Ethernet	10/100 M, PoE	10/100 M, PoE
Programmable	-	Yes
Virtual COM	-	Yes
Virtual I/O	-	Yes
DHCP	Yes	Yes
Web Configuration	Yes	Yes
UDP Search	Yes	Yes
Modbus Gateway	Yes	Yes
Multi-client	-	Yes
Remarks	Cost-effective	-

Applications

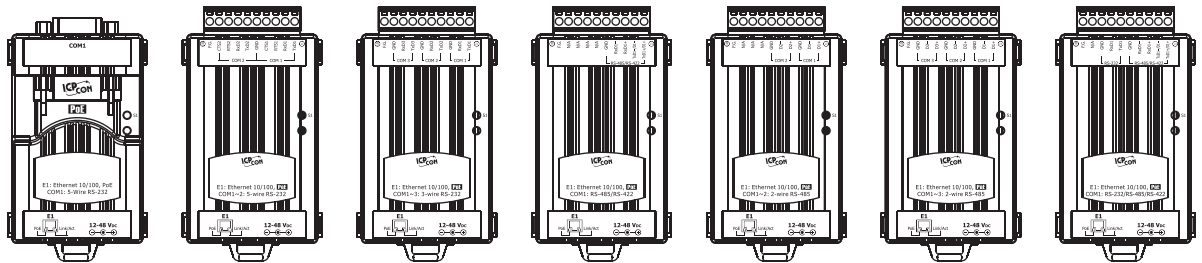
- Factory Automation
- Building Automation
- Home Automation
- Remote Diagnosis and Management



Specifications

Models	tDS-712 tGW-712	tDS-722 tGW-722	tDS-732 tGW-732	tDS-715 tGW-715	tDS-725 tGW-725	tDS-735 tGW-735	tDS-718 tGW-718
System							
CPU	32-bit MCU						
Communication Interface							
Ethernet	10/100 Base-TX, 8-pin RJ-45 x 1, (Auto-negotiating, Auto-MDI/MDIX, LED indicator) PoE (IEEE 802.3af, Class 1)						
COM1	5-wire RS-232	5-wire RS-232	3-wire RS-232	2-wire RS-485 4-wire RS-422	2-wire RS-485	2-wire RS-485	3-wire RS-232 2-wire RS-485 4-wire RS-422
COM2	-	5-wire RS-232	3-wire RS-232	-	2-wire RS-485	2-wire RS-485	-
COM3	-	-	3-wire RS-232	-	-	2-wire RS-485	-
Self-Tuner	-			Yes, automatic RS-485 direction control			
UART	16c550 or compatible						
COM Port Format							
Baud Rate	115200 bps Max.						
Data Bit	5, 6, 7, 8						
Parity	None, Odd, Even, Mark, Space						
Stop Bit	1, 2						
Power							
Power Input	PoE	IEEE 802.3af, Class 1					
	DC jack	+12 ~ 48 V _{DC}					
Power Consumption	0.05 A @ 24 V _{DC}						
Connector	Male DB-9 x 1	10-Pin Removable Terminal Block x 1					
Mechanical							
Flammability	Fire Retardant Materials (UL94-V0 Level)						
Dimensions (W x H x D) (mm)	52 x 90 x 27	52 x 95 x 27					
Installation	DIN-Rail mounting						
Environment							
Operating Temperature	-25 °C ~ +75 °C						
Storage Temperature	-30 °C ~ +80 °C						
Humidity	10 ~ 90% RH, non-condensing						
3-wire RS-232: RxD, TxD, GND (Non-isolated) 5-wire RS-232: RxD, TxD, CTS, RTS, GND (Non-isolated) 2-wire RS-485: DATA+, DATA-, GND (Non-isolated) 4-wire RS-422: TxD+, TxD-, RxD+, RxD-, GND (Non-isolated)							

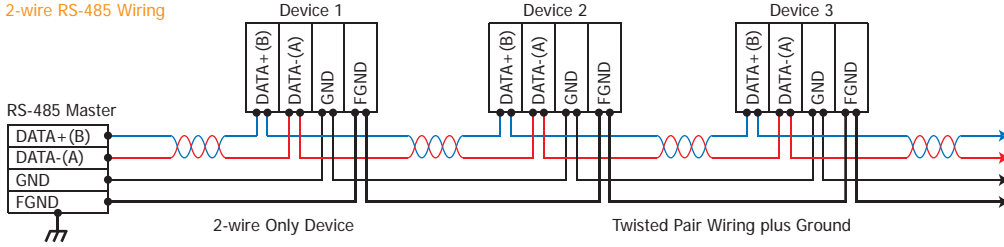
Pin Assignments



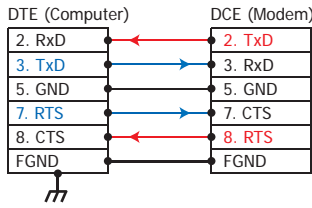
	tDS-712/tGW-712	tDS-722/tGW-722	tDS-732/tGW-732	tDS-715/tGW-715	tDS-725/tGW-725	tDS-735/tGW-735	tDS-718/tGW-718	
COM1 (Male DB-9)	09	N/A	10	F.G.	10	F.G.	10	F.G.
	08	CTS1	09	CTS2	09	N/A	09	N/A
	07	RTS1	08	RTS2	08	N/A	08	N/A
	06	N/A	07	RxD2	07	N/A	07	N/A
	05	GND	06	TxD2	06	N/A	06	N/A
	04	N/A	05	GND	05	GND	05	GND
	03	TxD1	04	CTS1	04	RxD1-	04	RxD1-
	02	RxD1	03	RTS1	03	RxD1+	03	RxD1+
	01	N/A	02	RxD1	02	TxD1-/D1-	02	TxD1-/D1-
		01	TxD1	01	TxD1+/D1+	01	TxD1+/D1+	

Wiring

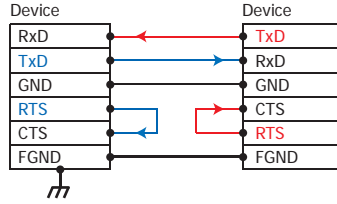
2-wire RS-485 Wiring



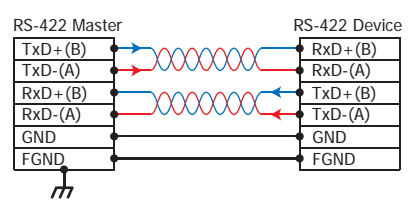
5-wire RS-232 Connection (DB-9)



3-wire RS-232 Connection (Shorts unused signals RTS/CTS)



4-wire RS-422 Wiring



Note:

- For 3-wire RS-232 connections, it is recommended to short unused signals such as RTS/CTS, since some system may still check the CTS status.
- FGND is the frame ground that soldered to DB-9 metal shield.

Ordering Information

tDS-700 Series	
tDS-712 CR	Tiny Device Server with PoE and 1 RS-232 Port (RoHS)
tDS-722 CR	Tiny Device Server with PoE and 2 RS-232 Ports (RoHS)
tDS-732 CR	Tiny Device Server with PoE and 3 RS-232 Ports (RoHS)
tDS-715 CR	Tiny Device Server with PoE and 1 RS-422/485 Port (RoHS)
tDS-725 CR	Tiny Device Server with PoE and 2 RS-485 Ports (RoHS)
tDS-735 CR	Tiny Device Server with PoE and 3 RS-485 Ports (RoHS)
tDS-718 CR	Tiny Device Server with PoE and 1 RS-232/422/485 Port (RoHS)
tGW-700 Series	
tGW-712 CR	Tiny Modbus/TCP to RTU/ASCII Gateway with PoE and 1 RS-232 Port (RoHS)
tGW-722 CR	Tiny Modbus/TCP to RTU/ASCII Gateway with PoE and 2 RS-232 Ports (RoHS)
tGW-732 CR	Tiny Modbus/TCP to RTU/ASCII Gateway with PoE and 3 RS-232 Ports (RoHS)
tGW-715 CR	Tiny Modbus/TCP to RTU/ASCII Gateway with PoE and 1 RS-422/485 (RoHS)
tGW-725 CR	Tiny Modbus/TCP to RTU/ASCII Gateway with PoE and 2 RS-485 Ports (RoHS)
tGW-735 CR	Tiny Modbus/TCP to RTU/ASCII Gateway with PoE and 3 RS-485 Ports (RoHS)
tGW-718 CR	Tiny Modbus/TCP to RTU/ASCII Gateway with PoE and 1 RS-232/422/485 Port (RoHS)

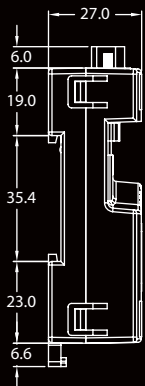
Accessories

CA-0915	Male DB-9 to Female DB-9 Cable, 1.5 m
CA-0910F	Female DB-9 to Female DB-9 Cable, 1.0 m
CA-0910N	DB-9 Female-Female 3-wire Null Modem Cable, 1M
CA-PC09F	DB-9 Female Connector with Plastic Cover
FRA05-S12-SU CR	12V/0.58A (max.) Power Supply (RoHS, for tDS/tGW-700)
DIN-KA52F CR	24V/1.04A, 25 W Power Supply with Din-Rail Mounting (RoHS, for NS-205 and NS-205PSE-24V)
DIN-KA52F-48 CR	48V/0.52A, 25 W Power Supply with Din-Rail Mounting (RoHS, for NS-205PSE)
NS-205 CR	Unmanaged 5-Port Industrial Ethernet Switch (RoHS)
NS-205PSE CR	Unmanaged Ethernet Switch with 4 PoE Ports and 1 RJ-45 Uplink (RoHS)
NS-205PSE-24V CR	Unmanaged 5-Port 10/100 Mbps PoE (PSE) Ethernet Switch; 24 VDC Input (RoHS)

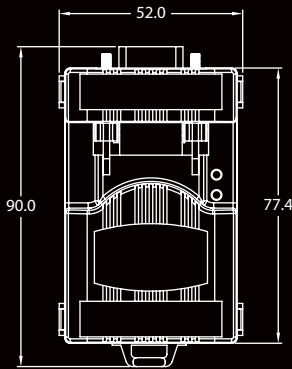


☑ Dimensions (Unit: mm)

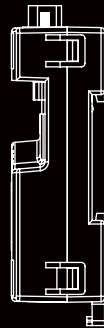
tDS-712/tGW-712



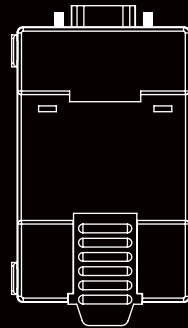
Left Side View



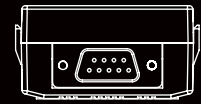
Front View



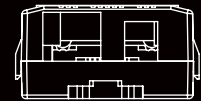
Right Side View



Rear View

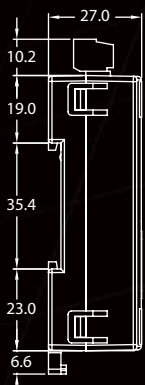


Top View

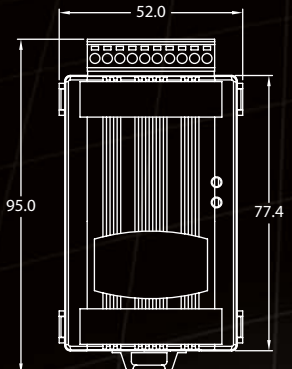


Bottom View

tDS-715/718/722/725/732/735 & tGW-715/718/722/725/732/735



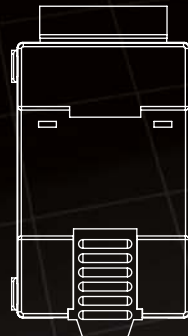
Left Side View



Front View



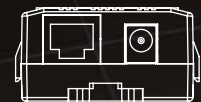
Right Side View



Rear View



Top View



Bottom View



Local Distributor

AGS-TECH Inc

Phone: +1-505-550-6501

Fax: +1-505-814-5778

Email: sales@agstech.net

Web: <http://www.agstech.net>