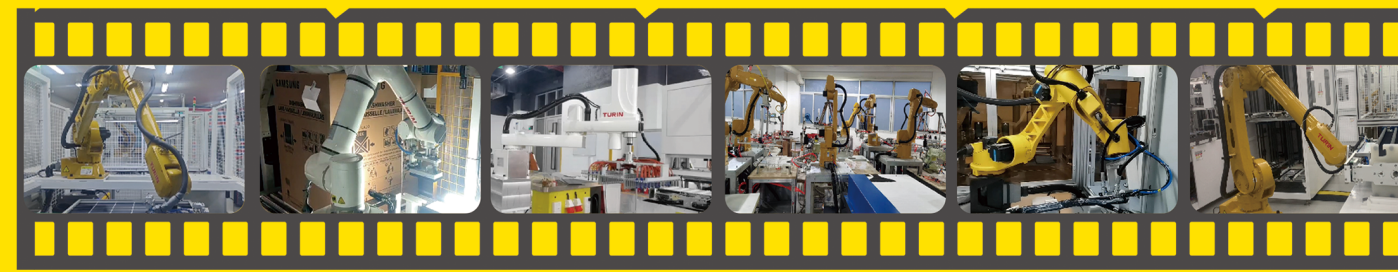
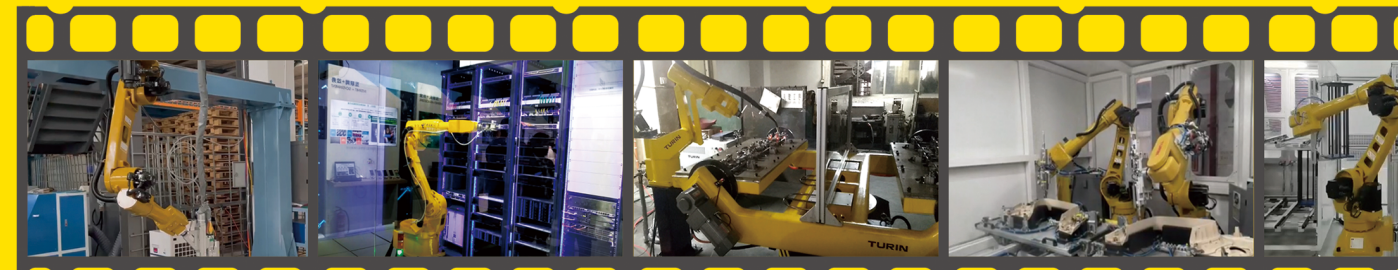
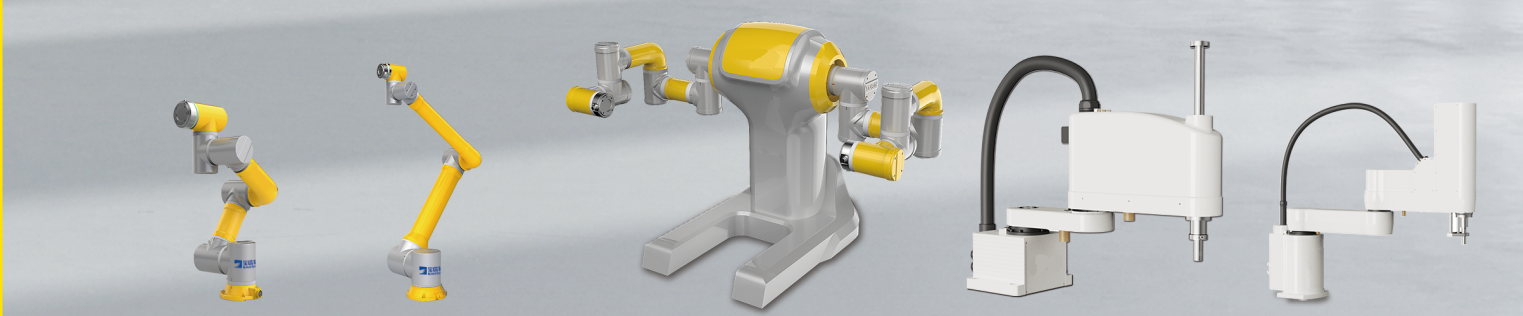


## Application Scenarios of Robots



Versatile Industrial Robot Platform with Deep Integration for Diverse Applications

## 45 Years Of Experience In Industrial Robot Development



Model	TRC4-A03	TRC5-B06	TRC5-G06	TRC3-C06	TRC3-D06
Installation Method	Vertical Installation				
Standard IO	IN:18 Ways (NPN) / OUT:10 Ways (Relay)	Carry: IN:18 Ways (NPN) / OUT:10 Ways (Relay) Welding: IN:6 Ways (NPN) / OUT:10 Ways (Relay); 2 AO (Analogue Output 0-10V)	IN:10 Ways (NPN) / OUT:14 Ways (NPN)	IN:10 Ways (NPN) / OUT:14 Ways (Relay)	IN:10 Ways (NPN) / OUT:14 Ways (Relay)
Communication Interface	Ethernet Net Gate; For TCP/IP, Modbus TCP, Ethernet/IP, MC communication protocols				
	EtherCAT Net Gate; For Expansion of External Axes				
	Expandable Modbus-TCP to RS232 and RS485 serial port server				
	USB2.0 Interface: Program backup and loading, Export robot status information				
Control Mode	PC programming platform control, teach pendant control, remote IO control, remote Modbus control and API control				
Protection Rating	IP54	IP65	IP54	IP54	IP54
Applicable Environment	Temperature: 0°C ~40°C Humidity: 20%-95%RH(30°C) (No Condensation)				
Size	438mmx398mmx185mm	850mmx550mmx566mm	420mmx235mmx405mm	1000mmx550mmx606mm	1000mmx750mmx607mm

Model	Touchscreen	Touchscreen resolution	Protection Rating	Length of Cable	Working Temperature	Size
TRP04-DS	Resistive	8 inches TFT resolution 1024*768	IP54	5m	-30°C ~80°C	290mmx240mmx53mm
TRP04-QT				10/15/20/30m		



Model	TR03-580C	TR05-900C	TR10-1310C	TR20-1650C	TR30-1800C
*Original Model	TCR030	TCR050	TCR100	TCR200	TCR300
Payload	3kg	5kg	10kg	20kg	30kg
Arm Reach	585mm	900mm	1310mm	1650mm	1800mm
DOF	6	6	6	6	6
Power Supply	690~264VAC, 47-63Hz/48VDC				
Programming	Drag teaching, graphic pages				
Security Module	More than 20 adjustable safety features including collision detection, virtual wall and collaboration mode				
Certification	EN ISO13849-1, Cat.3, EN ISO10218-1, European Union CE certification				
Position Repeatability	±0.03mm	±0.03mm	±0.05mm	±0.1mm	±0.1mm
Protection Rating	IP54/IP67	IP54/IP67	IP54/IP67	IP54	IP54
Max Speed	J1	180°/s	180°/s	120°/s	100°/s
	J2	180°/s	180°/s	120°/s	100°/s
	J3	180°/s	180°/s	120°/s	150°/s
	J4	180°/s	180°/s	180°/s	180°/s
	J5	180°/s	180°/s	180°/s	180°/s
	J6	180°/s	180°/s	180°/s	180°/s
Max Operation Area	J1	±175°	±175°	±175°	±175°
	J2	±175°	±175°	±175°	±175°
	J3	-240° ~+60°	-245° ~+65°	-245° ~+65°	-245° ~+65°
	J4	±175°	±175°	±175°	±175°
	J5	±175°	±175°	±175°	±175°
	J6	±360°	±360°	±360°	±360°
Noise Level	Laeq≤85dB(A)				
Rated Power	0.9kw	2.55kw	3.5kw	3.9kw	5.95kw
Applicable Environment	Temperature	0~45° C			
	Humidity	20%~80%RH(No Condensation)			
Body Weight	16kg	26kg	43kg	68kg	154kg
Control Cabinet	TRC5-G06			TRC5-B06	
Installation Method	Installation at Any Angle				



AGS-TECH Inc.  
 Phone: +1-505-550-6501 and +1-505-565-5102  
 Fax: +1-505-814-5778  
 Email: sales@agstech.net  
 Web: http://www.agstech.net





Model	TR03-500S/U	TR10-700S/U	TR03-臂长S/TH	TR10-臂长S/TH	TR20-1200S/TH	TR50-1200S/TH	TR03-臂长S/TW	TR06-臂长S/TW
*Original Model	STG030	STG100	STH030	STH100	STH200	STH500	STW030	STW060
Payload	Rated	3kg	10kg	3kg	10kg	20kg	50kg	3kg
	Max	5kg	-	5kg	-	50kg	-	5kg
Arm Reach	1st + 2nd Robotic Arm	500mm	700mm	400/500/600mm	800/900/1000mm	1200mm	1200mm	500/600mm
	1st Robotic Arm	250mm	300mm	150/250/350mm	400/500/600mm	600mm	550mm	200/300/400mm
	2nd Robotic Arm	250mm	400mm	250mm	400mm	600mm	650mm	300mm
Position Repeatability	J1/J2	±0.01mm	±0.02mm	±0.01mm	±0.02mm	±0.05mm	±0.05mm	±0.01mm
	J3	±0.01mm		±0.01mm		±0.02mm		±0.01mm
	J4	±0.01°		±0.01°		±0.005°		±0.01°
Protection Level	IP40	IP40	IP40	IP40	IP40	IP40	IP40	IP40
Max Speed	J1/J2	9420mm/s	13816mm/s	6280/7065/7850mm/s	11304/12089/12874mm/s	12417mm/s	10162mm/s	7693/8478/9263mm/s
	J3	1000mm/s						
	J4	3500°/s	720°/s	720°/s				3500°/s
Max Operation Area	J1	±225°	±225°	±130°	±136°	±135°	±130°	±139°
	J2	±225°	±138°	±138°	±145°	±150°	±150°	±145°
	J3	150mm	200mm	150mm	200mm	400mm	400mm	200mm
	J4	±360°	±360°	±360°	±360°	±360°	±360°	±360°
Allowable Moment of Inertia of R Axis	Rated	0.01kg·m <sup>2</sup>	0.02kg·m <sup>2</sup>	0.005kg·m <sup>2</sup>	0.02kg·m <sup>2</sup>	-	-	0.01kg·m <sup>2</sup>
	Max	0.05kg·m <sup>2</sup>	0.3kg·m <sup>2</sup>	0.05kg·m <sup>2</sup>	0.3kg·m <sup>2</sup>	2.45kg·m <sup>2</sup>	4.35kg·m <sup>2</sup>	0.12kg·m <sup>2</sup>
Pressing Force of J3	150N	200N	100N	200N	250N	300N	150N	150N
Noise Level	Laeq±85dB(A)							
Takt Time	0.32s	0.6s	0.4s	0.6s	0.91s	0.98s	0.4s	0.4s
Rated Power	1.15kw	1.35kw	0.7kw	1.35kw	3.1kw	3.8kw	0.8kw	1.15kw
User Wiring	RVV10*0.2	RVV20*0.2	RVV10*0.2				RVV10*0.2	
User Piping	3*Φ6mm	3*Φ6mm	3*Φ4mm	3*Φ6mm	3*Φ6mm	3*Φ6mm	3*Φ6mm	3*Φ6mm
User Distribution	single-phase AC220V -10%~+10%						three phase AC380V -10%~+10%	
Applicable Environment	Temperature	0-45 °C						
	Humidity	10%-80%RH						
Body Weight	27kg	43kg	16.8/17.9/19kg	46/48/50kg	155kg	170kg	20/25kg	37.5/40/42kg
Control Cabinet	TRC4-A03		TRC4-A03		TRC3-A06		TRC4-A03	
Mounting Holes	216*160mm (4-Φ11mm)		184*130mm (4-Φ11mm)		198*195mm (4-Φ14mm)		230*200mm (4-Φ14mm)	
Installation Method	Hoisting							

Model	TR01-370B	TR03-610B	TR06-720B	TR07-910B	TR07-960B/EC	TR10-1110B	TR06-1410B	TR10-1450B/ARC	TR12-1410B	TR06-2070B/ARC	TR20-臂长B	TR30-1720B	TR30-1920B	TR负载-2110B	TR50-2440B	TR210-2700B	TR155-3200B	TR12-1430P	TR30-1840P	TR180-3200P	
*Original Model	TKB1010	TRB050	TKB060	TKB070	TKB1210	TKB1100	TKB1400	TKB1440	TKB1600	TKB2030	TKB2670/2690	TKB3670	TKB3690	TKB5600/5700	TKB5800	RRB6700	RRB6600	TKB4600	TKB460	TKB660	
Rated Payload	1kg	3kg	6kg	7kg	7kg	10kg	6kg	10kg	12kg	6kg	20kg	30kg	30kg	60/70kg	50kg	210kg	155kg	12kg	30kg	180kg	
Arm Reach	370mm	616mm	720mm	910mm	960mm	1110mm	1412mm	1455mm	1410mm	2078mm	1721/1920mm	1721mm	1920mm	2119mm	2448mm	2700mm	3200mm	1435mm	1840mm	3200mm	
Position Repeatability	±0.01mm	±0.02mm	±0.02mm	±0.02mm	±0.04mm	±0.03mm	±0.05mm	±0.05mm	±0.06mm	±0.07mm	±0.05mm	±0.05mm	±0.05mm	±0.08mm	±0.08mm	±0.1mm	±0.1mm	±0.08mm	±0.08mm	±0.1mm	
Protection Level	IP54	IP54	IP54/IP67 (5&6 Axes Optional)	IP54/IP67	IP54/IP67 (5&6 Axes Optional)	IP54	IP54/IP67 (5&6 Axes Optional)	IP54	IP54/IP67 (5&6 Axes Optional)	IP54	IP54/IP67 (5&6 Axes Optional)	IP54/IP67 (5&6 Axes Optional)	IP54/IP67 (5&6 Axes Optional)	IP54	IP54	IP54/IP65 (5&6 Axes Optional)	IP54/IP65 (5&6 Axes Optional)	IP54	IP54	IP54/IP65 (4 Axes Optional)	
Structural Form	Vertical Multi-jointed Series Structure										Vertical Multi-jointed Series Structure					Vertical Multi-jointed Series Structure					
DOF	6	6	6	6	6	6	6	6	6	6	6	6	6	6	6	6	6	4	4	4	
Max Speed	J1	320°/s	450°/s	450°/s	450°/s	450°/s	360°/s	198°/s	198°/s	148°/s	168°/s	186°/s	186°/s	127°/s	127°/s	114°/s	110°/s	210°/s	200°/s	105°/s	
	J2	320°/s	450°/s	450°/s	450°/s	450°/s	300°/s	198°/s	198°/s	148°/s	148°/s	186°/s	170°/s	170°/s	105°/s	105°/s	83°/s	83°/s	205°/s	175°/s	
	J3	375°/s	720°/s	450°/s	450°/s	450°/s	300°/s	169°/s	210°/s	230°/s	160°/s	200°/s	200°/s	165°/s	150°/s	95°/s	95°/s	185°/s	175°/s	129.5°/s	
	J4	500°/s	720°/s	458°/s	458°/s	458°/s	520°/s	360°/s	330°/s	480°/s	330°/s	452°/s	452°/s	253°/s	180°/s	150°/s	500°/s	360°/s	270°/s	270°/s	
	J5	470°/s	720°/s	540°/s	720°/s	720°/s	360°/s	360°/s	450°/s	256°/s	400°/s	330°/s	330°/s	250°/s	250°/s	165°/s	150°/s	/	/	/	
	J6	500°/s	720°/s	360°/s	720°/s	720°/s	450°/s	600°/s	700°/s	450°/s	700°/s	555°/s	450°/s	372°/s	372°/s	219°/s	200°/s	/	/	/	
Max Operation Area	J1	±170°	±170°	±165°	±170°	±170°	±170°	±170°	±170°	±160°	±160°	±160°	±160°	±170°	±170°	±185°	±185°	±175°	±175°	±185°	
	J2	-80°~120°	-80°~120°	-75°~110°	-75°~110°	-70°~135°	-75°~100°	-92°~153°	-92°~153°	-90°~150°	-90°~150°	-80°~150°	-80°~150°	-90°~135°	-90°~135°	-50°~85°	-40°~85°	-35°~85°	-35°~85°	-42°~85°	
	J3	-180°~50°	-75°~75°	-100°~55°	-120°~50°	-75°~75°	-120°~50°	-100°~80°	-100°~75°	-100°~80°	-100°~75°	-100°~80°	-100°~80°	-185°~90°	-185°~90°	-180°~70°	-180°~75°	-90°~70°	-90°~70°	-20°~110°	
	J4	±170°	±120°	±160°	±160°	±160°	±140°	±190°	±140°	±140°	±150°	±150°	±150°	±200°	±200°	±360°	±360°	±360°	±360°	±360°	
	J5	±125°	±120°	±110°	±120°	±120°	±120°	±110°	±130°	±110°	±125°	±110°	±125°	±105°	±125°	/	/	/	/	/	
	J6	±360°	±360°	±360°	±360°	±360°	±360°	±360°	±360°	±360°	±360°	±360°	±360°	±360°	±360°	±360°	±360°	/	/	/	
Wrist Allowable Torque	J4	3.33Nm	7.38Nm	12.5Nm	16.7Nm	16.7Nm	21Nm	16.7Nm	20Nm	23Nm	42Nm	62Nm	62Nm	206Nm/330Nm	206Nm	1360Nm	1000Nm	/	/	/	
	J5	3.33Nm	7.38Nm	12.5Nm	16.7Nm	16.7Nm	21Nm	16.7Nm	20Nm	23Nm	42Nm	62Nm	62Nm	206Nm/330Nm	206Nm	1360Nm	1000Nm	/	/	/	
	J6	0.98Nm	4.45Nm	7.6Nm	9.6Nm	9.6Nm	10Nm	9.6Nm	11Nm	9.3Nm	11Nm	26Nm	35Nm	127Nm/165Nm	127Nm	735Nm	600Nm	/	/	/	
Maximum Allowable Inertia of the Wrist	J4	0.058kgm <sup>2</sup>	0.2kgm <sup>2</sup>	0.35kgm <sup>2</sup>	0.49kgm <sup>2</sup>	0.49kgm <sup>2</sup>	0.5kgm <sup>2</sup>	0.49kgm <sup>2</sup>	0.5kgm <sup>2</sup>	0.63kgm <sup>2</sup>	1.18kgm <sup>2</sup>	1.5kgm <sup>2</sup>	1.5kgm <sup>2</sup>	28kgm <sup>2</sup> /30kgm <sup>2</sup>	28kgm <sup>2</sup>	147kgm <sup>2</sup>	89kgm <sup>2</sup>	1.3kgm <sup>2</sup>	1.5kgm <sup>2</sup>	82.3kgm <sup>2</sup>	
	J5	0.058kgm <sup>2</sup>	0.2kgm <sup>2</sup>	0.35kgm <sup>2</sup>	0.49kgm <sup>2</sup>	0.49kgm <sup>2</sup>	0.5kgm <sup>2</sup>	0.49kgm <sup>2</sup>	0.5kgm <sup>2</sup>	0.63kgm <sup>2</sup>	1.18kgm <sup>2</sup>	1.5kgm <sup>2</sup>	1.5kgm <sup>2</sup>	28kgm <sup>2</sup> /30kgm <sup>2</sup>	28kgm <sup>2</sup>	147kgm <sup>2</sup>	89kgm <sup>2</sup>	/	/	/	
	J6	0.005kgm <sup>2</sup>	0.067kgm <sup>2</sup>	0.13kgm <sup>2</sup>	0.16kgm <sup>2</sup>	0.16kgm <sup>2</sup>	0.5=2kgm <sup>2</sup>	0.16kgm <sup>2</sup>	0.16kgm <sup>2</sup>	0.17kgm <sup>2</sup>	0.16kgm <sup>2</sup>	0.8kgm <sup>2</sup>	0.7kgm <sup>2</sup>	11kgm <sup>2</sup> /16.8kgm <sup>2</sup>	11kgm <sup>2</sup>	82kgm <sup>2</sup>	49kgm <sup>2</sup>	/	/	/	
Rated Power	0.4kw	1.05kw	2.2kw	2.4kw	2.4kw	2.5kw	3.5kw	4.3kw	4.3kw	4.3kw	4.5kw/4.7kw	5kw	5.2kw	6.5kw/6.8kw	7kw	8.5kw	7.5kw	2.5kw	4.2kw	5.5kw	
User Wiring	RVV10*0.08	RVV10*0.2	RVV10*0.2	RVV10*0.2	RVV10*0.2	RVV10*0.2	RVV10*0.2	RVV10*0.2	RVV10*0.2	RVV10*0.2	RVV10*0.2	RVV10*0.2	RVV10*0.2	RVV10*0.2	RVV10*0.2	RVV10*0.2	RVV5*6	RVV5*6	RVV17*0.2	RVV16*0.2	RVV5*6
User Piping	2*Φ4mm	2*Φ4mm	2*Φ6mm	2*Φ6mm	2*Φ6mm	2*Φ6mm	1*Φ8mm	1*Φ8mm	2*Φ8mm	1*Φ8mm	2*Φ8mm	2*Φ8mm	2*Φ8mm	2*Φ8mm	2*Φ8mm	2*Φ8mm	2*Φ8mm	2*Φ8mm	2*Φ8mm	2*Φ8mm	
User Distribution	single-phase AC220V -10%~+10%															three phase AC380V -10%~+10%					
Applicable Environment	Temperature	0-45° C										0-45° C					0-45° C				
	Humidity	10%-80%RH										10%-80%RH					10%-80%RH				
	Max Temperature Gradient	1.5° C/min										1.5° C/min					1.5° C/min				
Body Weight	15kg	35kg	40kg	50kg	49kg	55kg	160kg	155kg	160kg	210kg	210/220kg	220kg	220kg	600kg	650kg	1300kg	1320kg	175kg	240kg	1193kg	
Control Cabinet	TRC4-A03	TRC4-A03	TRC4-A03	TRC4-A03	TRC4-A03	TRC4-A03	TRC5-B06	TRC5-B06	TRC5-B06	TRC5-B06	TRC5-B06	TRC5-B06	TRC5-B06	TRC3-C06	TRC3-C06	TRC3-D06	TRC3-D06	TRC5-B06/ TRC3-D06	TRC5-B06/ TRC3-D06	TRC3-D06	
Installation Method	Floor-standing															Floor-standing					