

Get your white label  
program started today!

[sales@agstech.net](mailto:sales@agstech.net)



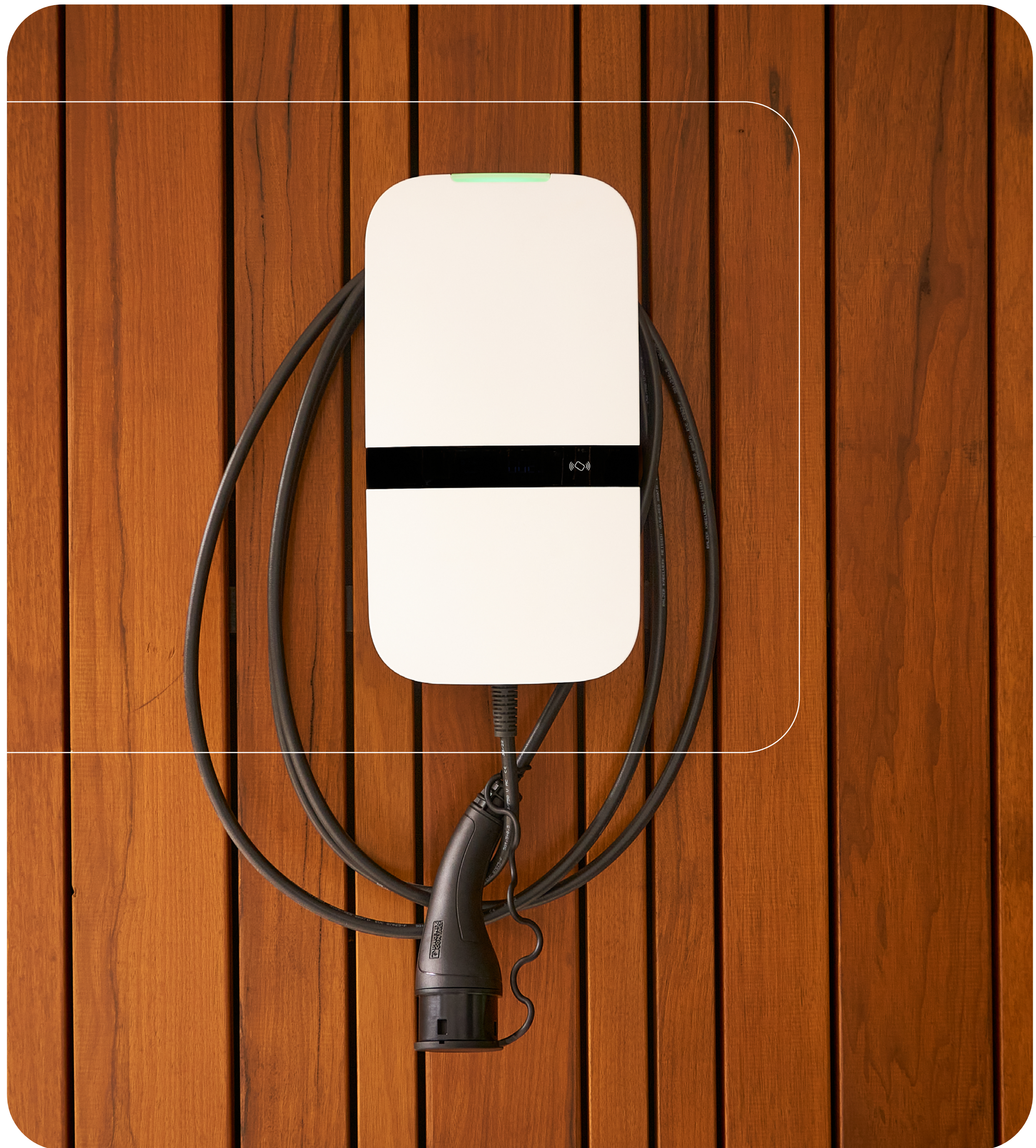
AGS-TECH, Inc.  
Phone: +1-505-550-6501 and +1-505-565-5102  
Fax: +1-505-814-5778  
Email: [sales@agstech.net](mailto:sales@agstech.net)  
Web: <http://www.agstech.net>

## Unleash the Power: Introducing White Label EV Chargers

Information Leaflet







## Ready for the Future

As life gets more complex, tech should get easier. That's why we build EV chargers that are robust, easy to use and future-ready. Backed by a parent company, the manufacturing plant has everything in-house to fuel your future.

These chargers all come with the same robustness, ease of use and security. They're ready for the future of connectivity and can be installed by an installer in under 30 minutes.

Designed, tested, and produced at a fully vertically integrated site in The Netherlands.



### Aesthetic Design

Made to accessorise and fit in with your exterior



### Rocksolid Build

Only a limited amount of cables and elements



### Safe & Secure

Following the highest market standards



### Quick Installation

Set up by an installer in less than 30 minutes



### Built to Last

They are robust and hard to break



### Fully Customisable

To match your brand and meet your requirements



# Detailed Specification List

## General

Charger type	IEC 61851-1 AC mode 3
EV plug connection	IEC 62196 Type 2 cable IEC 62196 Type 2 shutter socket
Rated (output) current	16 A 32 A
Rated voltage	230 V AC (1-phase) 400 V AC (3-phase)
Maximum power	3.7 kW / 11kW 7.4 kW / 22 kW
Idle use	2.7W
Rated frequency	50 Hz
Dimensions (H x W x D, excl. cable)	387 x 207 x 128 mm
Weight (excl. cable)	Approx. 2.9 kg
Charging cable length	5m, 6m or 7.5m
User interface	Multicolor LED, buzzer, display, web interface
Intended use	Residential, commercial, and industrial applications





## Safety

Current leakage	6 mA DC earth leakage protection
Safety class	Class I
Overvoltage category	Category III PEN fault detection (UK only) Tampering detection (UK only)

## Authorisation

Authorisation methods	RFID (Mifare classic & Mifare DESfire) NFC None
ISO 15118 plug and charge	Business only*

## Environmental

Operating temperature	-30 °C to +50 °C
Ambient storage temperature	-40 °C to +85 °C
Relative humidity range	5% to 95%
Maximum operating altitude	3000 m
IP rating	IP54
IK rating	IK10

## Installation

Installation location	Indoor and outdoor usage
Main connection	Permanent mains connection only
Installation type	Stationary equipment. Wall or pole surface mounted

## Connectivity

\* Available in the future via an over-the-air software update

WLAN	2.4 GHz with WPA2
Fixed network	Ethernet 100 Mbit
Cellular	LTE Cat-M1, NB-IoT, GPRS
SIM size	Nano-SIM (4FF)

## Supported Protocols

Vehicle communication	IEC 61851-1	ISO 15118* (Business)
Back-end communication	OCPP 1.6-J	OCPP 2.0.1*
Firmware update	Locally via web interface	Over-the-air via OCPP

## Charging Strategies

Scheduled charging	Over-the-air via OCPP 1.6-J	Locally via Web interface, Modbus / REST API
Dynamic load balancing	Hardwired via CTs Local with HomeWizard P1 dongle	Hardwired via Modbus RTU meter* Hardwired via Modbus TCP meter (selected types)
Group load balancing	RS-485 (leader or follower)	Ethernet*
Solar charging	Local with HomeWizard P1 Meter	Hardwired via Modbus TCP meter (selected types)
Power limitation	Current slider Household power slider*	Local control via Modbus/ REST API*

## Energy Meter

Energy meter class	Class B
Certification	MID certified Eichrecht module B / D certified, optional (Business)





## White Label Customisation Packages

We take pride in our charger's aesthetics. Then again, you may look for something that aligns with your company brand and needs. Thanks to white label, you can tailor our charger to your preferences. It's yours, after all!

All of these chargers can be customised to your liking by choosing your preferred design and features. Create your custom charger in three easy steps.

Good to know: customisation options come with a minimum order quantity.



## STEP 1

# Choose Your Base Product



Features	Home Basic	Home Connected	Home Premium	Business
Number of phases	1 phase / 3 phase	1 phase / 3 phase	1 phase / 3 phase	1 phase / 3 phase
Maximum power	3.7 kW / 11 kW	3.7 kW / 11 kW	7.4 kW / 22 kW	7.4 kW / 22 kW
Port type	Fixed cable 5m / 6m / 7.5m	Fixed cable 5m / 6m / 7.5m	Fixed cable 5m / 6m / 7.5m	Fixed cable / Socket / Shutter
Dynamic load balancing	✓	✓	✓	✓
Group load balancing	✓	✓	✓	✓
Display	✓	✓	✓	✓
Backoffice connectivity (OCPP 1.6-J)	Ethernet, WiFi	Ethernet, WiFi, mobile network (2G/4G)	Ethernet, WiFi, mobile network (2G/4G)	Ethernet, WiFi, mobile network (2G/4G)
Energy meter	Indicative	MID	MID	MID/Eichrecht (optional)
Solar charging	✓	✓	✓	✓
ISO 15118 plug & charge ready	-	-	-	✓
ISO 15118 bidirectional charging ready	-	-	-	✓
Single phase 7.4kW PEN-fault protection	Optional	Optional	Optional	Optional



## STEP 2

# Choose Your Customization Package



Standard



Core



Advanced

Features	Standard	Core	Advanced
Cover colour	Basalt grey	Signal white	Signal white
Custom logo (PAD print) on the covers	-	✓	✓
Product packaging	Manufacturer	Neutral - no branding	Neutral - no branding
Custom service hub (online) branding	Manufacturer	✓	✓
Custom web interface branding	Manufacturer		✓
Custom quick installation guide branding	Manufacturer	✓	✓
Custom full installation manual (online) branding	Manufacturer	✓	✓
Charger ID	PBLR-xxxx	PBLR-xxxx	CustomID-xxxx
Back office	Manufacturer supported*	Manufacturer supported*	Free of choice
Pre-configured software settings	Manufacturer default	Manufacturer default	✓
Reporting to safely transport passwords	-	✓	✓
SIM card placement in production	-	-	✓

\* Manufacturer support various numbers of back offices. See the list of supported back offices on our website.



## STEP 3

# Choose Any Optional Extras

### Available colours



Signal white



Graphite black



Half & half



Custom colours



### Custom packaging design

Including logo or other branding elements



### Custom laser etchings

Including QR codes or branding elements



### Your contents in the packaging

Load balancing kit, custom RFID tag, external





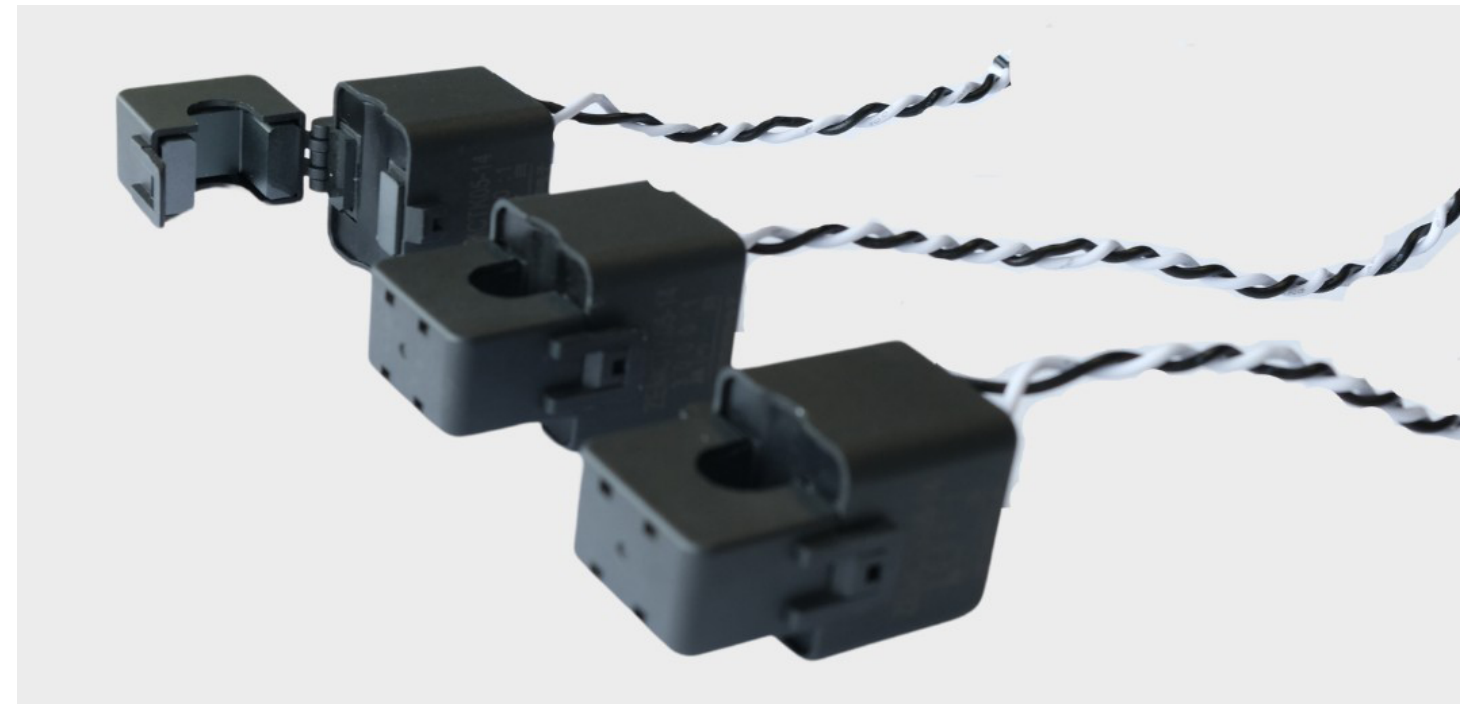
# A Look Under the Hood

When designing our EV charger, we didn't choose between safety, robustness and aesthetics.  
We wanted you to have it all.





## Charger Accessories



### Load Balancing Kit

Our load balancing kit (also known as CT coils) is a hardware add-on that prevents a blackout by ensuring that you don't exceed the maximum current available in your household. The kit works throughout Europe.



### Single Pole

Mounting options:

- Floor
- Ground

We offer rock-solid single poles that are easy to install. Hard to break; easy on the eyes. Choose between floor and ground mounting options, designed to the surface hardness, whether it be concrete or earth.



### Dual Pole

Mounting options:

- Floor
- Ground

Our dual pole allows you to simultaneously charge two electric vehicles from a single charging pole. Choose between floor and ground mounting options, designed to the surface hardness, whether it be concrete or earth.



## Technology Partners

Supported sources for load balancing and solar charging



### HomeWizard P1 Dongle

We support load balancing through HomeWizard. They provide a platform to monitor the energy usage of your household. HomeWizard helps you to improve energy management and reduce costs as a result.

\* DSMR 4 or 5 required, older smart meters are not supported. [Click here](#) to check if your smart meter is compatible.



### Phoenix Contact EMPro

The multifunctional EMpro energy measuring devices acquire your energy data and offer numerous options for communicating the data to higher-level control and management systems. EMPro is a measurement source for blackout protection, which is especially useful for group load balancing applications.



### Xemex Smart Charge Controller

The Smart Charge Controller (SCC) is an electronic device which is used in conjunction with an EV charging station. It measures the grid current and communicates the available current to the charger, based on chosen charging strategy. This meter informs the charger about setpoints for maximum charging current at certain moments in time.





pblr-12345678.local

# Customise Charging Preferences with the Web Interface

With the web interface of manufacturer, you have convenient local control over your charger. Simply connect to the charger via Ethernet or WiFi using your device (phone, laptop or tablet) that shares the same local network. Access the following practical functionalities within the web app:



Monitor real time &  
historical charging sessions



Adjust LED preferences  
and sound settings



Manage authorisation settings /  
RFID tags (for unmanaged boxes)



Set personalised  
charging schedules



Choose your solar  
charging method



Set up network  
configurations



Download and install  
software updates



Diagnostics for  
remote support



**Get your white label  
program started today!**

**sales@agstech.net**



**AGS-TECH, Inc.**  
**Phone: +1-505-550-6501 and +1-505-565-5102**  
**Fax: +1-505-814-5778**  
**Email: sales@agstech.net**  
**Web: <http://www.agstech.net>**

THE INFORMATION IN THIS DOCUMENT IS FOR MARKETING PURPOSES ONLY, IS PROVIDED AS IS, AND MAY BE SUBJECTED TO CHANGE WITHOUT NOTICE.

While reasonable efforts are undertaken to ensure that this information is correct, we cannot guarantee that the information provided is completely free from inaccuracies. We are not liable for possible inaccuracies or completeness of information. The full product and warranty conditions are set out in the General Terms and Conditions.

All product names, trademarks, and slogans, whether registered or not, remains as intellectual property and may not be used without our prior written permission. The listing of name, logo or product of any third party is not intended to imply any endorsement or direct affiliation with us and is purely for demonstrational purposes, unless otherwise stipulated.

