

# 37 Plastic equipment case



- Case body moulded in high-impact ABS, also, Custom popular ABS available.
- Better airtight ,waterproof and Anti-corrosion performance,protect your instrument even under the adverse environment.
- Custom the free compartment very convenient due to the foam pre-cutted grip.
- Have a knob with o-ring for manual pressure adjustment.
- Latch of change is a single plastic component, It wont get lost even under higher impact.
- Have a recessed area for a label in the top of cover and in the bottom of body.
- With a bezel kit available, the bezel kit must be ordered separately.

## Products

37-1



37-1 Int. dim. : 253 × 183.2 × 84.3  
 Ext. dim. : 276.5 × 227.5 × 98.5  
 Pkg. dim. : 285 × 235 × 105

Weight : (empty)0.9kg  
 (with foam)1kg

Colors : 033-Black, 031-Orange, 032-Sapphire, 036-Tpt. white, 037-Tpt. blue

37-1-1

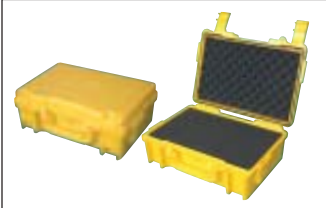


37-1-1 Int. dim. : 253 × 183 × 138  
 Ext. dim. : 277.2 × 227.5 × 153  
 Pkg. dim. : 285 × 235 × 160

Weight : (empty)1.15kg  
 (with foam)1.45kg

Colors : 033-Black, 031-Orange, 032-Sapphire, 036-Tpt. white, 037-Tpt. blue

37-2



37-2 Int. dim. : 335 × 205.5 × 122  
 Ext. dim. : 372 × 266.5 × 134.5  
 Pkg. dim. : 375 × 145 × 280

Weight : (empty)1.9kg  
 (with foam)2.4kg

Colors : 033-Black, 031-Orange, 032-Sapphire, 035-Olive drab, 030-Yellow

### 37 Plastic equipment case

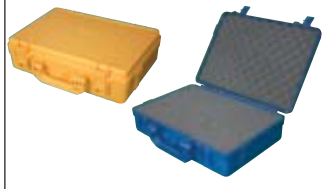
37-2-1



37-2-1 Int. dim. : 335 × 205.5 × 95  
 Ext. dim. : 372 × 266.5 × 105  
 Pkg. dim. : 375 × 280 × 110

Colors : 033-Black, 031-Orange, 032-Sapphire, 035-Olive drab, 030-Yellow

37-3



37-3 Int. dim. : 367.2 × 246.7 × 87                      Weight : (empty)1.5kg  
 Ext. dim. : 387 × 289 × 104    (with foam)1.8kg  
 Pkg. dim. : 390 × 290 × 110

Colors : 033-Black, 031-Orange, 032-Sapphire, 035-Olive drab

37-4



37-4 Int. dim. : 386.5 × 266.5 × 153.5                      Weight : (empty)2kg  
 Ext. dim. : 415 × 319 × 168    (with foam)2.6kg  
 Pkg. dim.: 420 × 320 × 175

Colors : 033-Black, 031-Orange, 032-Sapphire, 035-Olive drab

37-5



37-5 Int. dim. : 414.5 × 290 × 120                      Weight : (empty)2.6kg  
 Ext. dim.: 456 × 355 × 133    (with foam)3.1kg  
 Pkg. dim.: 460 × 360 × 140

Colors : 033-Black, 031-Orange, 032-Sapphire, 035-Olive drab

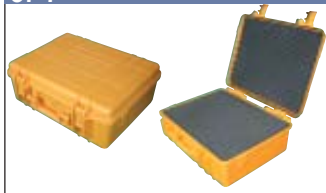
37-6



37-6 Int. dim. : 421 × 292.5 × 170.5                      Weight : (empty)3kg  
 Ext. dim. : 456 × 372 × 185    (with foam)3.7kg  
 Pkg. dim.: 460 × 375 × 190

Colors : 033-Black, 031-Orange, 032-Sapphire, 035-Olive drab

37-7



37-7 Int. dim. : 477.5 × 357 × 176                      Weight : (empty)4.6kg  
 Ext. dim. : 515.5 × 434.5 × 199    (with foam)5.2kg  
 Pkg. dim.: 520 × 440 × 205

Colors : 033-Black, 031-Orange, 032-Sapphire, 035-Olive drab

37-8



37-8 Int. dim. : 590 × 400 × 210  
 Ext. dim. : 600 × 430 × 230

Colors : 033-Black, 031-Orange



37-9



37-9 Int. dim. : 680 × 430 × 220                      Weight : (empty)8.8kg  
 Ext. dim. : 720 × 470 × 260    (with foam)10.7kg  
 Pkg. dim.: 765 × 520 × 270

Colors : 033-Black, 031-Orange

## 37 Plastic equipment case

<p><b>37-10</b></p> 	<p>37-10 Int. dim. :205 × 145 × 79 Ext. dim. :225 × 180 × 85</p> <p>Colors : 033-Black, 031-Orange, 032-Sapphire, 034-Shamrock</p>
<p><b>37-11</b></p> 	<p>37-11 Int. dim. : 420 × 303 × 296      Weight : (empty)4kg Ext. dim.: 455 × 370 × 315      (with foam)5.2kg Pkg. dim. :460 × 375 × 320</p> <p>Colors : 033-Black, 031-Orange, 032-Sapphire, 035-Olive drab</p>
<p><b>37-12</b></p> 	<p>37-12 Int. dim.: 337 × 212 × 156      Weight : (empty)1.6kg Ext. dim. : 365 × 269.5 × 169      (with foam)2.1kg Pkg. dim. :370 × 275 × 180</p> <p>Colors : 033-Black, 031-Orange, 032-Sapphire, 035-Olive drab</p>
<p><b>37-13</b></p> 	<p>37-13 Int. dim. : 188 × 124 × 75      Weight : (empty)0.6kg Ext. dim.: 210 × 166 × 90      (with foam)0.7kg Pkg. dim. :225 × 185 × 105</p> <p>Colors : 033-Black, 031-Orange, 032-Sapphire, 035-Olive drab</p>
<p><b>37-14</b></p>  <p>(开发中)</p>	<p>37-14 Ext. dim. : 600 × 500 × 350 Colors : 033-Black, 031-Orange</p>
<p><b>37C-1</b></p> 	<p>37C-1 Ext. dim. : 430x380x230 Colors : 033-Black, 031-Orange, 032-Sapphire, 034-Shamrock, 037-Tpt. blue</p>
<p><b>37D-1</b></p> 	<p>37D-1 Ext. dim. : 267 × 198 × 76 Colors : 033-Black, 031-Orange, 032-Sapphire, 034-Shamrock, 037-Tpt. blue</p> <p>Note : not suitable for waterproof environment</p>
<p><b>37D-2</b></p> 	<p>37D-2 Ext. dim. : 325 × 277 × 201 Colors : 033-Black, 031-Orange, 032-Sapphire, 034-Shamrock, 037-Tpt. blue</p> <p>Note : not suitable for waterproof environment</p>

## 37 Plastic equipment case

37E



Coming soon

37F-1



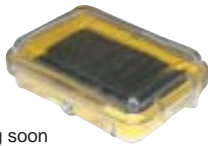
Coming soon

37F-1 Int. dim. : 111 × 73 × 43

Ext. dim. : 138 × 103 × 54

Colors : 033-Black, 031-Orange, 032-Sapphire, 034-Shamrock, 037-Tpt. blue

37F-2



Coming soon

37F-2 Int. dim. : 135 × 90 × 43

Ext. dim.: 162 × 121 × 54

Colors : 033-Black, 031-Orange, 032-Sapphire, 034-Shamrock, 037-Tpt. blue

37F-3



Coming soon

37F-3 Int. dim. : 162 × 67 × 52

Ext. dim. : 190 × 98 × 62

Colors : 033-Black, 031-Orange, 032-Sapphire, 034-Shamrock, 037-Tpt. blue

37F-4



Coming soon

37F-4 Int. dim. : 209 × 108 × 57

Ext. dim. : 238 × 141 × 67

Colors : 033-Black, 031-Orange, 032-Sapphire, 034-Shamrock, 037-Tpt. blue

37F-5



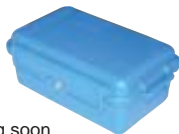
Coming soon

37F-5 Int. dim. : 165 × 98 × 44

Ext. dim. : 190 × 128 × 54

Colors : 033-Black, 031-Orange, 032-Sapphire, 034-Shamrock, 037-Tpt. blue

37F-6



Coming soon

37F-6 Int. dim. : 160 × 93 × 70

Ext. dim.: 190 × 128 × 79

Colors : 033-Black, 031-Orange, 032-Sapphire, 034-Shamrock, 037-Tpt. blue

## Features



Against pressure



Airtight and watertight



Low temperature resistant



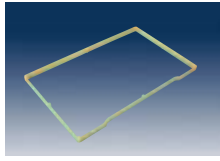
Auto-adjusting pressure



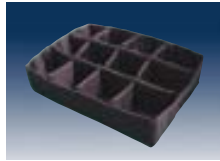
Easy-mounting kit



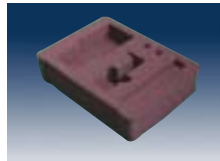
### Optional accessories



Bezel kit



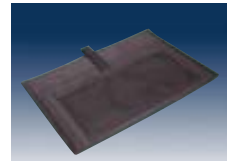
Pad divider



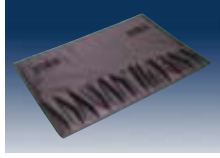
Customized foam



Shoulder strap



Folder



Tool clamp



Backpack carrying system



Boss for mounting bezel kit



Pressure release valve



Hole for special lock

### Applications

